



Crime Contracts Consultative Group (CCCG)

Volume and Value figures report

November 2011

Table of Contents

Investigations	3
Investigations claims by month	4
Criminal Defence Service (CDS) Direct	5
Magistrates' Courts Means Assessment Test -MAAT Figures	6
Proceedings	7
Proceedings claims by month	8
Prison Law	11
Prison Law by month and claim code	14
Total lower crime	15
Investigations claims by scheme	17

Investigations

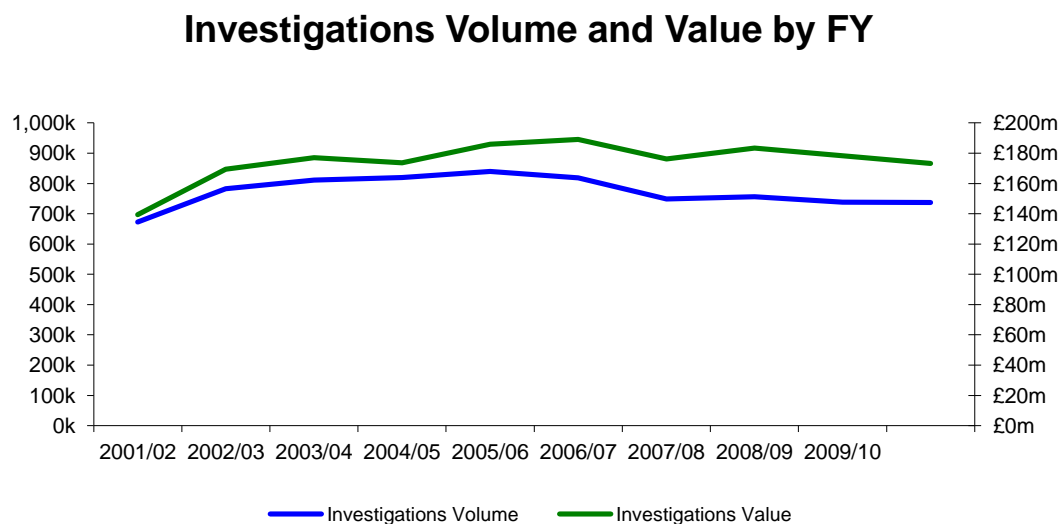
The table below provides a summary of volume and claim value of investigations claims for the period 2001/02 to 2010/11. It also provides a year on year percentage change in the figures. The Investigations volume and value include all police station claim codes.

Investigations volume and value flat in Mar 2010/11, data shows trend in period going forward to be steady.

Figure 1: Volume and Value of Investigations Claims 2001/02 to 2010/11

Year	Investigations Volume	% Change	Investigations Value	% Change
2001/02	672,904		£ 139,378,063	
2002/03	782,622	16%	£ 169,456,018	22%
2003/04	811,540	4%	£ 177,127,395	5%
2004/05	819,479	1%	£ 173,703,404	-2%
2005/06	839,829	2%	£ 185,952,559	7%
2006/07	818,330	-3%	£ 189,118,848	2%
2007/08	749,155	-8%	£ 176,146,439	-7%
2008/09	756,101	1%	£ 183,322,623	4%
2009/10	737,815	-2%	£ 178,232,330	-3%
2010/11	737,618	-0.03%	£ 173,217,335	-3%

Figure 2: Volume and Value of Investigations Claims 2001/02 to 2010/11



Investigations claims by month

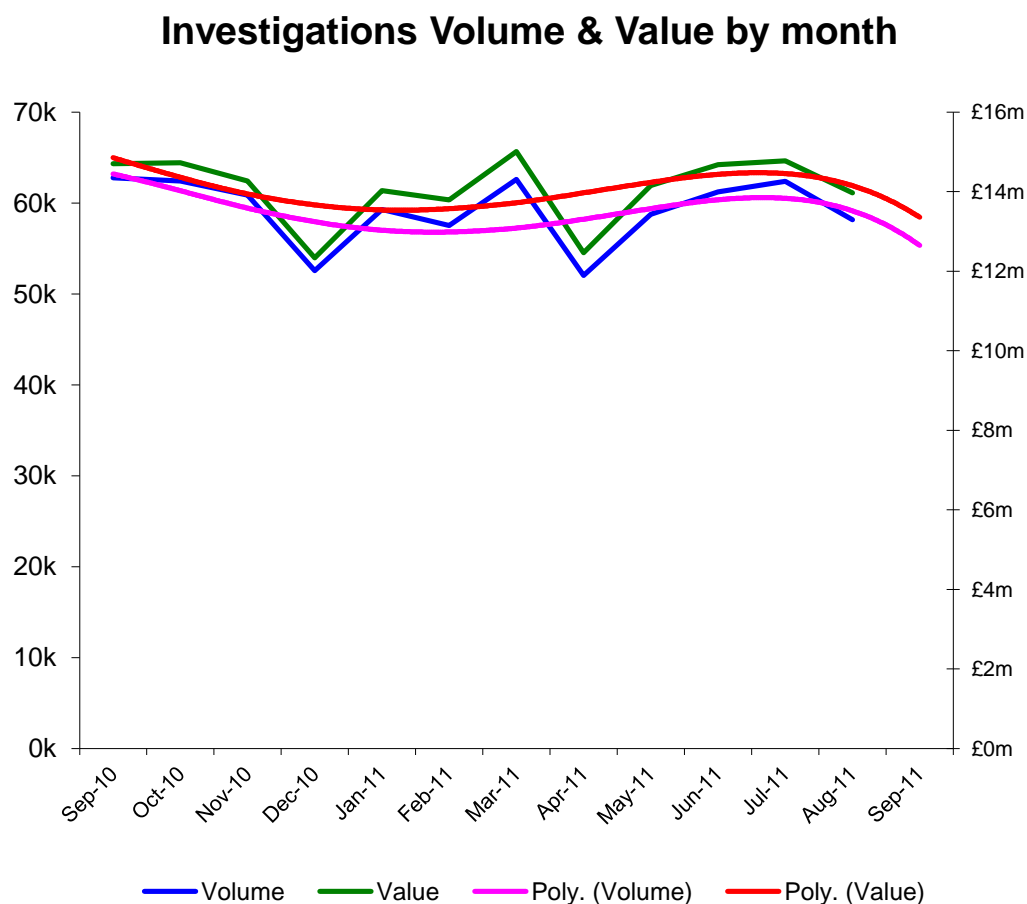
The table below provides a monthly summary of investigations claims volume and value for the period September 2010 to August 2011. It also shows the percentage change in comparison to the same month in the previous year. The Investigations by month volume and value include all police station claim codes.

Volume and value showed a big drop in April 2011 with a steady upward trend for the next three months and a drop in August 2011

Figure 3: Volume and Value of Investigations Claims by month

Month	Volume	Volume Previous Year	% Change	Value	Value Previous Year	% Change
Sep-10	62,791	63,437	-1%	£14,700,943	£15,264,231	-4%
Oct-10	62,411	63,456	-2%	£14,728,154	£15,237,751	-3%
Nov-10	60,875	60,588	0%	£14,272,269	£14,530,813	-2%
Dec-10	52,569	55,948	-6%	£12,337,355	£13,476,996	-9%
Jan-11	59,302	61,235	-3%	£14,023,191	£14,987,739	-7%
Feb-11	57,523	58,963	-3%	£13,796,182	£14,452,476	-5%
Mar-11	62,604	62,792	-0.30%	£15,006,998	£14,987,739	0.13%
Apr-11	52,042	61,366	-17.92%	£12,464,897	£14,860,008	-19.21%
May-11	58,759	60,643	-3.21%	£14,152,552	£14,400,486	-1.75%
Jun-11	61,229	63,819	-4.23%	£14,682,813	£15,095,537	-2.81%
Jul-11	62,390	63,831	-2.31%	£14,771,857	£15,057,938	-1.94%
Aug-11	58,168	63,063	-8.42%	£13,971,483	£14,792,402	-5.88%

Figure 4: Volume and Value of Investigations Claims by month



Criminal Defence Service (CDS) Direct

The tables below provide a monthly summary of CDS Direct cases volume and value for the financial years 2009/10 and 2010/11 and for the period April 2011 to September 2011.

Figure 5: Volume and Value of CDS Direct Cases by month in FY 2009/10

Month	Cases	Cost
Apr-09	10,380	£228,793.85
May-09	10,944	£241,263.68
Jun-09	10,712	£235,963.16
Jul-09	11,195	£253,835.27
Aug-09	10,929	£240,957.10
Sep-09	10,484	£230,800.77
Oct-09	11,217	£246,651.04
Nov-09	10,580	£241,229.36
Dec-09	10,040	£221,484.07
Jan-10	10,421	£229,311.80

Feb-10	9,600	£210,533.97
Mar-10	10,466	£240,378.74
Totals	126,968	2,821,202.81

Figure 6: Volume and Value of CDS Direct Cases by month in FY 2010/11

Month	Cases	Cost
Apr-10	10,964	£240,132.40
May-10	10,465	£230,351.90
Jun-10	10,306	£225,912.69
Jul-10	11,206	£246,550.28
Aug-10	10,658	£243,133.06
Sep-10	10,462	£230,231.20
Oct-10	10,491	£231,320.79
Nov-10	10,079	£221,480.17
Dec-10	9,411	£213,569.45
Jan-11	10,408	£235,411.65
Feb-11	9,368	£205,410.75
Mar-11	9,922	£221,275.87
Totals	124,023	£2,743,770.21

Figure 7: Volume and Value of CDS Direct Cases by month for the period April 2011 to September 2011

Month	Cases	Cost
Apr-11	9,795	£214,900.01
May-11	10,074	£233,187.60
Jun-11	10,144	£224,589.52
Jul-11	10,577	£240,498.24
Aug-11	10,142	£232,037.05
Sep-11	10,077	£229,028.86
Totals	60,809	£1,374,241.28

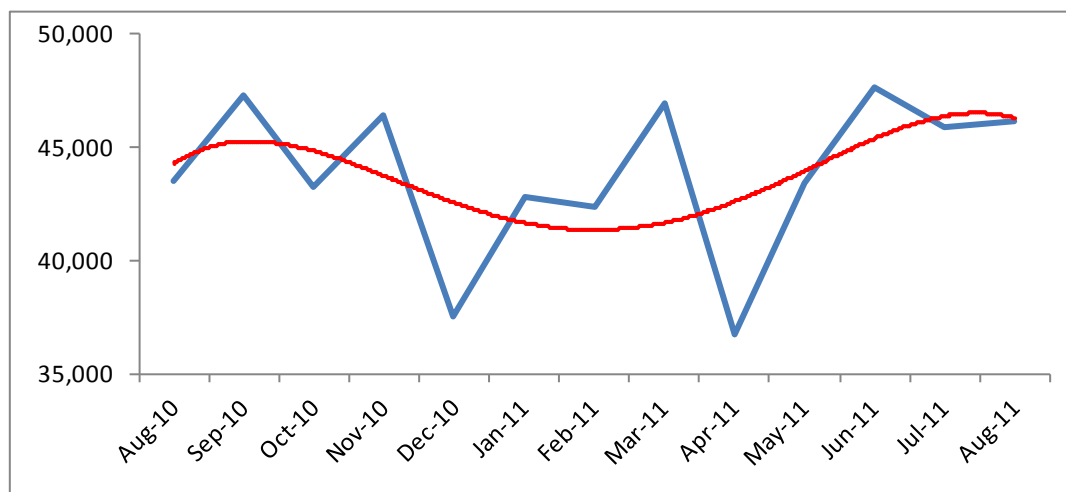
Magistrates' Courts Means Assessment Test -MAAT Figures

The table below provides a summary of the Magistrates' Courts Means Test Performance Report. It also provides a month by month percentage change in the number of grants.

Figure 8: Means Assessment and Appeals Tool (MAAT) Grants by month

Month	Grants	% Change
Sep-10	47,323	9%
Oct-10	43,266	-9%
Nov-10	46,411	7%
Dec-10	37,503	-19%
Jan-11	42,823	14%
Feb-11	42,376	-1%
Mar-11	46,914	11%
Apr-11	36,774	-22%
May-11	43,422	18%
Jun-11	47,631	10%
Jul-11	45,936	-4%
Aug-11	46,191	1%

Figure 9: Means Assessment and Appeals Tool (MAAT) Grants by month



Proceedings

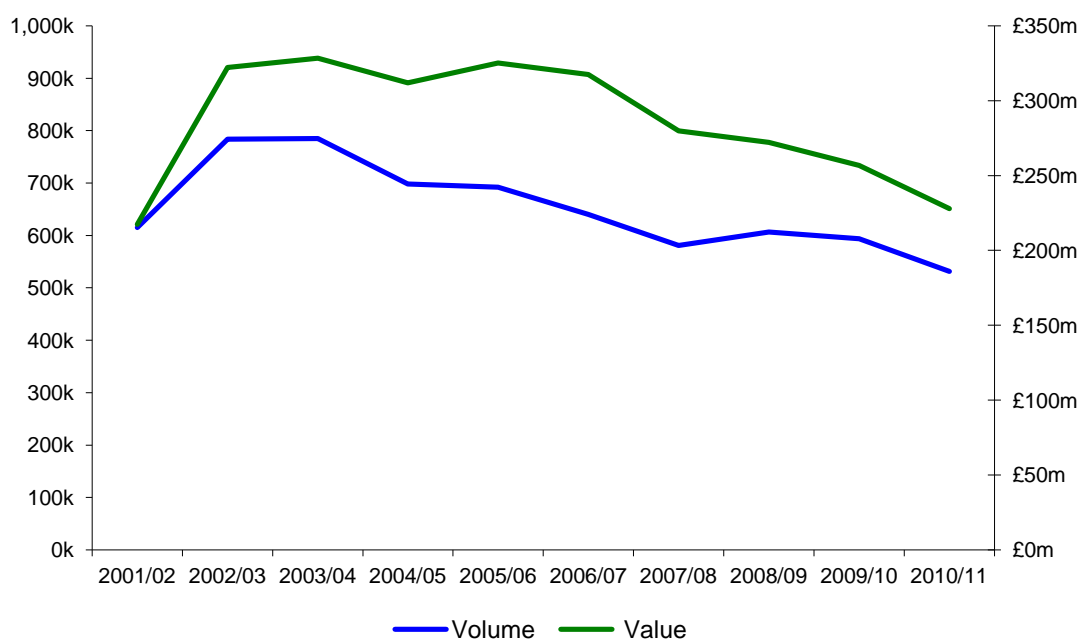
The table below provides a summary of volume and claim value of Proceedings claims for the period 2001/02 to 2010/11. It also provides a year on year percentage change in the figures. The Proceedings volume and value include all Magistrates' Court claim codes.

Volume and value dropped by 11% in 2010/11

Figure 10: Volume and Value of Proceedings Claims 2001/02 to 2010/11

Year	Proceedings Claims Volume	% Change	Proceedings Claims Value	% Change
2001/02	615,395		£217,319,875	
2002/03 ¹	783,495	27%	£322,099,577	48%
2003/04	784,911	0%	£328,352,681	2%
2004/05	697,966	-11%	£311,930,090	-5%
2005/06	692,154	-1%	£325,070,797	4%
2006/07 ²	640,130	-8%	£317,380,026	-2%
2007/08	580,649	-9%	£279,846,466	-12%
2008/09	607,524	5%	£265,257,503	-5%
2009/10	593,606	-2%	£256,662,477	-3%
2010/11	531,212	-11%	£227,847,947	-11%

Figure 11: Volume and Value of Proceedings Claims 2001/02 to 2010/11



Proceedings claims by month

The table below provides a monthly summary of Proceedings claims volume and value for the period September 2010 to August 2011. It also shows the percentage change in comparison to the same month in the previous year. The Proceedings volume and value by month include all Magistrates' Court claim codes.

¹ Means testing abolished

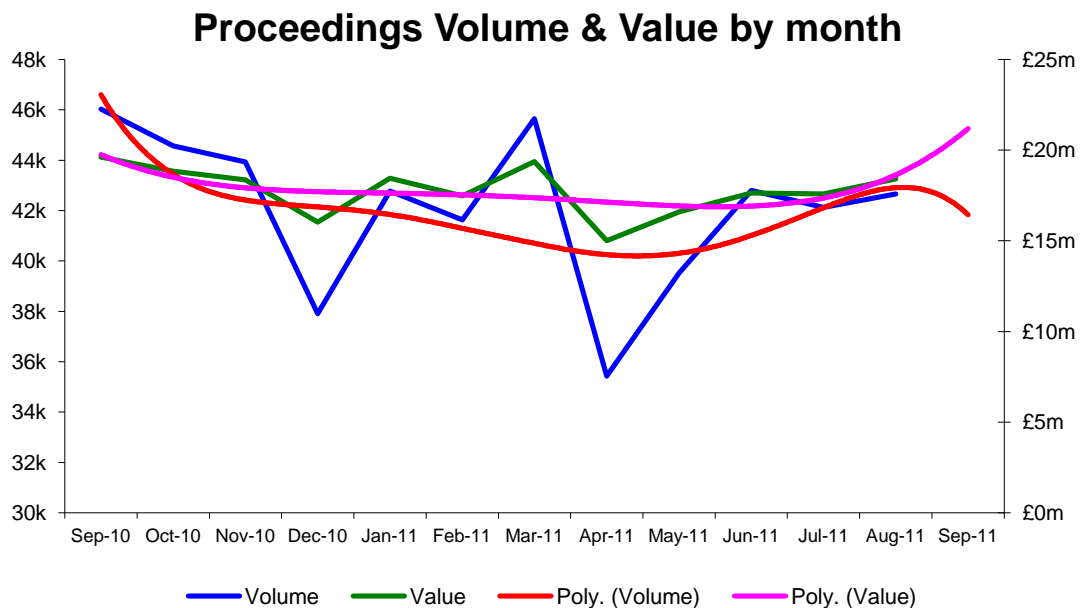
² Means testing re-introduced

*Volume and value in July 2011 significantly lower than the equivalent in 2010.
In August 2011 volume and value were comparable to those in 2010.*

Figure 12: Volume and Value of Proceedings Claims by month

Month	Volume	Volume Previous Year	% Change	Value	Value Previous Year	% Change
Sep-10	46,027	52,008	-13%	£19,622,675	£22,364,167	-14%
Oct-10	44,574	52,192	-17%	£18,844,764	£22,589,000	-20%
Nov-10	43,936	48,900	-11%	£18,358,119	£21,393,711	-17%
Dec-10	37,903	43,184	-14%	£16,034,547	£19,249,334	-20%
Jan-11	42,780	48,748	-14%	£18,451,829	£21,301,621	-15%
Feb-11	41,631	48,017	-15%	£17,481,602	£20,968,386	-20%
Mar-11	45,650	50,013	-10%	£19,370,823	£21,592,913	-11%
Apr-11	35,425	47,711	-35%	£15,008,393	£20,704,783	-38%
May-11	39,525	45,603	-15%	£16,592,870	£20,090,670	-21%
Jun-11	42,801	46,384	-8%	£17,642,272	£20,875,129	-18%
Jul-11	42,131	45,045	-7%	£17,584,693	£18,987,672	-8%
Aug-11	42,662	44,034	-3%	£18,422,858	£18,330,392	1%

Figure 13: Volume and Value of Proceedings Claims by month



Proceedings claims by month (FY 2010/11)

The table below provides a monthly summary of Proceedings claims volume and value for the period September 2010 to August 2011. It also shows the percentage change in comparison to the previous month. The Proceedings volume and value by month include all Magistrates' Court claim codes.

There was a slight drop in volume and no change in value from June to July 2011 and a small increase in August.

Figure 14: Volume and Value of Proceedings Claims by month compared to previous month

Month	Volume	% Change compared to previous month	Value	% Change compared to previous month
Sep-10	46,027	5%	£19,622,675	7%
Oct-10	44,574	-3%	£18,963,754	-3%
Nov-10	43,936	-1%	£18,358,119	-3%
Dec-10	37,903	-14%	£16,034,547	-13%
Jan-11	42,780	13%	£18,451,829	15%
Feb-11	41,631	-3%	£17,481,602	-5%
Mar-11	45,650	10%	£19,370,823	11%
Apr-11	35,425	-22%	£15,008,393	-23%
May-11	39,525	12%	£16,592,870	11%
Jun-11	42,801	8%	£17,642,272	6%
Jul-11	42,131	-2%	£17,584,693	0%
Aug-11	42,662	1%	£18,422,858	5%

Proceedings claims by month- Percentage breakdown by fee type

The table below provides a percentage breakdown by fee type of Proceedings claims volumes for the period July 2010 to June 2011.

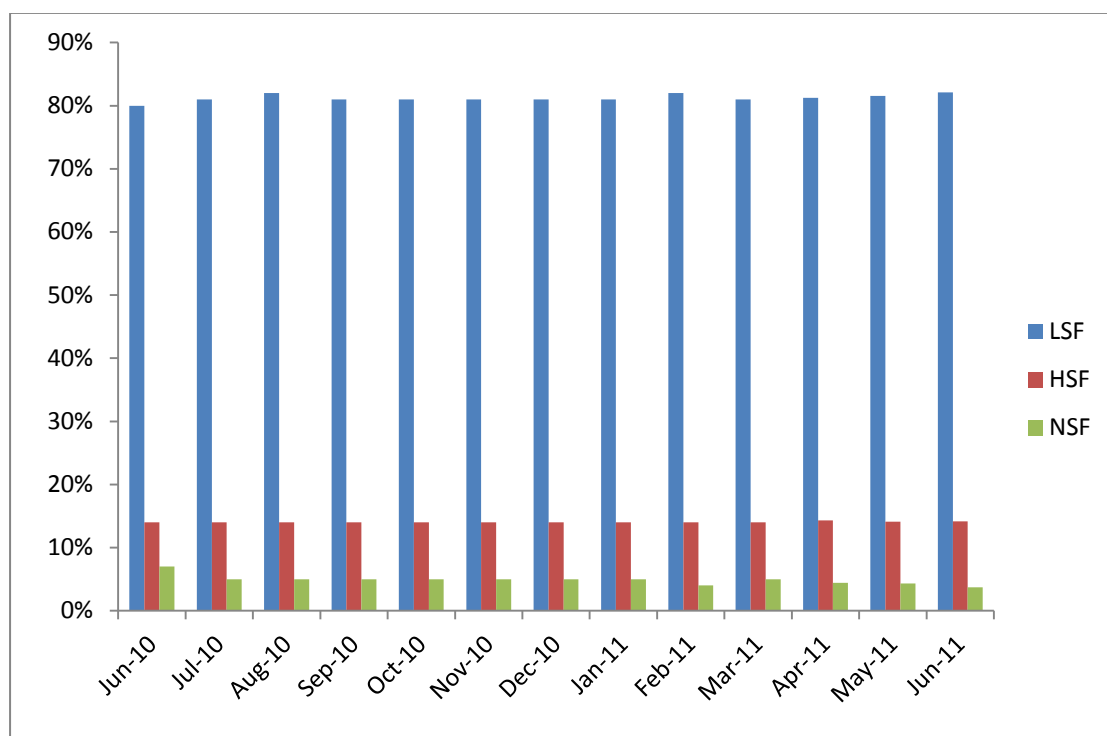
In June 2011, 82% of the total proceedings claim volumes consisted of Lower Standard Fee (LSF) Claims, 14% Higher Standard Fee (LSF) Claims and 4% Non Standard Fee Claims (NSF).

Figure 15: Proceedings claims volume by month-% breakdown by fee type

Submission Month	LSF	HSF	NSF
Jul-10	81%	14%	5%
Aug-10	82%	14%	5%
Sep-10	81%	14%	5%
Oct-10	81%	14%	5%
Nov-10	81%	14%	5%

Dec-10	81%	14%	5%
Jan-11	81%	14%	5%
Feb-11	82%	14%	4%
Mar-11	81%	14%	5%
Apr-11	81%	14%	4%
May-11	82%	14%	4%
Jun-11	82%	14%	4%

Figure 16: Proceedings claims volume by month-% breakdown by fee type



Prison Law

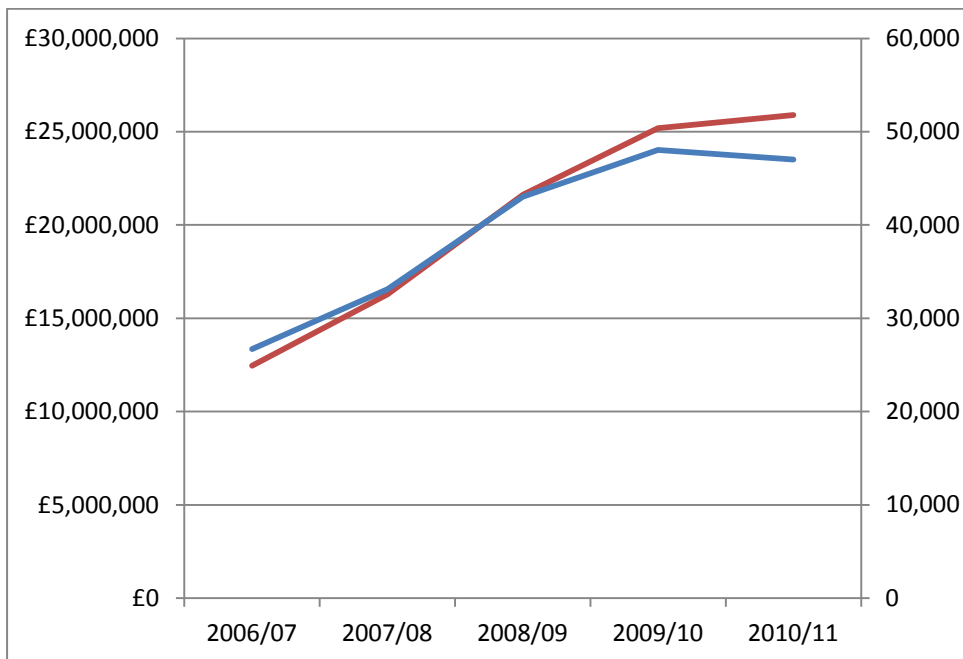
The table below provides a summary of volume and claim value of Prison Law claims for the period 2006/07 to 2010/11. It also provides a year on year percentage change in the figures. The Prison Law volume and value include all Prison Law claim codes.

There was a drop in volume (2%) and rise in value (3%) in Mar 2011 compared to Mar 2010.

Figure 17: Volume and Value of Prison Law claims 2006/07 to 2010/11

Year	Prison Law Claims Volume	% Change	Prison Law Claims Value	% Change
2006/07	26,687		£ 12,459,624	
2007/08	33,108	24%	£ 16,292,130	31%
2008/09	43,029	30%	£ 21,620,867	33%
2009/10	48,040	12%	£ 25,184,978	16%
2010/11	47,026	-2%	£ 25,891,097	3%

Figure 18: Volume and Value of Prison Law claims 2006/07 to 2010/11



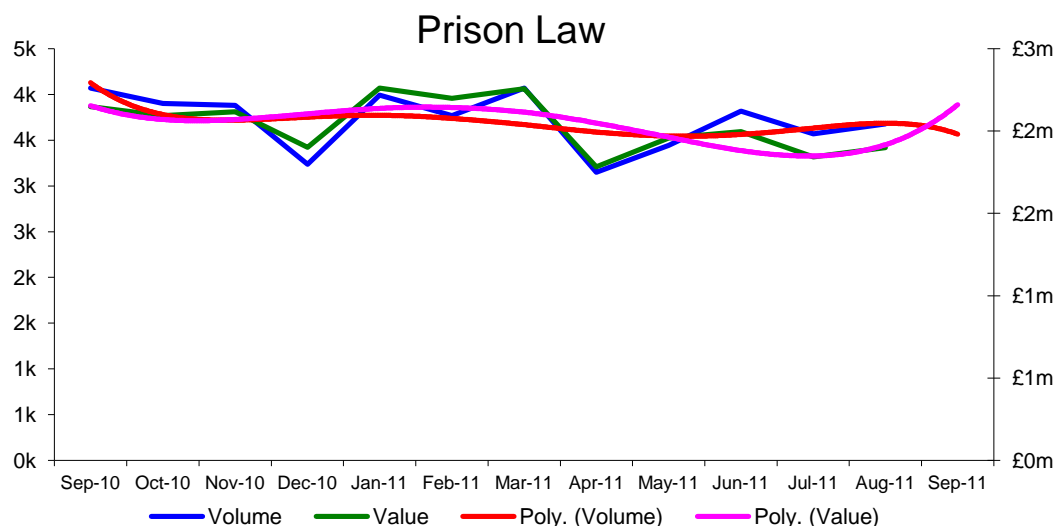
The table below provides a monthly summary of Prison Law claims volume and value for the period September 2010 to August 2011.

Figure 19: Volume and Value of Prison Law claims by month

Month	Volume	Value
Sep-10	4,068	£2,148,586
Oct-10	3,903	£2,092,929
Nov-10	3,880	£2,116,365
Dec-10	3,238	£1,900,756
Jan-11	3,991	£2,260,671
Feb-11	3,770	£2,199,321
Mar-11	4,068	£2,256,789
Apr-11	3,151	£1,782,249

May-11	3,442	£1,957,908
Jun-11	3,817	£1,996,078
Jul-11	3,570	£1,843,418
Aug-11	3,677	£1,898,509

Figure 20: Volume and Value of Prison Law claims by month



Prison Law- Claims current financial year

There was a 6% drop in volume and a 12% drop in value in August 2011 compared to August 2010.

Figure 21: Volume and Value of Prison Law claims September 2010 to August 2011

Month	Volume	Volume Previous Year	% Change	Value	Value Previous Year	% Change
Sep-10	4,068	4,039	1%	£2,148,586	£2,111,627	2%
Oct-10	3,903	4,286	-10%	£2,092,929	£2,224,510	-6%
Nov-10	3,880	4,265	-10%	£2,117,654	£2,334,847	-10%
Dec-10	3,238	3,527	-9%	£1,900,756	£2,028,253	-7%
Jan-11	3,991	4,113	-3%	£2,260,671	£2,155,209	5%
Feb-11	3,770	3,966	-5%	£2,199,321	£2,155,209	2%
Mar-11	4,068	4,419	-9%	£2,256,789	£2,394,053	-6%
Apr-11	3,151	3,770	-20%	£1,782,249	£2,095,980	-18%
May-11	3,442	4,048	-18%	£1,957,908	£2,213,016	-13%
Jun-11	3,817	4,335	-14%	£1,996,078	£2,391,219	-20%
Jul-11	3,570	4,118	-15%	£1,843,418	£2,119,715	-15%
Aug-11	3,677	3,886	-6%	£1,898,509	£2,121,246	-12%

Prison Law by month and claim code

The table below provides the percentage breakdown by claim code of Prison Law claim volumes for the period September 2010 to August 2011.

In August 2011, 81% of the total Prison Law claim volumes consisted of Free standing advice and assistance claims, 11% Advocacy assistance at prison discipline hearings claims and 8% Advocacy assistance at parole board hearings.

Figure 22: Percentage breakdown of prison law claims volume by claim code

Submission Month	PRIA	PRIB	PRIC
Sep-10	83%	10%	7%
Oct-10	84%	9%	7%
Nov-10	82%	10%	8%
Dec-10	80%	11%	9%
Jan-11	81%	11%	10%
Feb-11	82%	10%	9%
Mar-11	81%	11%	9%
Apr-11	79%	12%	9%
May-11	80%	10%	10%
Jun-11	80%	12%	8%
Jul-11	82%	11%	8%
Aug-11	81%	11%	8%

Figure 23: Percentage breakdown of prison law claims volume by claim code

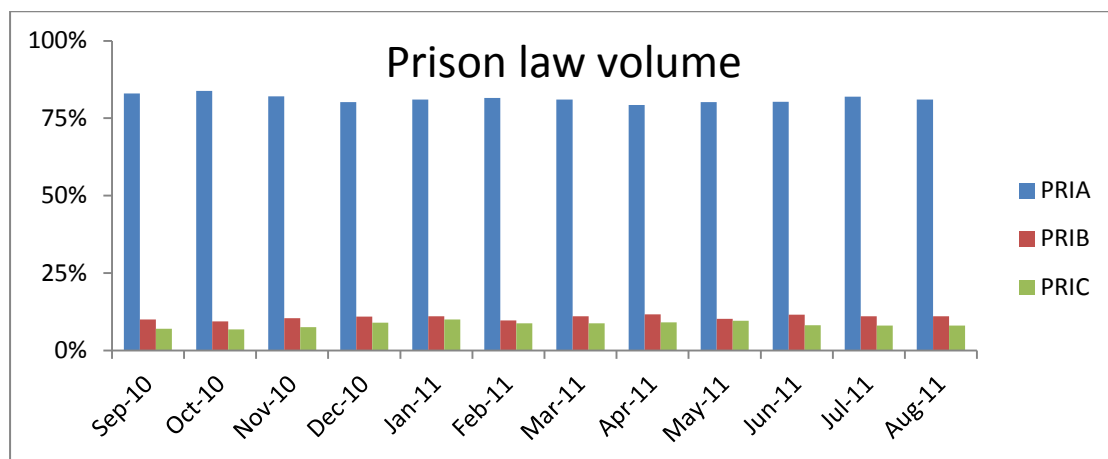
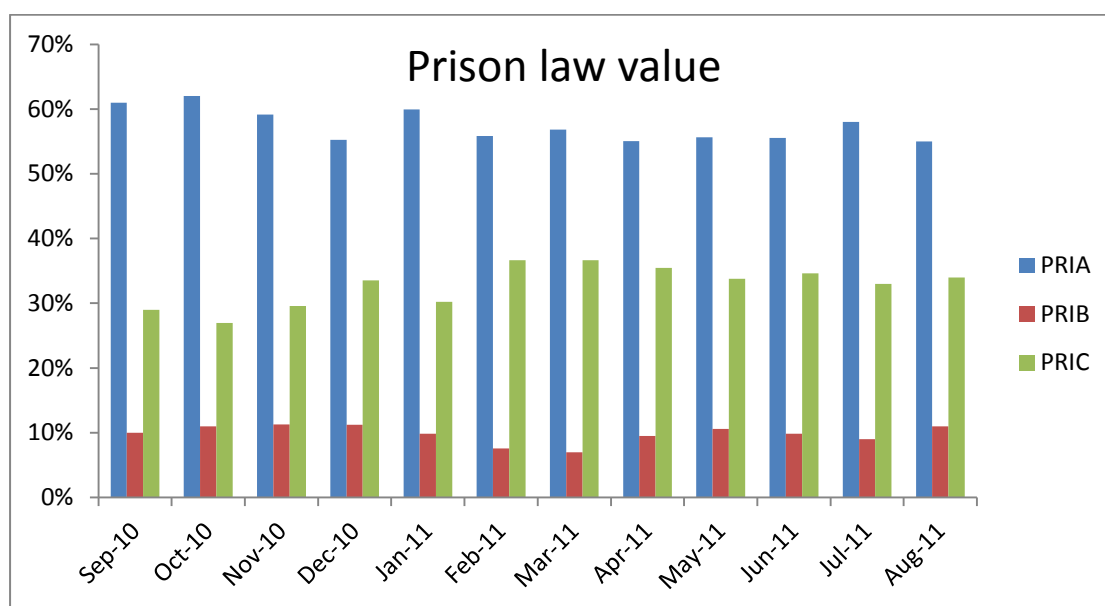


Figure 24: Percentage breakdown of prison law claims value by claim code

Submission Month	PRIA	PRIB	PRIC
Sep-10	61%	10%	29%
Oct-10	62%	11%	27%
Nov-10	59%	11%	30%
Dec-10	55%	11%	34%
Jan-11	60%	10%	30%
Feb-11	56%	8%	37%
Mar-11	57%	7%	37%
Apr-11	55%	10%	35%
May-11	56%	11%	34%
Jun-11	56%	10%	35%
Jul-11	58%	9%	33%
Aug-11	55%	11%	34%

Figure 25: Percentage breakdown of prison law claims value by claim code



Total lower crime

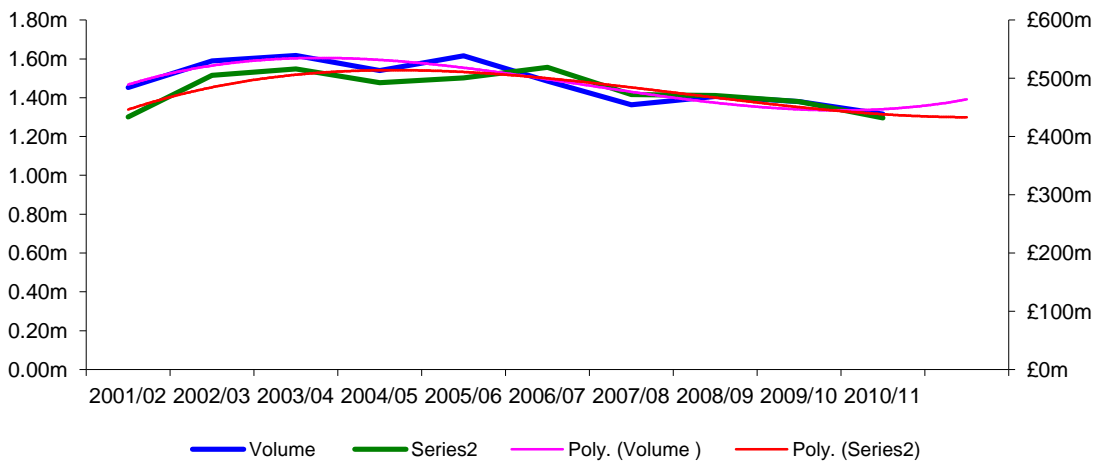
The table below provides a summary of total lower crime volume and value for the period 2006/07 to 2010/11. It's the cumulative total of Investigations, Proceedings and Prison Law claims which have been provided above. It also provides a year on year percentage change in the figures.

Total lower crime value dropped by 5% and value dropped by 6%.

Figure 26: Volume and Value of Lower Crime claims 2001/02 to 2010/11

Year	Lower Crime Claims Volume	% Change	Lower Crime Claims Value	% Change
2001/02	1,451,776		£ 433,762,785	
2002/03	1,590,185	10%	£ 505,330,827	16%
2003/04	1,617,205	2%	£ 515,845,372	2%
2004/05	1,539,304	-5%	£ 492,378,969	-5%
2005/06	1,616,508	5%	£ 500,653,760	2%
2006/07	1,485,147	-2%	£ 518,958,498	4%
2007/08	1,362,912	-8%	£ 472,285,036	-9%
2008/09	1,406,654	6%	£ 470,200,992	-0.44%
2009/10	1,379,461	-2%	£ 460,079,785	-2%
2010/11	1,315,856	-5%	£ 431,896,502	-6%

Figure 27: Volume and Value of Lower Crime claims 2001/02 to 2010/11



Crime Lower SMPs only

The table below provides a summary of lower crime SMP values for FY 2009/10, 2010/11 and for the period April 2011 to July 2011. The values do not include CDS Direct, DSCC & PDS payments.

Figure 28: Crime Lower SMPs (millions)

	Apr	May	Jun	Jul	Aug	Sep	Oct	Nov	Dec	Jan	Feb	Mar	Total
2011/12	33.3	32.4	32	31									128.7
2010/11	39.2	39.4	39.6	38.9	38.5	38	38	37.3	37.4	36	35.2	34.2	417.5
2009/10	39	51.9	36.7	35.6	36	36.3	36.4	36.5	37.3	37.4	38	38.3	460

Investigations claims by scheme

The table below provides the breakdown of investigations claims volume and value by pricing police station scheme for the month of July 2011. The volume and value include all police station claim codes

Figure 30: Investigations claims for August 2011 by scheme

Police Station Scheme Name	CJS	Value	Volume
Abingdon, Didcot & Witney (South Oxfordshire)	Thames Valley	£43,715	161
Aldershot / Petersfield (North East Hampshire)	Hampshire	£40,841	147
Amman Valley	Dyfed-Powys	£2,638	11
Andover / Basingstoke / Winchester (NW Hants)	Hampshire	£59,870	217
Ashbourne / Matlock / High Peak (Buxton)	Derbyshire	£28,012	114
Ashby & Coalville / Loughborough / Melton Mowbray	Leicestershire	£12,812	50
Ashford & Tenterden / Dover / Folkestone	Kent	£94,959	342
Avon North & Thornbury	Avon & Somerset	£31,776	141
Aylesbury	Thames Valley	£35,857	138
Bangor & Caernarfon	North Wales	£29,436	113
Barking	London	£72,327	251
Barnsley	South Yorkshire	£43,397	215
Barnstaple	Devon & Cornwall	£18,374	82
Barrow In Furness	Cumbria	£15,133	73
Basildon	Essex	£39,918	175
Bath	Avon & Somerset	£32,921	131
Bedford	Bedfordshire	£48,264	210
Berwick & Alnwick	Northumbria	£4,376	16
Beverley / Bridlington	Humberside	£18,540	73
Bexley	London	£63,344	237
Bicester / North Oxon (Banbury)	Thames Valley	£27,221	104
Birmingham	West Midlands	£313,673	1,318

Bishop's Stortford / East Hertfordshire	Hertfordshire	£68,873	200
Bishopsgate	London	£45,160	148
Blackburn / Accrington / Ribble Valley	Lancashire	£80,007	337
Blackpool	Lancashire	£59,857	353
Bolton	Greater Mancheste	£55,125	260
Bootle & Crosby	Merseyside	£49,321	230
Boston / Bourne / Stamford	Lincolnshire	£31,413	130
Bournemouth & Christchurch	Dorset	£57,774	326
Bradford	West Yorkshire	£64,068	349
Braintree	Essex	£29,510	107
Brecon & Radnor	Dyfed-Powys	£7,596	27
Brent	London	£174,239	618
Brentford	London	£97,136	336
Brentwood	Essex	£14,740	43
Bridport / West Dorset	Dorset	£29,642	158
Brighton & Hove & Lewes	Sussex	£95,004	402
Bristol	Avon & Somerset	£142,523	703
Bromley	London	£87,818	309
Burnley / Rossendale	Lancashire	£84,091	391
Bury	Greater Mancheste	£50,633	238
Camberwell Green	London	£110,863	392
Cambridge	Cambridgeshire	£43,212	202
Canterbury / Thanet	Kent	£65,795	283
Cardiff	South Wales	£152,702	636
Carmarthen East Dyfed	Dyfed-Powys	£5,312	18
Carrick / Kerrier (Camborne) / Penwith	Devon & Cornwall	£37,456	155
Central London	London	£377,995	1,246
Chelmsford / Witham	Essex	£21,063	85
Cheltenham	Gloucestershire	£39,105	182
Chester / Vale Royal (Northwich)	Cheshire	£64,176	292
Chesterfield	Derbyshire	£50,942	213
Chichester & District	Sussex	£44,291	200
Chippenham / Trowbridge	Wiltshire	£46,509	190

Chorley / Ormskirk / South Ribble & Leyland	Lancashire	£58,334	254
Clacton & Harwich / Colchester	Essex	£73,903	303
Clerkenwell/Hampstead	London	£113,957	401
Colwyn Bay	North Wales	£781	3
Corby (Kettering) / Welling	Northamptonshire	£63,302	293
Coventry	West Midlands	£53,234	256
Crawley / Horsham	Sussex	£111,767	360
Crewe & Nantwich / Sandbach & Congleton / Macclesfield	Cheshire	£79,429	328
Cromer & North Walsham	Norfolk	£26,798	108
Croydon	London	£113,621	412
Cynon Valley	South Wales	£741	3
Dacorum (Hemel Hempstead)	Hertfordshire	£56,199	204
Darlington	Durham	£18,241	83
Dartford & Gravesend	Kent	£58,754	191
Denbighshire	North Wales	£51,262	197
Derby / Swadlincote	Derbyshire	£170,995	718
Dereham	Norfolk	£3,128	11
Derwentside	Durham	£5,905	27
Dewsbury	West Yorkshire	£32,701	158
Diss / Thetford	Suffolk	£4,606	17
Dolgellau	North Wales	£6,017	23
Doncaster	South Yorkshire	£64,079	316
Dudley & Halesowen	West Midlands	£28,904	121
Durham	Durham	£34,554	143
Ealing	London	£119,174	409
Easington	Durham	£19,786	90
East Cornwall	Devon & Cornwall	£61,087	221
East Derbyshire (Ripley) / Ilkeston	Derbyshire	£7,291	25
East Gwent	Gwent	£11,310	47
Eastbourne	Sussex	£55,676	239
Ely	Cambridgeshire	£2,261	10
Enfield	London	£99,058	348
Epsom	Surrey	£2,596	9
Exeter	Devon & Cornwall	£49,175	239

Felixstowe / Ipswich & District / Woodbridge	Suffolk	£56,937	253
Fleetwood	Lancashire	£363	2
Gateshead	Northumbria	£33,054	174
Gloucester	Gloucestershire	£41,607	193
Goole	Humberside	£11,806	49
Gosport & Fareham	Hampshire	£34,962	123
Grantham & Sleaford	Lincolnshire	£16,770	78
Grays	Essex	£51,482	168
Great Yarmouth	Norfolk	£36,174	161
Greenwich/Woolwich	London	£222,485	812
Grimsby & Cleethorpes	Humberside	£49,308	289
Guildford & Farnham	Surrey	£40,563	169
Halifax	West Yorkshire	£45,603	198
Haringey	London	£98,409	338
Harlow & Loughton	Essex	£57,250	179
Harrogate & Ripon	North Yorkshire	£20,489	85
Harrow	London	£49,970	175
Hartlepool	Cleveland	£24,734	152
Hastings	Sussex	£30,871	165
Havering	London	£55,094	209
Heathrow	London	£17,203	47
Hendon/Barnet	London	£94,542	339
Hereford / Leominster	West Mercia	£30,312	144
High Wycombe & Amersham	Thames Valley	£43,547	165
Highbury Corner	London	£137,886	476
Hinckley / Market			
Harborough	Leicestershire	£284	1
Huddersfield	West Yorkshire	£47,883	237
Hull	Humberside	£103,374	537
Huntingdon	Cambridgeshire	£35,011	150
Isle Of Wight	Hampshire	£24,996	114
Keighley & Bingley	West Yorkshire	£46,795	223
Kendal & Windermere	Cumbria	£13,587	53
Kidderminster / Redditch	West Mercia	£55,460	204
Kings Lynn & West Norfolk	Norfolk	£46,471	209
Kingston-Upon-Thames	London	£41,756	144
Knowsley	Merseyside	£5,243	23
Lancaster	Lancashire	£45,657	217

Leamington / Nuneaton / Rugby	Warwickshire	£78,920	306
Leeds	West Yorkshire	£211,827	1,105
Leicester	Leicestershire	£207,671	890
Lichfield & Tamworth / Burton Upon Trent / Uttoxeter	Staffordshire	£60,934	254
Lincoln / Gainsborough	Lincolnshire	£42,687	197
Liverpool	Merseyside	£148,205	638
Llanelli	Dyfed-Powys	£19,693	96
Lower Rhymney Valley / North Bedwellty / South Bedwellty	Gwent	£70,680	285
Lowestoft / Beccles & Halesworth / Aldeburgh	Norfolk	£26,581	115
Luton	Bedfordshire	£110,466	468
Maidstone & West Malling	Kent	£47,380	161
Manchester	Greater Manchestere	£190,365	794
Mansfield	Nottinghamshire	£65,102	299
March & Wisbech	Norfolk	£2,199	9
Medway	Kent	£71,378	268
Mendip & South Somerset	Avon & Somerset	£30,208	108
Merthyr Tydfil	South Wales	£33,254	141
Mid Glamorgan & Miskin	South Wales	£32,961	134
Mid Wales	Dyfed-Powys	£9,866	47
Milton Keynes	Thames Valley	£57,953	276
Mold & Hawarden	North Wales	£18,283	73
Neath	South Wales	£27,043	107
Newark	Nottinghamshire	£8,324	33
Newcastle & Ogmore	South Wales	£28,229	114
Newcastle upon Tyne	Northumbria	£96,390	522
Newham	London	£144,039	499
Newport	Gwent	£61,888	269
North Anglesey	North Wales	£8,371	30
North Ceredigion / South Ceredigion	Dyfed-Powys	£20,589	74
North Tyneside	Northumbria	£51,092	273
North West Surrey (Woking)	Surrey	£37,572	145
Northallerton & Richmond	North Yorkshire	£11,303	46

Northampton	Northamptonshire	£98,874	444
Norwich & District	Norfolk	£72,840	323
Nottingham	Nottinghamshire	£210,825	886
Old Street	London	£119,845	431
Oldham	Greater Mancheste	£60,377	324
Oxford	Thames Valley	£42,668	166
Pembrokeshire	Dyfed-Powys	£21,665	95
Penrith / Carlisle	Cumbria	£31,747	141
Peterborough	Cambridgeshire	£48,429	252
Plymouth	Devon & Cornwall	£93,133	391
Pontefract & Castleford	West Yorkshire	£39,135	199
Poole East Dorset	Dorset	£14,890	80
Port Talbot	South Wales	£1,185	4
Portsmouth / Waterlooville	Hampshire	£102,629	447
Preston	Lancashire	£40,755	214
Pwllheli	North Wales	£541	3
Rayleigh / Southend On Sea	Essex	£72,789	332
Reading	Thames Valley	£93,150	379
Redbridge	London	£84,315	290
Richmond-Upon- Thames	London	£40,496	129
Rochdale / Middleton	Greater Mancheste	£48,515	214
Rotherham	South Yorkshire	£42,701	201
Salford	Greater Mancheste	£76,870	324
Salisbury	Wiltshire	£29,706	136
Sandwell	West Midlands	£59,240	247
Scarborough / Whitby	North Yorkshire	£22,419	135
Scunthorpe	Humberside	£32,571	178
Sedgemoor / Taunton Deane	Avon & Somerset	£65,285	280
Sheffield	South Yorkshire	£99,341	443
Shrewsbury	West Mercia	£38,831	173
Skegness	Lincolnshire	£16,723	82
Skipton, Settle & Ingleton	North Yorkshire	£6,056	25
Slough (East Berkshire)	Thames Valley	£99,489	359
Solihull	West Midlands	£36,073	144
South Durham	Durham	£32,090	155
South East Northumberland	Northumbria	£55,869	277
South East Surrey	Surrey	£58,868	211
South London	London	£72,272	247
South Tyneside	Northumbria	£32,438	181

South West Hants (Southampt	Hampshire	£142,411	560
Southport	Merseyside	£12,481	67
St Albans	Hertfordshire	£87,503	305
St Helens	Merseyside	£35,037	168
Stafford / Cannock & Rugeley	Staffordshire	£45,529	197
Staines	Surrey	£69,344	219
Stansted	Essex	£8,801	24
Stevenage & North Hertfordshire	Hertfordshire	£65,048	205
Stockport	Greater Mancheste	£60,842	277
Stoke on Trent / Leek	Staffordshire	£156,309	677
Stroud	Gloucestershire	£2,602	10
Sudbury & Hadleigh / Bury St Edmunds / Haverhill / Newmarket	Suffolk	£42,372	168
Sunderland / Houghton Le Spring	Northumbria	£76,294	383
Sutton	London	£93,734	328
Swale	Kent	£32,845	109
Swansea	South Wales	£60,550	264
Swindon	Wiltshire	£49,588	214
Tameside	Greater Mancheste	£59,548	289
Teeside	Cleveland	£120,254	659
Teignbridge / Torbay	Devon & Cornwall	£59,219	267
Telford	West Mercia	£42,908	182
Thames	London	£103,783	375
Total		£1,486,795	6,211
Tower Bridge	London	£164,880	548
Trafford	Greater Mancheste	£44,510	189
Tynedale & Hexham	Northumbria	£646	3
Uxbridge	London	£101,822	375
Vale of Glamorgan	South Wales	£19,130	67
Wakefield	West Yorkshire	£46,808	232
Walsall	West Midlands	£88,259	368
Waltham Forest	London	£82,764	308
Warrington / Halton	Cheshire	£49,393	243
Watford	Hertfordshire	£7,711	27
West Berkshire (Newbury Etc)	Thames Valley	£26,579	116
West Kent (Tonbridge)	Kent	£60,962	224
West London	London	£95,912	316

Weston-Super-Mare	Avon & Somerset	£33,757	146
Whitehaven / Workington	Cumbria	£25,044	130
Wigan	Greater Mancheste	£57,264	254
Wimbledon	London	£22,451	78
Wirral	Merseyside	£71,296	342
Wolverhampton & Seisdon	West Midlands	£77,361	329
Worcester	West Mercia	£51,080	217
Worksop & East Retford	Nottinghamshire	£21,319	88
Worthing	Sussex	£57,669	268
Wrexham	North Wales	£44,003	205
York / Selby	North Yorkshire	£57,804	271