



Crime Contracts Consultative Group (CCCG)

Volume and Value figures report

April 2011

Table of Contents

Investigations	1
Investigations claims by month	2
Criminal Defence Service (CDS) Direct	3
Proceedings	4
Proceedings claims by month	5
Magistrates' Courts Means Assessment Test -MAAT Figures	9
Prison Law	10
Prison Law by month and claim code	12
Total lower crime	14

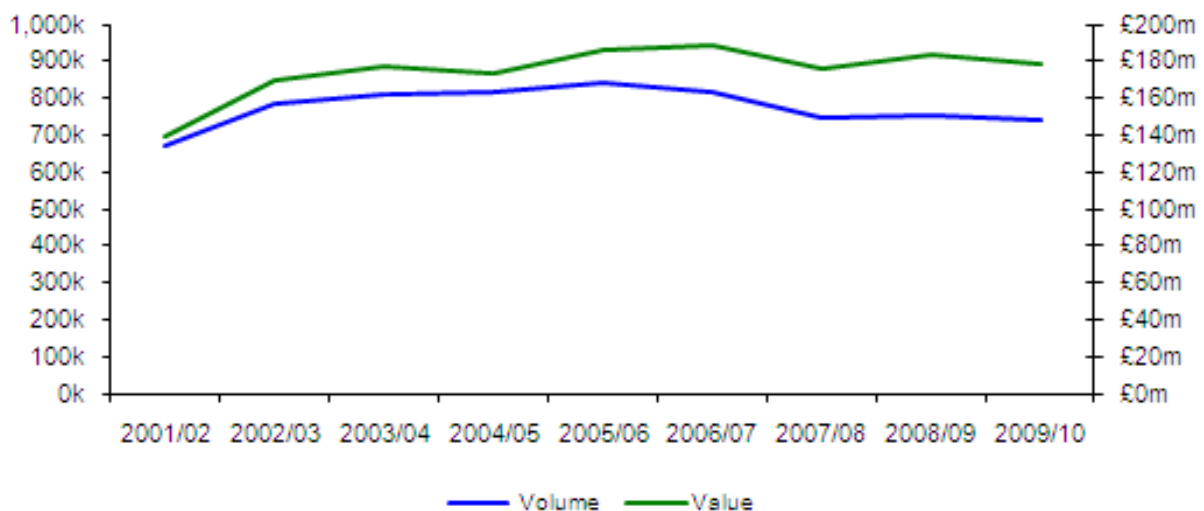
Investigations

The table below provides a summary of volume and claim value of investigations claims for the period 2001/02 to 2009/10. It also provides a year on year percentage change in the figures. The Investigations volume and value include all police station claim codes.

Figure 1: Volume and Value of Investigations Claims 2001/02 to 2009/10

Year	Investigations Claims Volume	% Change	Investigations Claims Value	% Change	Savings
2001/02	672,904		£ 139,378,063		
2002/03	782,622	16%	£ 169,456,018	22%	
2003/04	811,540	4%	£ 177,127,395	5%	
2004/05	819,479	1%	£ 173,703,404	-2%	
2005/06	839,829	2%	£ 185,952,559	7%	
2006/07	818,330	-3%	£ 189,118,848	2%	
2007/08	749,155	-8%	£ 176,146,439	-7%	
2008/09	756,101	1%	£ 183,322,623	4%	£16m in cash terms due to introduction of fixed fees
2009/10	737,815	-2%	£ 178,232,330	-3%	£18m in cash terms due to introduction of fixed fees

Figure 2: Volume and Value of Investigations Claims 2001/02 to 2009/10



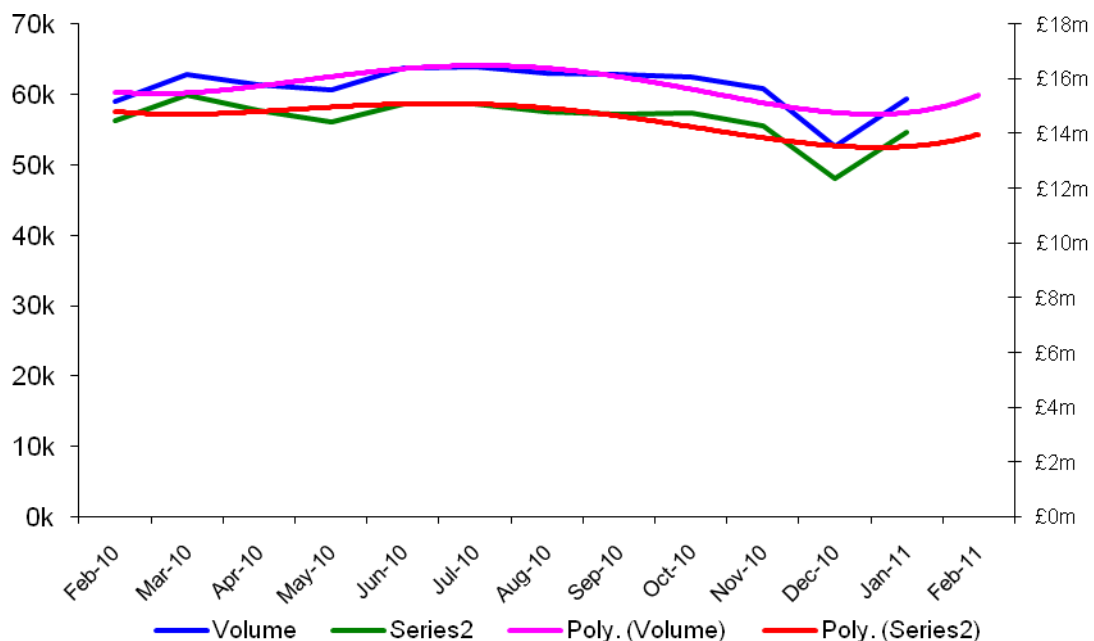
Investigations claims by month

The table below provides a monthly summary of investigations claims volume and value for the period February 2010 to January 2011. It also shows the percentage change in comparison to the same month in the previous year. The Investigations by month volume and value include all police station claim codes.

Figure 3: Volume and Value of Investigations Claims by month

Month	Volume	Volume Previous Year	% Change	Value	Value Previous Year	% Change
Feb-10	58,963	60,654	-3%	£ 14,452,476	£ 14,546,521	-1%
Mar-10	62,792	64,241	-2%	£ 15,402,883	£ 15,383,309	0%
Apr-10	61,366	61,147	0%	£ 14,860,008	£14,675,732	1%
May-10	60,643	61,365	-1%	£ 14,400,486	£14,696,465	-2%
Jun-10	63,819	63,312	1%	£15,095,537	£15,176,243	-1%
Jul-10	63,831	64,769	-1%	£15,057,938	£15,544,087	-3%
Aug-10	63,063	61,183	3%	£14,792,402	£14,674,820	0.79%
Sep-10	62,751	63,437	-1%	£ 14,700,943	£15,264,231	-4%
Oct-10	62,411	63,456	-2%	£ 14,728,154	£15,237,751	-3%
Nov-10	60,875	60,588	0%	£14,272,269	£14,530,813	-2%
Dec-10	52,569	55,948	-6%	£12,337,355	£13,476,996	-9%
Jan-11	59,302	61,235	-3%	£14,023,191	£14,987,739	-7%

Figure 4: Volume and Value of Investigations Claims by month



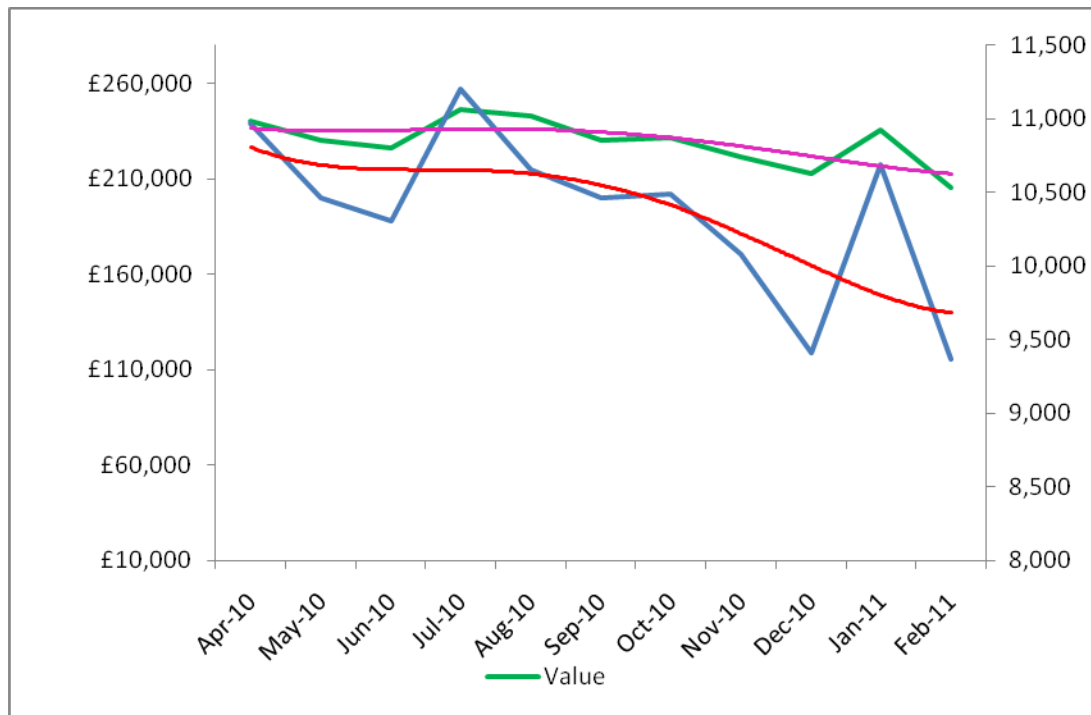
Criminal Defence Service (CDS) Direct

The tables below provide a monthly summary of CDS Direct cases volume and value for the period April 10 to February 11.

Figure 5: Volume and Value of CDS Direct Cases by month from April 10 to February 11

Month	Cases	Cost
Apr-10	10,964	£240,132
May-10	10,465	£230,352
Jun-10	10,306	£225,913
Jul-10	11,206	£246,550
Aug-10	10,658	£243,133
Sep-10	10,462	£230,231
Oct-10	10,491	£231,321
Nov-10	10,079	£221,480
Dec-10	9,411	£212,559
Jan-11	10,691	£235,412
Feb-11	9,368	£205,411
Totals	114,101	£2,522,494

Figure 6: Volume and Value of CDS Direct Cases by month from April 10 to February 11



Proceedings

The table below provides a summary of volume and claim value of Proceedings claims for the period 2001/02 to 2009/10. It also provides a year on year percentage change in the figures. The Proceedings volume and value include all Magistrates' Court claim codes.

Figure 7: Volume and Value of Proceedings Claims 2001/02 to 2009/10

Year	Proceedings Claims Volume	% Change	Proceedings Claims Value	% Change
2001/02	615,395		£217,319,875	
2002/03 ¹	783,495	27%	£322,099,577	48%
2003/04	784,911	0%	£328,352,681	2%
2004/05	697,966	-11%	£311,930,090	-5%
2005/06	692,154	-1%	£325,070,797	4%
2006/07 ²	640,130	-8%	£317,380,026	-2%
2007/08	580,649	-9%	£279,846,466	-12%
2008/09	607,524	5%	£265,257,503	-5%
2009/10	593,606	-2%	£256,662,477	-3%

Figure 8: Volume and Value of Proceedings Claims 2001/02 to 2009/10



¹ Means testing abolished

² Means testing re-introduced

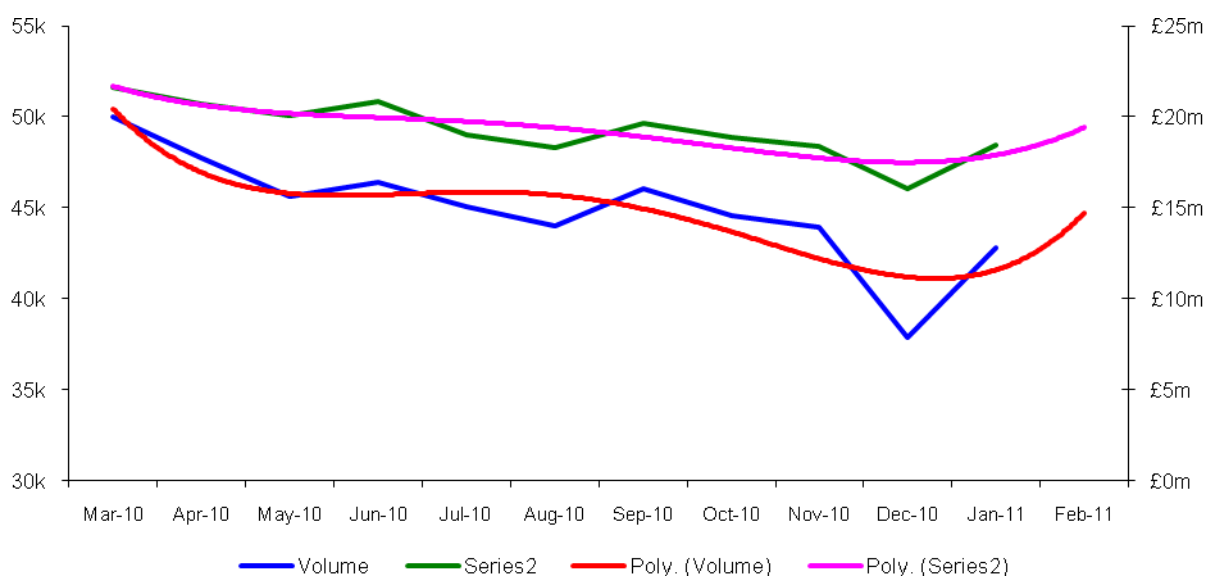
Proceedings claims by month

The table below provides a monthly summary of Proceedings claims volume and value for the period March 2010 to January 2011. It also shows the percentage change in comparison to the same month in the previous year. The Proceedings volume and value by month include all Magistrates' Court claim codes.

Figure 9: Volume and Value of Proceedings Claims by month

Month	Volume	Volume Previous Year	% Change	Value	Value Previous Year	% Change
Mar-10	50,014	52,756	-5%	£21,584,393	£ 24,473,924	-13%
Apr-10	47,711	49,425	-4%	£ 20,704,783	£21,067,588	-2%
May-10	45,603	47,743	-5%	£ 20,090,670	£20,239,512	-1%
Jun-10	46,384	51,713	-11%	£ 20,875,129	£22,352,697	-7%
Jul-10	45,045	53,397	-19%	£ 18,987,672	£23,018,229	-21%
Aug-10	44,034	48,388	-10%	£ 18,330,392	£20,420,848	-11%
Sep-10	46,027	52,008	-13%	£ 19,622,675	£22,364,167	-14%
Oct-10	44,510	52,192	-17%	£ 18,844,764	£22,589,000	-20%
Nov-10	43,892	48,900	-11%	£18,276,164	£21,393,711	-17%
Dec-10	37,903	43,184	-14%	£16,034,547	£19,249,334	-20%
Jan-11	42,780	48748	-14%	18,451,829	£21,301,621	-15%

Figure 10: Volume and Value of Proceedings Claims by month



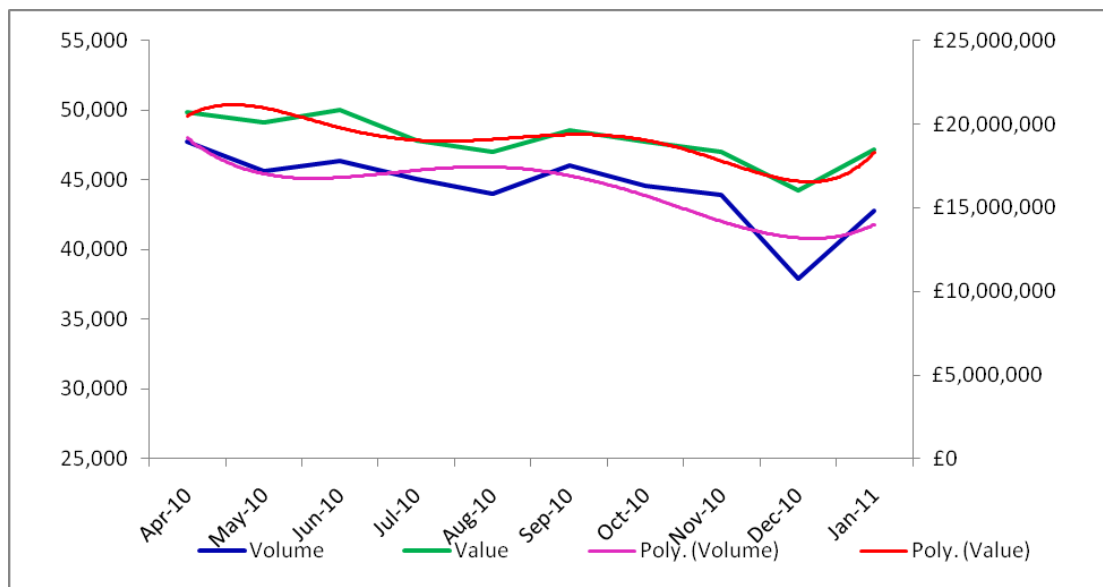
Proceedings claims by month (FY 2010/11)

The table below provides a monthly summary of Proceedings claims volume and value for the period April to January 2011. It also shows the percentage change in comparison to the previous month. The Proceedings volume and value by month include all Magistrates' Court claim codes.

Figure 11: Volume and Value of Proceedings Claims by month compared to previous month

Month	Volume	% Change compared to previous month	Value	% Change compared to previous month
Apr-10	47,711		£20,704,783	
May-10	45,603	-4%	£20,090,670	-3%
Jun-10	46,384	2%	£20,875,129	4%
Jul-10	45,045	-3%	£18,987,672	-9%
Aug-10	44,034	-2%	£18,330,392	-3%
Sep-10	46,027	5%	£19,622,675	7%
Oct-10	44,574	-3%	18,963,754	-3%
Nov-10	43,936	-1%	18,358,119	-3%
Dec-10	37,903	-14%	16,034,547	-13%
Jan-11	42,780	13%	18,451,829	15%

Figure 12: Volume and Value of Proceedings Claims by month compared to previous month



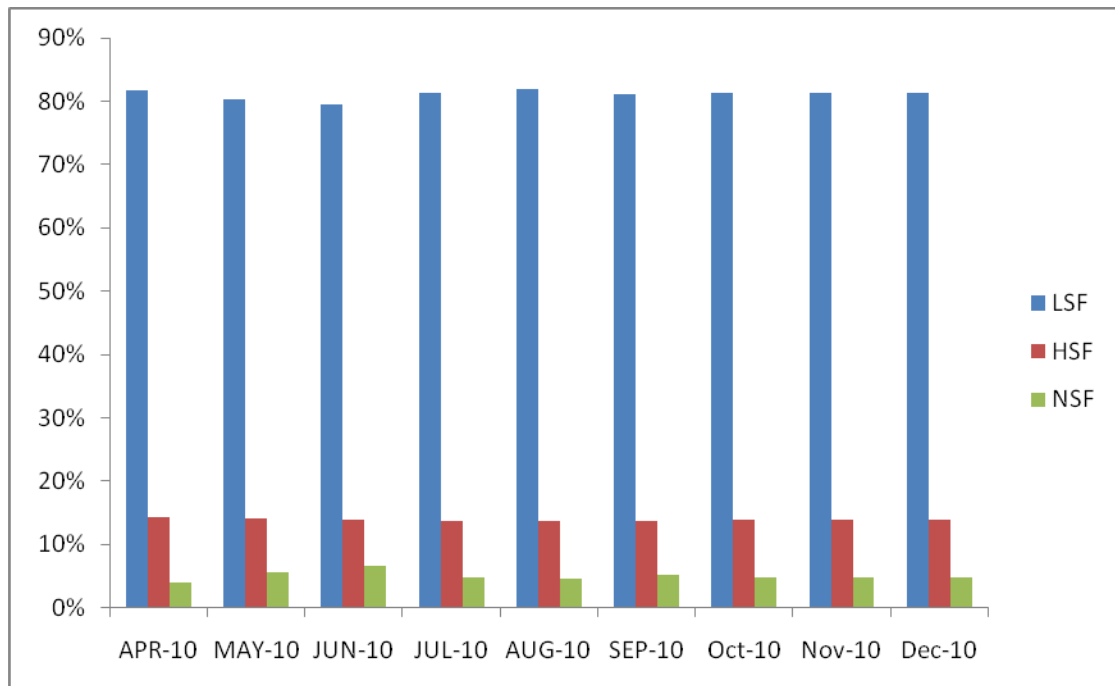
Proceedings claims by month- Percentage breakdown by fee type

The table below provides a percentage breakdown by fee type of Proceedings claims volumes for the period April to January 2011. In this period, on average 81% of the total proceedings claim volumes consisted of Lower Standard Fee (LSF) Claims.

Figure 13: Proceedings claims volume by month-% breakdown by fee type

Submission Month	LSF	HSF	NSF
APR-10	82%	14%	4%
MAY-10	80%	14%	6%
JUN-10	80%	14%	7%
JUL-10	81%	14%	5%
AUG-10	82%	14%	5%
SEP-10	81%	14%	5%
Oct-10	81%	14%	5%
Nov-10	81%	14%	5%
Dec-10	81%	14%	5%
Jan-11	81%	14%	5%

Figure 14: Proceedings claims volume by month-% breakdown by fee type



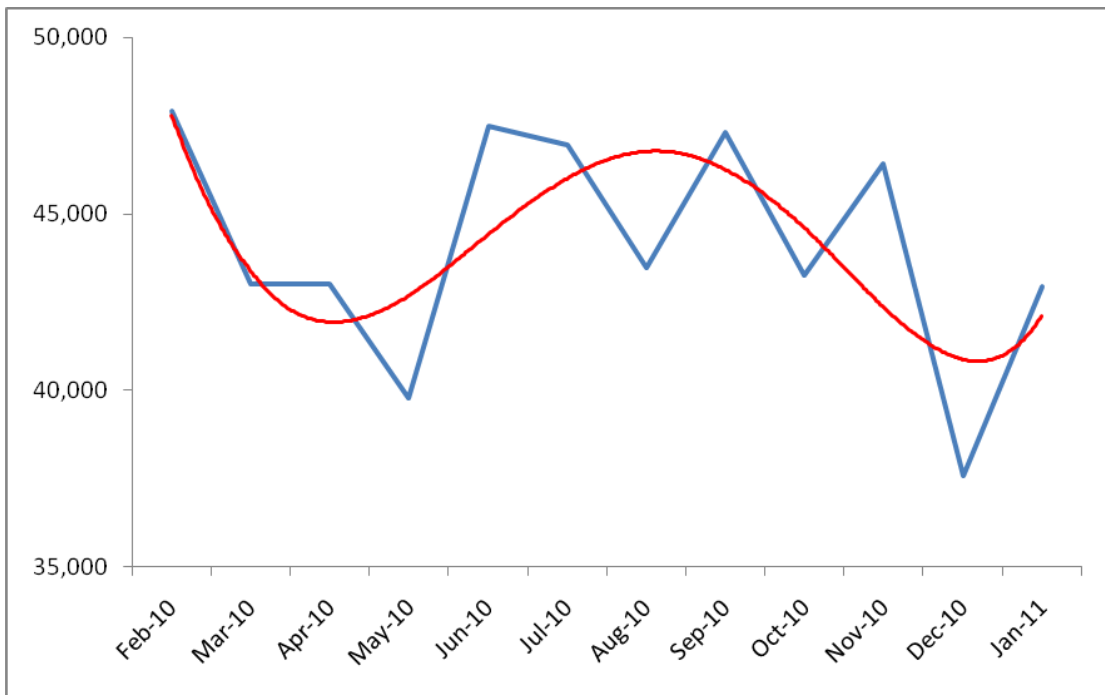
Magistrates' Courts Means Assessment Test -MAAT Figures

The table below provides a summary of the Magistrates' Courts Means Test Performance Report. It also provides a month by month percentage change in the number of grants.

Figure 15: Means Assessment and Appeals Tool (MAAT) Grants by month

Month	Grants	% Change
Feb-10	42,998	2%
Mar-10	47,911	11%
Apr-10	43,028	-10%
May-10	39,788	-8%
Jun-10	47,508	19%
Jul-10	47,062	-1%
Aug-10	43,597	-7%
Sep-10	47,639	9%
Oct-10	43,266	-9%
Nov-10	46,411	7%
Dec-10	37,583	-19%
Jan-11	42,933	14%

Figure 16: Means Assessment and Appeals Tool (MAAT) Grants by month



Prison Law

The table below provides a summary of volume and claim value of Prison Law claims for the period 2006/07 to 2009/10. It also provides a year on year percentage change in the figures. The Prison Law volume and value include all Prison Law claim codes.

Figure 17: Volume and Value of Prison Law claims 2006/07 to 2009/10

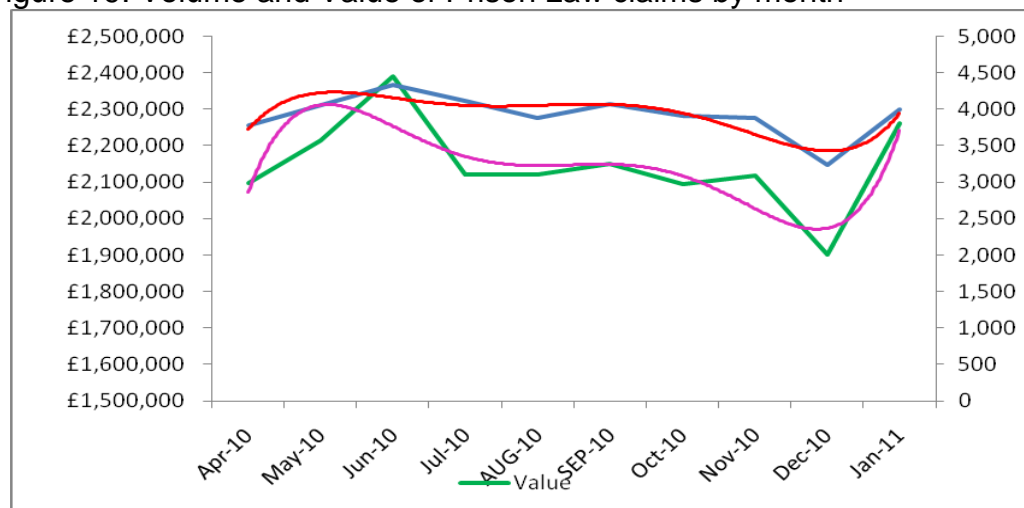
Year	Prison Law Claims Volume	% Change	Prison Law Claims Value	% Change
2006/07	26,687		£ 12,459,624	
2007/08	33,108	24%	£ 16,292,130	31%
2008/09	43,029	30%	£ 21,620,867	33%
2009/10	48,040	12%	£ 25,184,978	16%

The table below provides a monthly summary of Prison Law claims volume and value for the period April 2010 to January 2011.

Figure 18: Volume and Value of Prison Law claims by month

Month	Prison Law Claims Volume	Prison Law Claims Value
Apr-10	3770	£2,095,980
May-10	4048	£2,213,016
Jun-10	4,335	£2,391,219
Jul-10	4,118	£2,119,715
Aug-10	3,886	£2,121,246
Sep-10	4,068	£2,148,586
Oct-10	3,903	£2,092,929
Nov-10	3,880	£2,116,365
Dec-10	3,238	£1,900,756
Jan-11	3,238	£1,900,756

Figure 19: Volume and Value of Prison Law claims by month

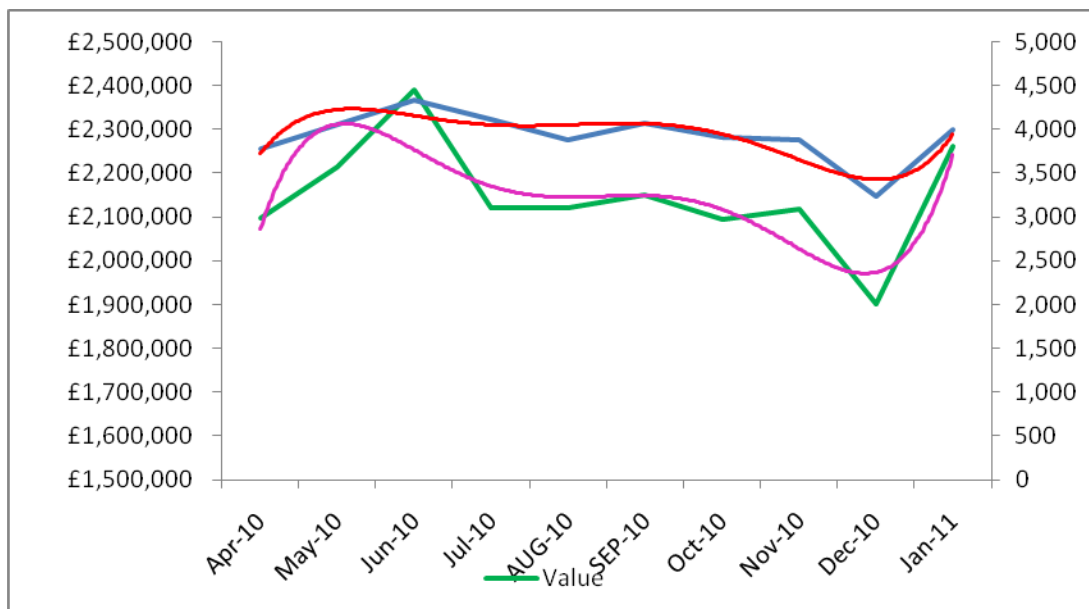


Prison Law- Claims current financial year

Figure 20: Volume and Value of Prison Law claims April 10 to January 2011

Month	Volume	Volume Previous Year	% Change	Value	Value Previous Year	% Change
Apr-10	3770	3,716	1%	£2,095,980	£1,785,540	15%
May-10	4048	3,754	7%	£2,213,016	£1,824,676	18%
Jun-10	4,335	3,717	14%	£2,391,219	£2,002,501	16%
Jul-10	4,118	4,259	-3%	£ 2,119,715	£2,067,851	2%
AUG-10	3,886	3,987	-3%	£2,121,246	£2,044,932	4%
SEP-10	4,068	4,039	1%	£ 2,148,586	£2,111,627	2%
Oct-10	3,903	4,286	-10%	£2,092,929	£2,224,510	-6%
Nov-10	3,880	4,265	-10%	2,117,654	£2,334,847	-10%
Dec-10	3,238	3,527	-9%	1,900,756	£2,028,253	-7%
Jan-11	3,991	4113	-3%	2,260,671	£2,155,209	5%

Figure 21: Volume and Value of Prison Law claims April 10 to January 2011



Prison Law by month and claim code

The table below provides the percentage breakdown by claim code of Prison Law claim volumes for the period August 2009 to December 2010.

Figure 22: Percentage breakdown of prison law claims volume by claim code

Submission Month	PRIA Free standing advice and assistance	PRIB Advocacy assistance at prison discipline hearings	PRIC Advocacy assistance at parole board hearings
Feb-10	80%	12%	7%
Mar-10	83%	10%	7%
Apr-10	82%	11%	7%
May-10	83%	10%	7%
Jun-10	83%	9%	8%
Jul-10	84%	10%	6%
Aug-10	83%	10%	7%
Sep-10	83%	10%	7%
Oct-10	84%	9%	7%
Nov-10	82%	10%	8%
Dec-10	80%	11%	9%
Jan-11	81%	11%	10%

Figure 23: Percentage breakdown of prison law claims volume by claim code

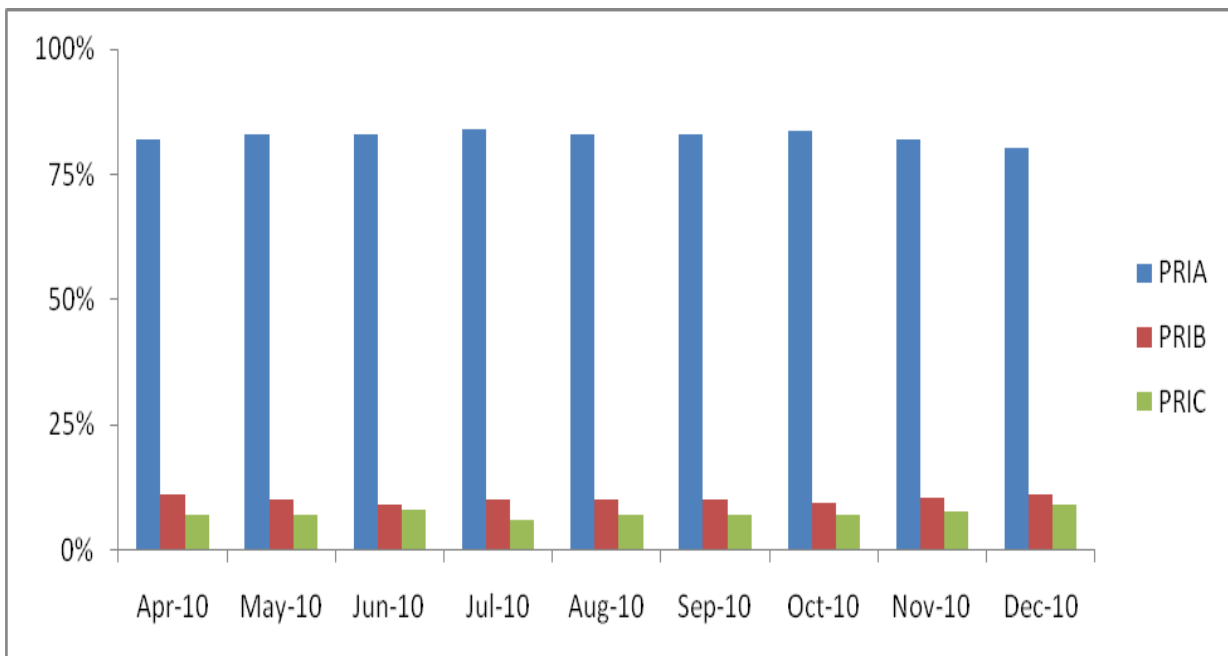
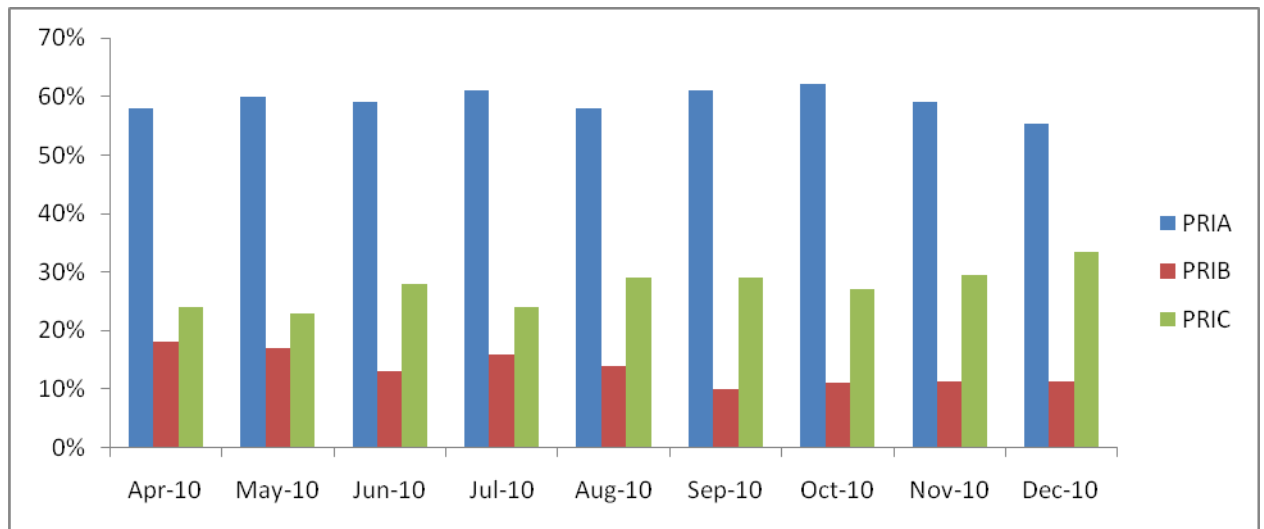


Figure 24: Percentage breakdown of prison law claims value by claim code

Submission Month	PRIA Free standing advice and assistance	PRIB Advocacy assistance at prison discipline hearings	PRIC Advocacy assistance at parole board hearings
Feb-10	58%	14%	28%
Mar-10	61%	14%	26%
Apr-10	58%	18%	24%
May-10	60%	17%	23%
Jun-10	59%	13%	28%
Jul-10	61%	16%	24%
Aug-10	58%	14%	29%
Sep-10	61%	10%	29%
Oct-10	62%	11%	27%
Nov-10	59%	11%	30%
Dec-10	55%	11%	34%
Jan-11	56%	10%	34%

Figure 25: Percentage breakdown of prison law claims value by claim code



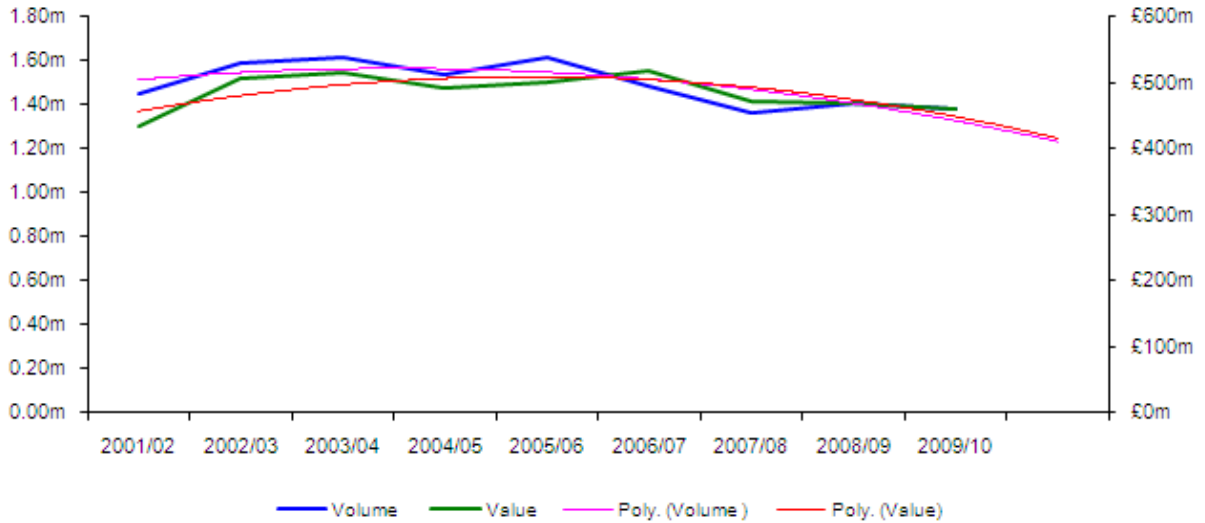
Total lower crime

The table below provides a summary of total lower crime volume and value for the period 2006/07 to 2008/09. It's the cumulative total of Investigations, Proceedings and Prison Law claims which have been provided above. It also provides a year on year percentage change in the figures.

Figure 26: Volume and Value of Lower Crime claims 2001/02 to 2009/10

Year	Lower Crime Claims Volume	% Change	Lower Crime Claims Value	% Change
2001/02	1,451,776		£ 433,762,785	
2002/03	1,590,185	10%	£ 505,330,827	16%
2003/04	1,617,205	2%	£ 515,845,372	2%
2004/05	1,539,304	-5%	£ 492,378,969	-5%
2005/06	1,616,508	5%	£ 500,653,760	2%
2006/07	1,485,147	-2%	£ 518,958,498	4%
2007/08	1,362,912	-8%	£ 472,285,036	-9%
2008/09	1,406,654	6%	£ 470,200,992	-0.44%
2009/10	1,379,461	-2%	£460,079,785	-2%

Figure 27: Volume and Value of Lower Crime claims 2001/02 to 2009/10



Crime Lower SMPs only

The table below provides a summary of lower crime SMP values for FY 2009/10 and for the period April 2010 to January 2011. The values do not include CDS Direct, DSCC & PDS payments.

Figure 28: Crime Lower SMPs

	Apr	May	Jun	Jul	Aug	Sep	Oct	Nov	Dec	Jan	Feb	Mar	Total
2010/11	38.2	39.4	39.6	38.9	38.5	37.5	37.6	37.2	37.1	36.0			£380m
2009/10	39.0	51.9	36.7	35.6	36.0	36.3	36.4	36.5	37.3	37.4	38.0	38.3	£460m