

## Crime Contracts Consultative Group (CCCG)

### Volume and Value figures report

January 2011

## Table of Contents

Investigations	1
Investigations claims by month	2
Criminal Defence Service (CDS) Direct	3
Proceedings	4
Proceedings claims by month	5
Magistrates' Courts Means Assessment Test -MAAT Figures	9
Prison Law	10
Prison Law by month and claim code	12
Total lower crime	14

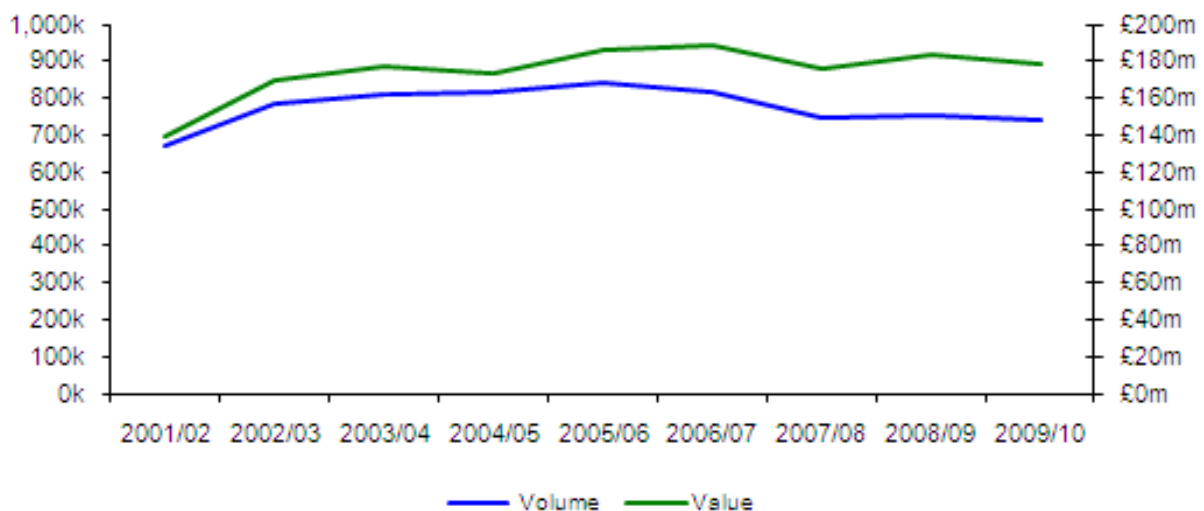
## Investigations

The table below provides a summary of volume and claim value of investigations claims for the period 2001/02 to 2009/10. It also provides a year on year percentage change in the figures. The Investigations volume and value include all police station claim codes.

Figure 1: Volume and Value of Investigations Claims 2001/02 to 2009/10

Year	Investigations Claims Volume	% Change	Investigations Claims Value	% Change	Savings
2001/02	672,904		£ 139,378,063		
2002/03	782,622	16%	£ 169,456,018	22%	
2003/04	811,540	4%	£ 177,127,395	5%	
2004/05	819,479	1%	£ 173,703,404	-2%	
2005/06	839,829	2%	£ 185,952,559	7%	
2006/07	818,330	-3%	£ 189,118,848	2%	
2007/08	749,155	-8%	£ 176,146,439	-7%	
2008/09	756,101	1%	£ 183,322,623	4%	£16m in cash terms due to introduction of fixed fees
2009/10	737,815	-2%	£ 178,232,330	-3%	£18m in cash terms due to introduction of fixed fees

Figure 2: Volume and Value of Investigations Claims 2001/02 to 2009/10



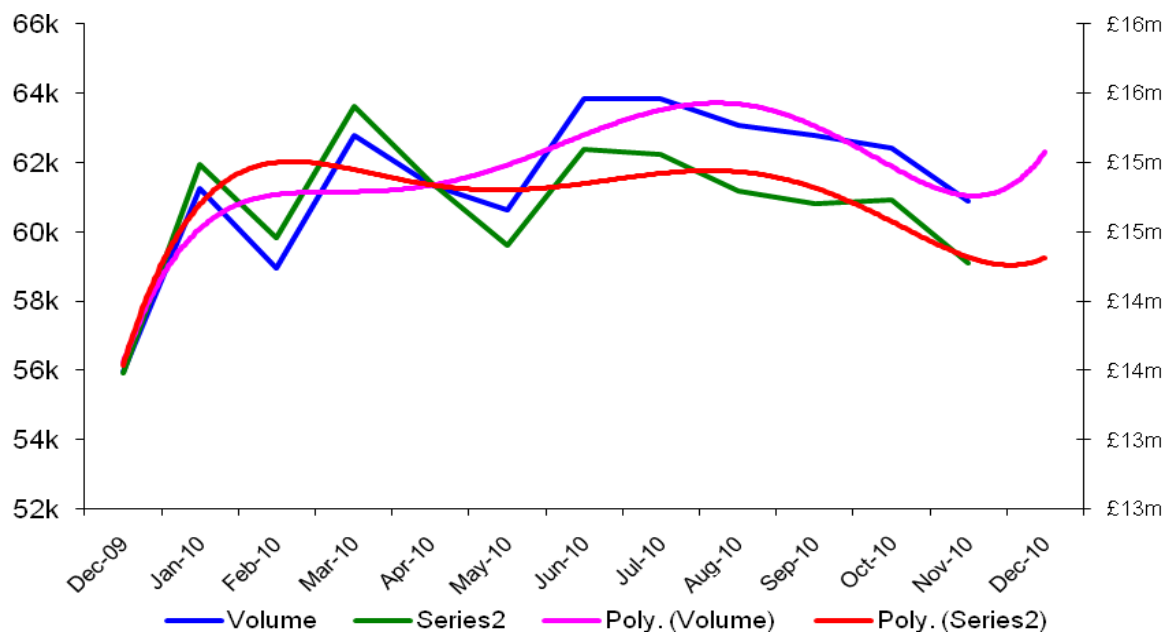
## Investigations claims by month

The table below provides a monthly summary of investigations claims volume and value for the period December 2009 to November 2010. It also shows the percentage change in comparison to the same month in the previous year. The Investigations by month volume and value include all police station claim codes.

Figure 3: Volume and Value of Investigations Claims by month

Month	Volume	Volume Previous Year	% Change	Value	Value Previous Year	% Change
Dec-09	55,948	51,878	7%	£13,476,996	£ 12,485,798	7%
Jan-10	61,235	68,430	-12%	£ 14,987,739	£ 16,317,553	-9%
Feb-10	58,963	60,654	-3%	£ 14,452,476	£ 14,546,521	-1%
Mar-10	62,792	64,241	-2%	£ 15,402,883	£ 15,383,309	0%
Apr-10	61,366	61,147	0%	£ 14,860,008	£14,675,732	1%
May-10	60,643	61,365	-1%	£ 14,400,486	£14,696,465	-2%
Jun-10	63,819	63,312	1%	£15,095,537	£15,176,243	-1%
Jul-10	63,831	64,769	-1%	£15,057,938	£15,544,087	-3%
Aug-10	63,063	61,183	3%	£14,792,402	£14,674,820	0.79%
Sep-10	62,751	63,437	-1%	£ 14,700,943	£15,264,231	-4%
Oct-10	62,411	63,456	-2%	£ 14,728,154	£15,237,751	-3%
Nov-10	60,875	60,588	0%	£14,272,269	£14,530,813	-2%

Figure 4: Volume and Value of Investigations Claims by month



## Criminal Defence Service (CDS) Direct

The tables below provide a monthly summary of CDS Direct cases volume and value for the financial year 2008/09 and for the period April 2008 to March 2010.

Figure 5: Volume and Value of CDS Direct Cases by month in FY 2009/10

<b>Month</b>	<b>Cases</b>	<b>Cost</b>
Apr-08	8698	£339,533
May-08	11,415	£348,712
Jun-08	11,404	£246,756
Jul-08	12,218	£263,352
Aug-08	12,010	£261,092
Sep-08	11,736	£251,745
Oct-08	11,864	£257,753
Nov-08	11,680	£257,571
Dec-08	10,806	£236,678
Jan-09	11,252	£249,713
Feb-09	10,052	£224,586
Mar-09	11,006	£245,680
<b>Totals</b>	<b>134,141</b>	<b>£3,183,171</b>

Figure 6: Volume and Value of CDS Direct Cases by month from April 10 to Sep 10

<b>Month</b>	<b>Cases</b>	<b>Cost</b>
Apr-10	10,964	£240,132.40
May-10	10,465	£230,351.90
Jun-10	10,306	£225,912.69
Jul-10	11,206	£246,550.28
Aug-10	10,658	£243,133.06
Sep-10	10,462	£230,231.20
<b>Totals</b>	<b>64,061</b>	<b>£1,416,312</b>

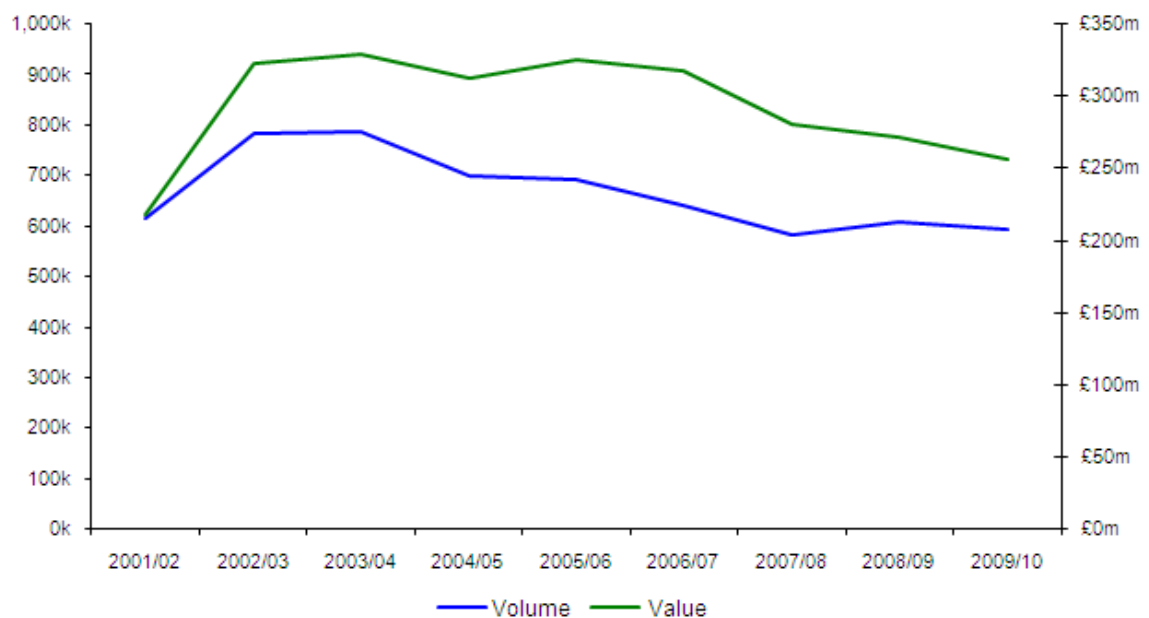
## Proceedings

The table below provides a summary of volume and claim value of Proceedings claims for the period 2001/02 to 2009/10. It also provides a year on year percentage change in the figures. The Proceedings volume and value include all Magistrates' Court claim codes.

Figure 7: Volume and Value of Proceedings Claims 2001/02 to 2009/10

Year	Proceedings Claims Volume	% Change	Proceedings Claims Value	% Change
2001/02	615,395		£217,319,875	
2002/03 <sup>1</sup>	783,495	27%	£322,099,577	48%
2003/04	784,911	0%	£328,352,681	2%
2004/05	697,966	-11%	£311,930,090	-5%
2005/06	692,154	-1%	£325,070,797	4%
2006/07 <sup>2</sup>	640,130	-8%	£317,380,026	-2%
2007/08	580,649	-9%	£279,846,466	-12%
2008/09	607,524	5%	£265,257,503	-5%
2009/10	593,606	-2%	£256,662,477	-3%

Figure 8: Volume and Value of Proceedings Claims 2001/02 to 2009/10



<sup>1</sup> Means testing abolished

<sup>2</sup> Means testing re-introduced

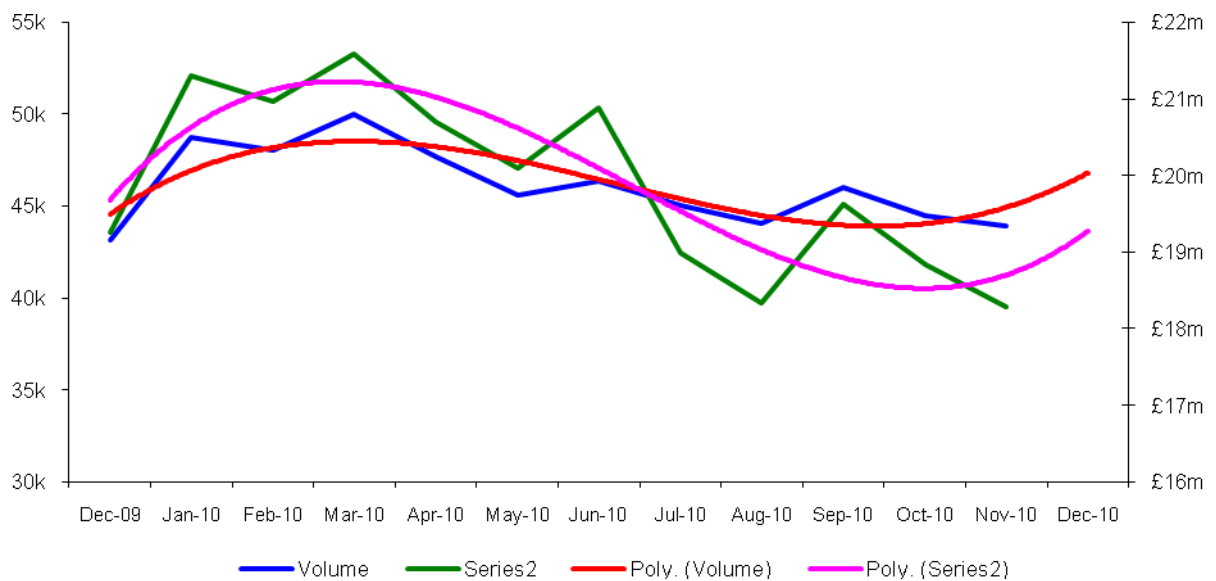
## Proceedings claims by month

The table below provides a monthly summary of Proceedings claims volume and value for the period November 2009 to December 2010. It also shows the percentage change in comparison to the same month in the previous year. The Proceedings volume and value by month include all Magistrates' Court claim codes.

Figure 9: Volume and Value of Proceedings Claims by month

Month	Volume	Volume Previous Year	% Change	Value	Value Previous Year	% Change
Dec-09	43,184	42,280	2%	£19,249,334	£ 18,976,767	1%
Jan-10	48,753	56,282	-15%	£ 21,015,151	£ 24,050,719	-14%
Feb-10	48,014	50,518	-5%	£20,959,396	£ 22,786,099	-9%
Mar-10	50,014	52,756	-5%	£21,584,393	£ 24,473,924	-13%
Apr-10	47,711	49,425	-4%	£ 20,704,783	£21,067,588	-2%
May-10	45,603	47,743	-5%	£ 20,090,670	£20,239,512	-1%
Jun-10	46,384	51,713	-11%	£ 20,875,129	£22,352,697	-7%
Jul-10	45,045	53,397	-19%	£ 18,987,672	£23,018,229	-21%
Aug-10	44,034	48,388	-10%	£ 18,330,392	£20,420,848	-11%
Sep-10	46,027	52,008	-13%	£ 19,622,675	£22,364,167	-14%
Oct-10	44,510	52,192	-17%	£ 18,844,764	£22,589,000	-20%
Nov-10	43,892	48,900	-11%	£18,276,164	£21,393,711	-17%

Figure 10: Volume and Value of Proceedings Claims by month



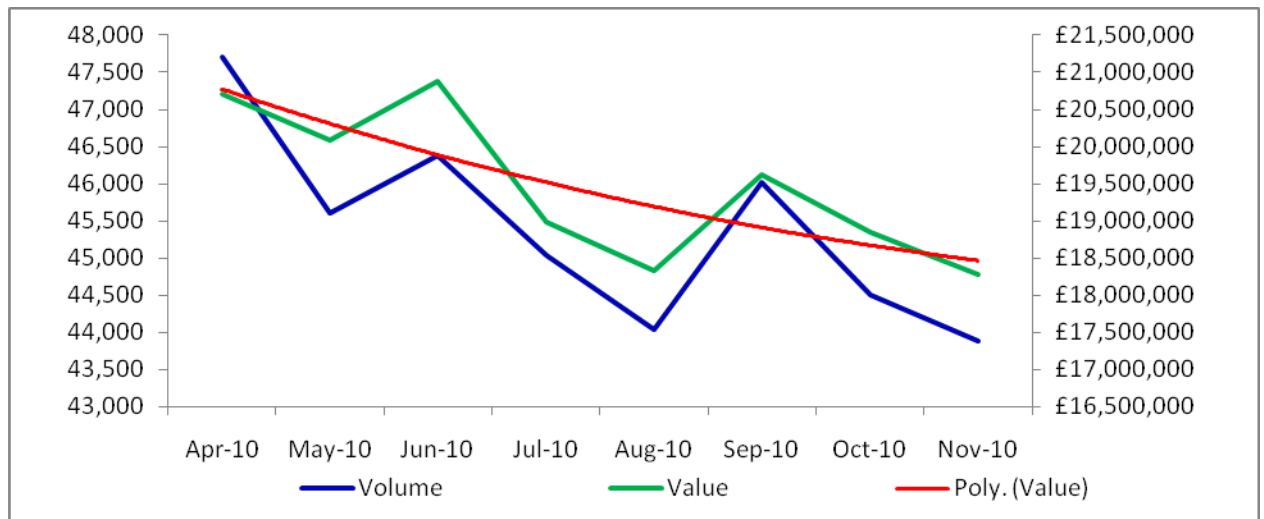
## Proceedings claims by month (FY 2010/11)

The table below provides a monthly summary of Proceedings claims volume and value for the period April to September 2010. It also shows the percentage change in comparison to the previous month. The Proceedings volume and value by month include all Magistrates' Court claim codes.

Figure 11: Volume and Value of Proceedings Claims by month compared to previous month

Month	Volume	% Change compared to previous month	Value	% Change compared to previous month
Apr-10	47,711		£20,704,783	
May-10	45,603	-4%	£20,090,670	-3%
Jun-10	46,384	2%	£20,875,129	4%
Jul-10	45,045	-3%	£18,987,672	-9%
Aug-10	44,034	-2%	£18,330,392	-3%
Sep-10	46,027	5%	£19,622,675	7%
Oct-10	44,510	-3%	£18,844,764	-4%
Nov-10	43,892	-1%	£ 18,276,164	-3%

Figure 12: Volume and Value of Proceedings Claims by month compared to previous month



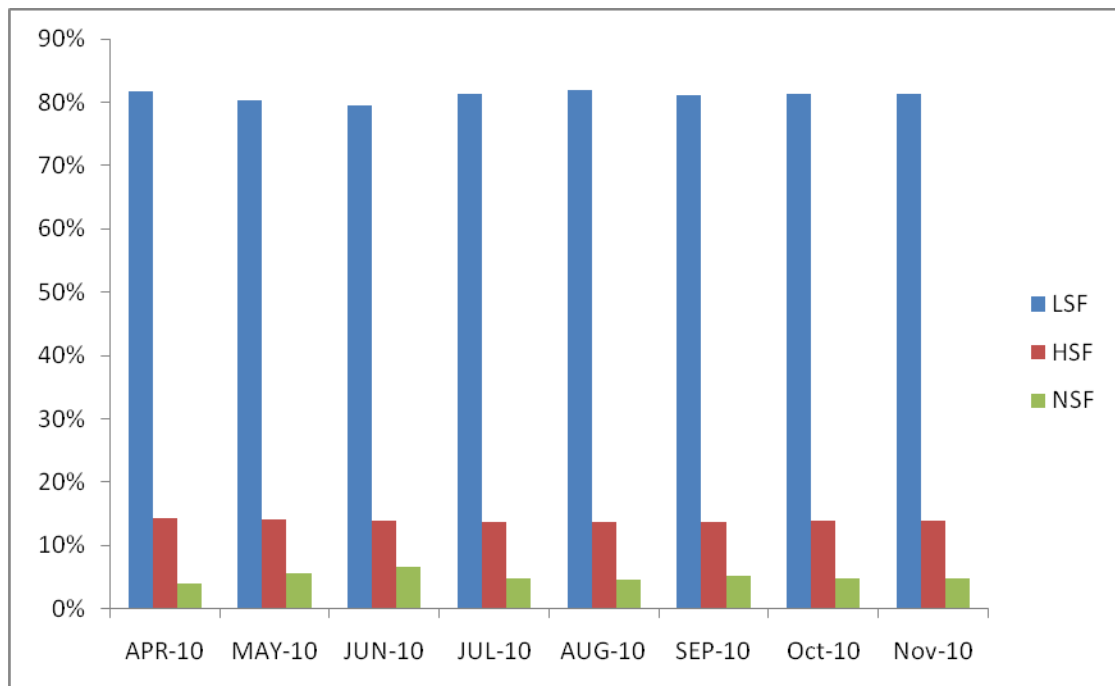
## Proceedings claims by month- Percentage breakdown by fee type

The table below provides a percentage breakdown by fee type of Proceedings claims volumes for the period April to November 2010. In this period, on average 81% of the total proceedings claim volumes consisted of Lower Standard Fee (LSF) Claims.

Figure 13: Proceedings claims volume by month-% breakdown by fee type

Submission Month	LSF	HSF	NSF
APR-10	82%	14%	4%
MAY-10	80%	14%	6%
JUN-10	80%	14%	7%
JUL-10	81%	14%	5%
AUG-10	82%	14%	5%
SEP-10	81%	14%	5%
OCT-10	81%	14%	5%
NOV-10	81%	14%	5%

Figure 14: Proceedings claims volume by month-% breakdown by fee type



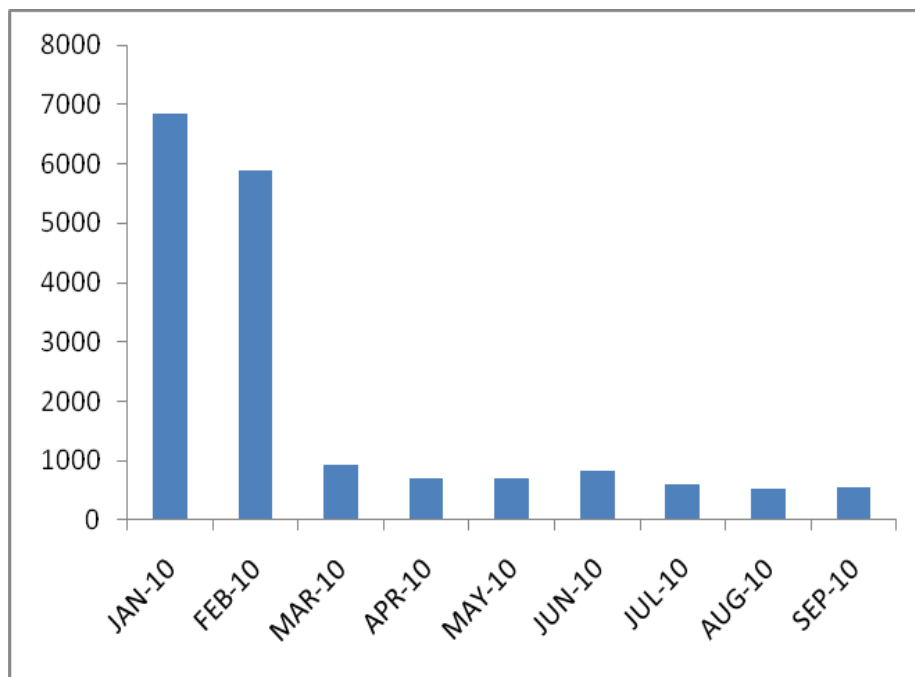
## Committals claims by month

The table below provides the total number of claims for committals work as a percentage of all magistrates' court standard fee work from January 2010 to September 2010.

Figure 15: Committals claim volumes by month

<b>Submission Month</b>	<b>All standard fee claims</b>	<b>Committals only standard fee claims</b>	<b>% of committals only claims out of total standard fee claims</b>
Jan-10	40,432	6850	17%
Feb-10	40,137	5898	15%
Mar-10	41,557	920	2%
Apr-10	39,775	713	2%
May-10	37,677	709	2%
Jun-10	38,123	834	2%
Jul-10	36,830	604	2%
Aug-10	35,724	519	1%
Sep-10	37,582	542	1%

Figure 16: Committals claim volumes by month



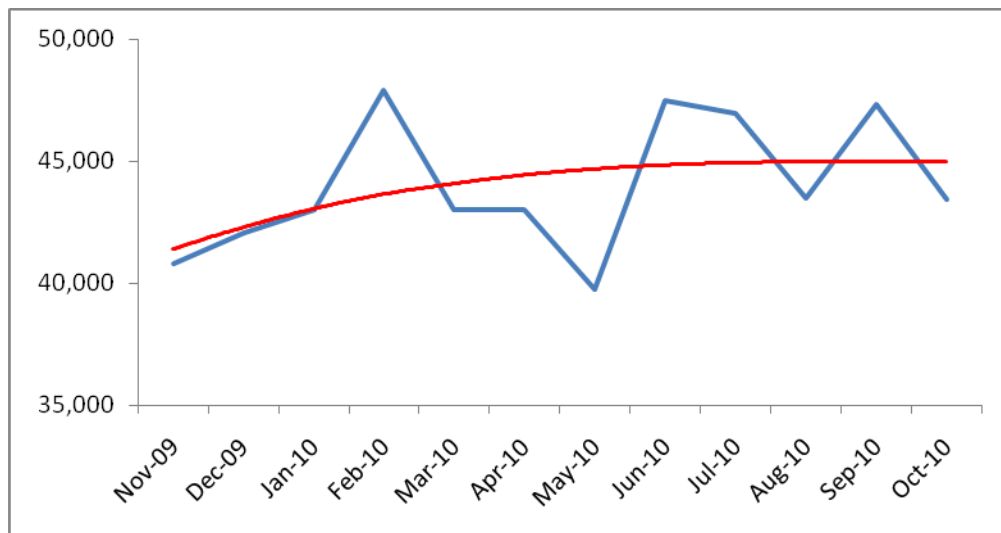
## Magistrates' Courts Means Assessment Test -MAAT Figures

The table below provides a summary of the Magistrates' Courts Means Test Performance Report. It also provides a month by month percentage change in the number of grants.

Figure 17: Means Assessment and Appeals Tool (MAAT) Grants by month

Month	Grants	% Change
<b>Oct-09</b>	46,971	
<b>Nov-09</b>	45,627	-3%
<b>Dec-09</b>	40,786	-11%
<b>Jan-10</b>	42,067	3%
<b>Feb-10</b>	42,998	2%
<b>Mar-10</b>	47,911	11%
<b>Apr-10</b>	43,028	-10%
<b>May-10</b>	39,788	-8%
<b>Jun-10</b>	47,508	19%
<b>Jul-10</b>	47,062	-1%
<b>Aug-10</b>	43,597	-7%
<b>Sep-10</b>	47,639	9%
<b>Oct-10</b>	43,439	-9%

Figure 18: Means Assessment and Appeals Tool (MAAT) Grants by month



The table below provides a summary of volume and claim value of Prison Law claims for the period 2006/07 to 2009/10. It also provides a year on year percentage change in the figures. The Prison Law volume and value include all Prison Law claim codes.

Figure 19: Volume and Value of Prison Law claims 2006/07 to 2009/10

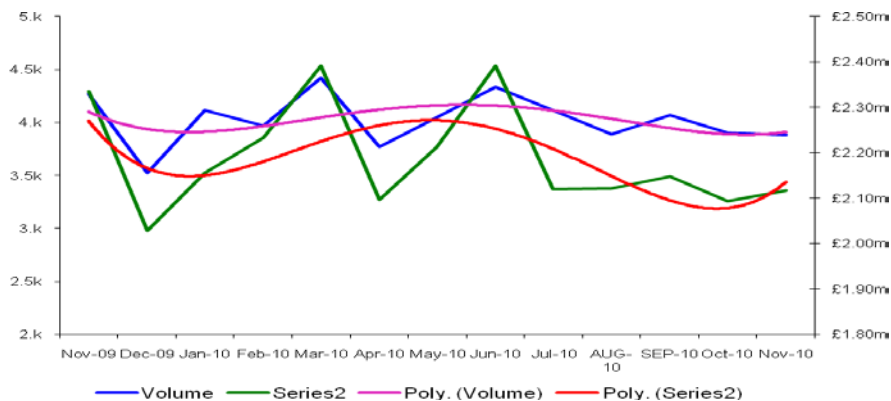
Year	Prison Law Claims Volume	% Change	Prison Law Claims Value	% Change
2006/07	26,687		£ 12,459,624	
2007/08	33,108	24%	£ 16,292,130	31%
2008/09	43,029	30%	£ 21,620,867	33%
2009/10	48,040	12%	£ 25,184,978	16%

The table below provides a monthly summary of Prison Law claims volume and value for the period August 2009 to July 2010.

Figure 20: Volume and Value of Prison Law claims by month

Month	Prison Law Claims Volume	Prison Law Claims Value
Dec-09	3,527	£2,028,253
Jan-10	4113	£2,155,209
Feb-10	3966	£2,233,832
Mar-10	4419	£2,391,068
Apr-10	3770	£2,095,980
May-10	4048	£2,213,016
Jun-10	4,335	£2,391,219
Jul-10	4,118	£2,119,715
Aug-10	3,886	£2,121,246
Sep-10	4,068	£2,148,586
Oct-10	3,903	£2,092,929
Nov-10	3,880	£2,116,365

Figure 21: Volume and Value of Prison Law claims by month

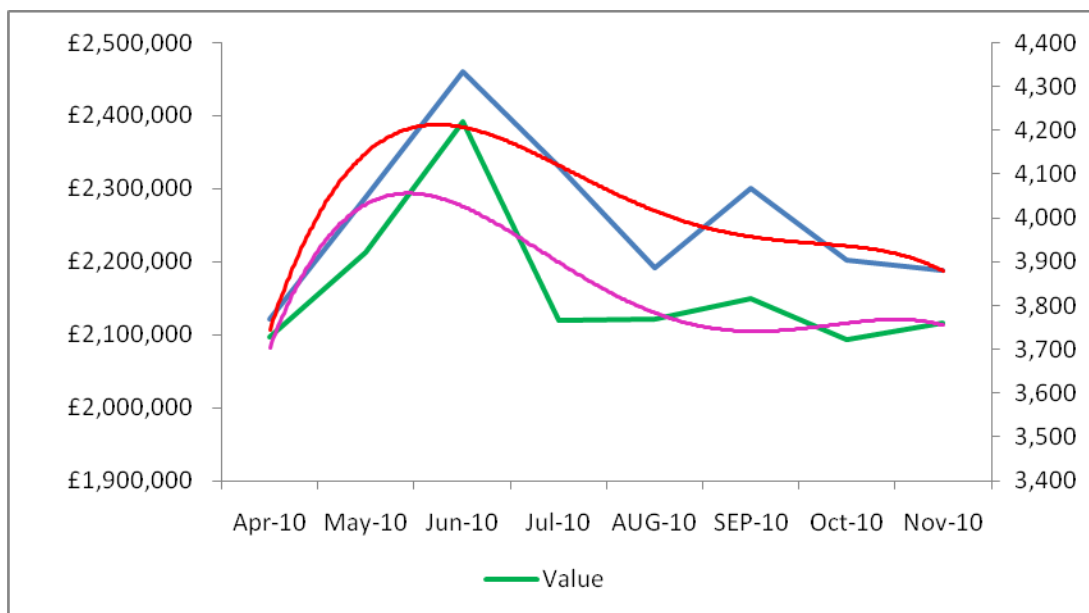


## Prison Law- Claims current financial year

Figure 22: Volume and Value of Prison Law claims April 10 to September 2010

Type of Work	Month	Volume	Volume Previous Year	% Change	Value	Value Previous Year	% Change
Prison Law	Apr-10	3770	3,716	1%	£2,095,980	£1,785,540	15%
Prison Law	May-10	4048	3,754	7%	£2,213,016	£1,824,676	18%
Prison Law	Jun-10	4,335	3,717	14%	£2,391,219	£2,002,501	16%
Prison Law	Jul-10	4,118	4,259	-3%	£ 2,119,715	£2,067,851	2%
Prison Law	AUG-10	3,886	3,987	-3%	£2,121,246	£2,044,932	4%
Prison Law	SEP-10	4,068	4,039	1%	£ 2,148,586	£2,111,627	2%
Prison Law	OCT-10	3,903	4,286	-10%	£ 2,092,929	£2,224,510	-6%
Prison Law	Nov-10	3,880	4,265	-10%	£2,116,365	£2,334,847	-10%

Figure 23: Volume and Value of Prison Law claims April 10 to November 2010



## Prison Law by month and claim code

The table below provides the percentage breakdown by claim code of Prison Law claim volumes for the period August 2009 to September 2010.

Figure 24: Percentage breakdown of prison law claims volume by claim code

<b>Submission Month</b>	<b>PRIA</b> Free standing advice and assistance	<b>PRIB</b> Advocacy assistance at prison discipline hearings	<b>PRIC</b> Advocacy assistance at parole board hearings
Dec-09	81%	11%	7%
Jan-10	80%	12%	8%
Feb-10	80%	12%	7%
Mar-10	83%	10%	7%
Apr-10	82%	11%	7%
May-10	83%	10%	7%
Jun-10	83%	9%	8%
Jul-10	84%	10%	6%
Aug-10	83%	10%	7%
Sep-10	83%	10%	7%
Oct-10	84%	9%	7%
Nov-10	83%	10%	7%

Figure 25: Percentage breakdown of prison law claims volume by claim code

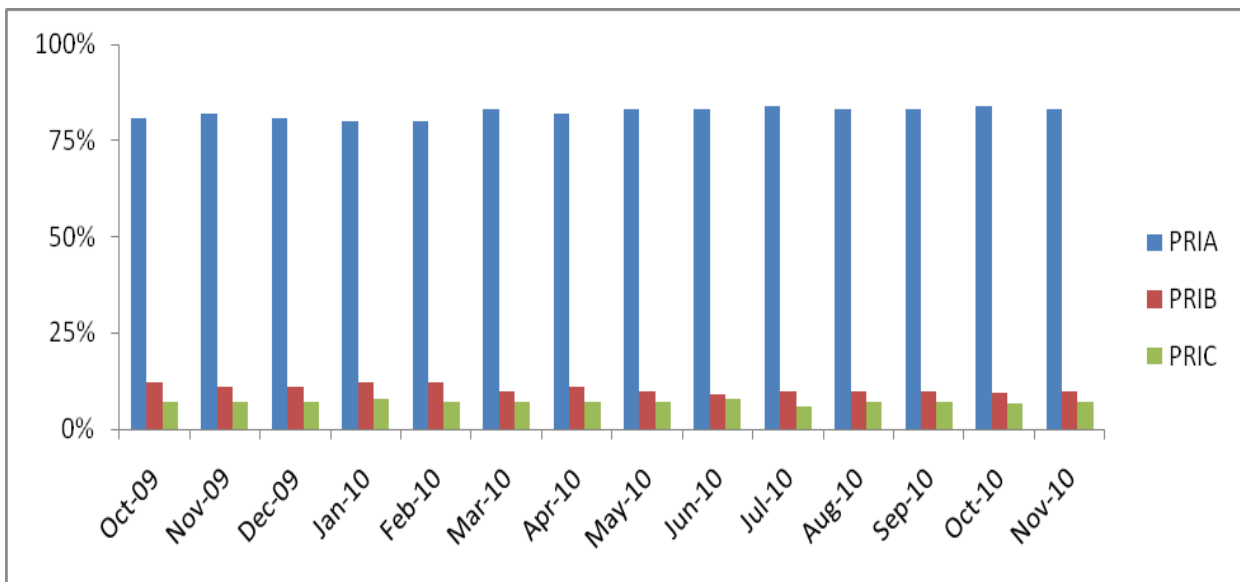
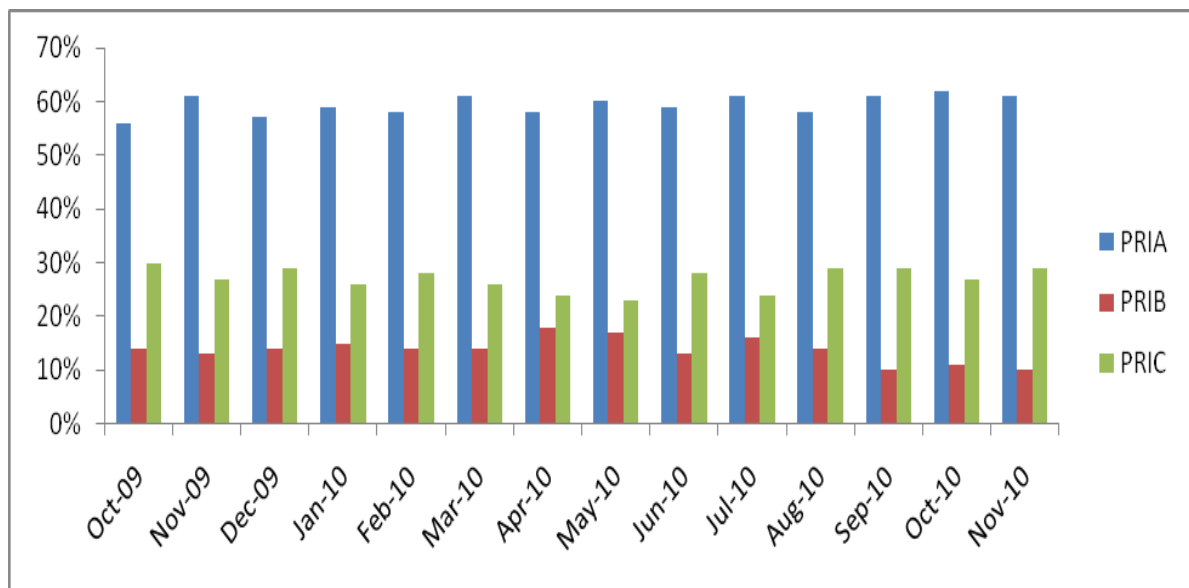


Figure 26: Percentage breakdown of prison law claims value by claim code

<b>Submission Month</b>	<b>PRIA</b> Free standing advice and assistance	<b>PRIB</b> Advocacy assistance at prison discipline hearings	<b>PRIC</b> Advocacy assistance at parole board hearings
Dec-09	57%	14%	29%
Jan-10	59%	15%	26%
Feb-10	58%	14%	28%
Mar-10	61%	14%	26%
Apr-10	58%	18%	24%
May-10	60%	17%	23%
Jun-10	59%	13%	28%
Jul-10	61%	16%	24%
Aug-10	58%	14%	29%
Sep-10	61%	10%	29%
Oct-10	62%	11%	27%
Nov-10	61%	10%	29%

Figure 27: Percentage breakdown of prison law claims value by claim code



## Total lower crime

The table below provides a summary of total lower crime volume and value for the period 2006/07 to 2008/09. It's the cumulative total of Investigations, Proceedings and Prison Law claims which have been provided above. It also provides a year on year percentage change in the figures.

Figure 28: Volume and Value of Lower Crime claims 2001/02 to 2009/10

Year	Lower Crime Claims Volume	% Change	Lower Crime Claims Value	% Change
2001/02	1,451,776		£ 433,762,785	
2002/03	1,590,185	10%	£ 505,330,827	16%
2003/04	1,617,205	2%	£ 515,845,372	2%
2004/05	1,539,304	-5%	£ 492,378,969	-5%
2005/06	1,616,508	5%	£ 500,653,760	2%
2006/07	1,485,147	-2%	£ 518,958,498	4%
2007/08	1,362,912	-8%	£ 472,285,036	-9%
2008/09	1,406,654	6%	£ 470,200,992	-0.44%
2009/10	1,379,461	-2%	£460,079,785	-2%

Figure 29: Volume and Value of Lower Crime claims 2001/02 to 2009/10



## Crime Lower SMPs only

The table below provides a summary of lower crime SMP values for FY 2009/10 and for the period April to September 2010. The values do not include CDS Direct, DSCC & PDS payments.

Figure 30: Crime Lower SMPs

	Apr	May	Jun	Jul	Aug	Sep	Oct	Nov	Dec	Jan	Feb	Mar	Total
<b>2010/11</b>	38,189	39,372	39,604	38,903	38,460	37,942	37,834						£233m
<b>2009/10</b>	39,026	51,950	36,668	35,551	36,097	36,302	36,352	36,477	37,318	37,360	38,082	38,255	£460m