



Crime Contracts Consultative Group (CCCG)

Volume and Value figures report

July 2011

Table of Contents

Investigations	1
Investigations claims by month	2
Criminal Defence Service (CDS) Direct	3
Proceedings	4
Proceedings claims by month	5
Magistrates' Courts Means Assessment Test -MAAT Figures	9
Prison Law	10
Prison Law by month and claim code	12
Total lower crime	13
Investigations claims by scheme	14

Investigations

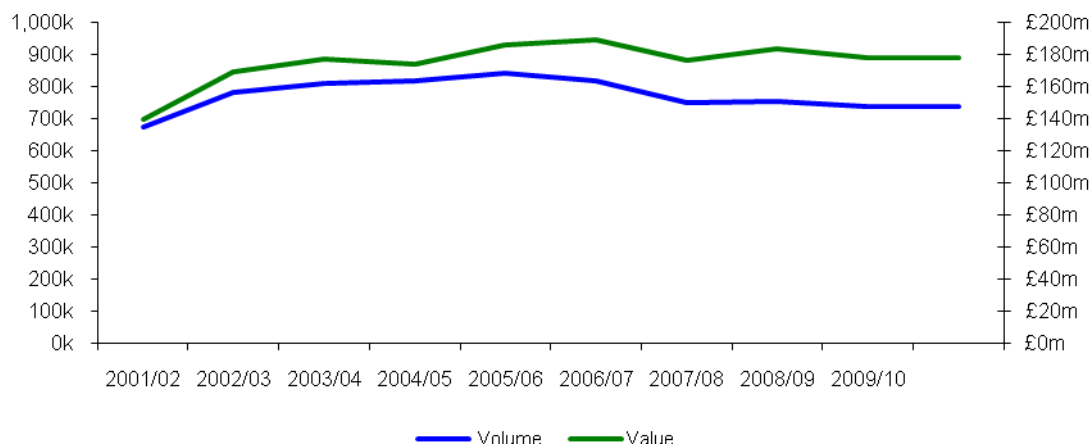
The table below provides a summary of volume and claim value of investigations claims for the period 2001/02 to 2010/11. It also provides a year on year percentage change in the figures. The Investigations volume and value include all police station claim codes.

Investigations volume and value flat in Mar 2010/11, data shows trend in period going forward to be steady.

Figure 1: Volume and Value of Investigations Claims 2001/02 to 2010/11

Year	Investigations Claims Volume	% Change	Investigations Claims Value	% Change	Savings
2001/02	672,904		£ 139,378,063		
2002/03	782,622	16%	£ 169,456,018	22%	
2003/04	811,540	4%	£ 177,127,395	5%	
2004/05	819,479	1%	£ 173,703,404	-2%	
2005/06	839,829	2%	£ 185,952,559	7%	
2006/07	818,330	-3%	£ 189,118,848	2%	
2007/08	749,155	-8%	£ 176,146,439	-7%	
2008/09	756,101	1%	£ 183,322,623	4%	£16m in cash terms due to introduction of fixed fees
2009/10	737,815	-2%	£ 178,232,330	-3%	£18m in cash terms due to introduction of fixed fees
2010/11	737,618	-0.03%	£178,157,458	-0.04%	

Figure 2: Volume and Value of Investigations Claims 2001/02 to 2010/11



Investigations claims by month

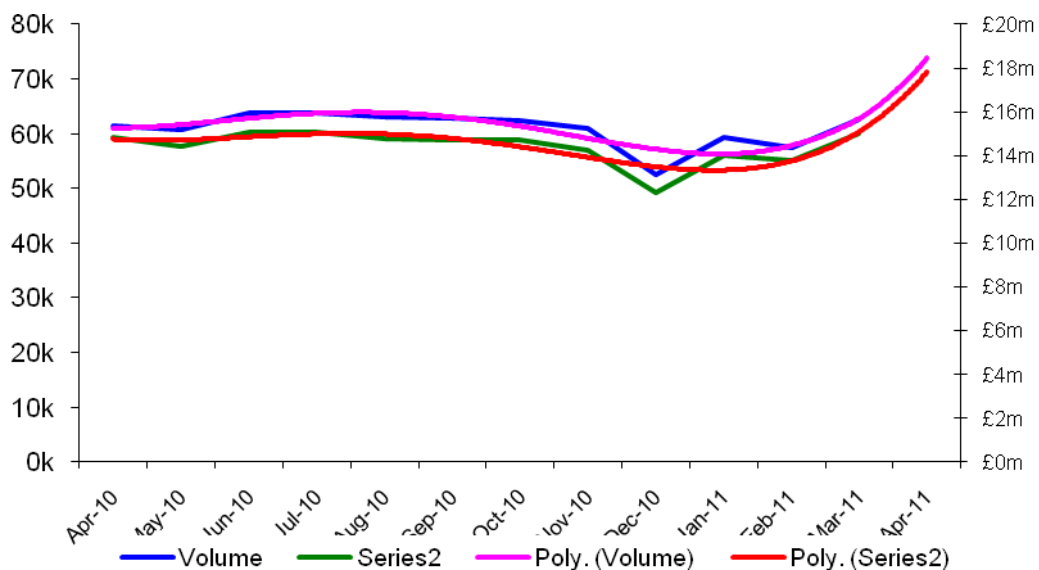
The table below provides a monthly summary of investigations claims volume and value for the period March 2010 to March 2011. It also shows the percentage change in comparison to the same month in the previous year. The Investigations by month volume and value include all police station claim codes.

Volume and value flat in Mar 11, data shows upward trend in period going forward

Figure 3: Volume and Value of Investigations Claims by month

Month	Volume	Volume Previous Year	% Change	Value	Value Previous Year	% Change
Apr-10	61,366	61,147	0%	£ 14,860,008	£14,675,732	1%
May-10	60,643	61,365	-1%	£ 14,400,486	£14,696,465	-2%
Jun-10	63,819	63,312	1%	£15,095,537	£15,176,243	-1%
Jul-10	63,831	64,769	-1%	£15,057,938	£15,544,087	-3%
Aug-10	63,063	61,183	3%	£14,792,402	£14,674,820	0.79%
Sep-10	62,751	63,437	-1%	£ 14,700,943	£15,264,231	-4%
Oct-10	62,411	63,456	-2%	£ 14,728,154	£15,237,751	-3%
Nov-10	60,875	60,588	0%	£14,272,269	£14,530,813	-2%
Dec-10	52,569	55,948	-6%	£12,337,355	£13,476,996	-9%
Jan-11	59,302	61,235	-3%	£14,023,191	£14,987,739	-7%
Feb-11	57,523	58,963	-3%	£13,796,182	£14,452,476	-5%
Mar-11	62,604	62,792	-0.30%	£15,006,998	£ 14,987,739	0.13%

Figure 4: Volume and Value of Investigations Claims by month



Criminal Defence Service (CDS) Direct

The tables below provide a monthly summary of CDS Direct cases volume and value for the financial year 2008/09 and for the period April 2009 to March 2010.

Figure 5: Volume and Value of CDS Direct Cases by month in FY 2009/10

Month	Cases	Cost
Apr-09	10,380	£228,793.85
May-09	10,944	£241,263.68
Jun-09	10,712	£235,963.16
Jul-09	11,195	£253,835.27
Aug-09	10,929	£240,957.10
Sep-09	10,484	£230,800.77
Oct-09	11,217	£246,651.04
Nov-09	10,580	£241,229.36
Dec-09	10,040	£221,484.07
Jan-10	10,421	£229,311.80
Feb-10	9,600	£210,533.97
Mar-10	10,466	£240,378.74
Totals	126,968	2,821,202.81

Figure 6: Volume and Value of CDS Direct Cases by month from April 10 to March 2011

Month	Cases	Cost
Apr-10	10,964	£240,132.40
May-10	10,465	£230,351.90
Jun-10	10,306	£225,912.69
Jul-10	11,206	£246,550.28
Aug-10	10,658	£243,133.06
Sep-10	10,462	£230,231.20
Oct-10	10,491	£231,320.79
Nov-10	10,079	£221,480.17
Dec-10	9,411	£213,569.45
Jan-11	10,408	£235,411.65
Feb-11	9,368	£205,410.75
Mar-11	9,922	£221,275.87
Totals	124,023	£2,743,770.21

Magistrates' Courts Means Assessment Test -MAAT Figures

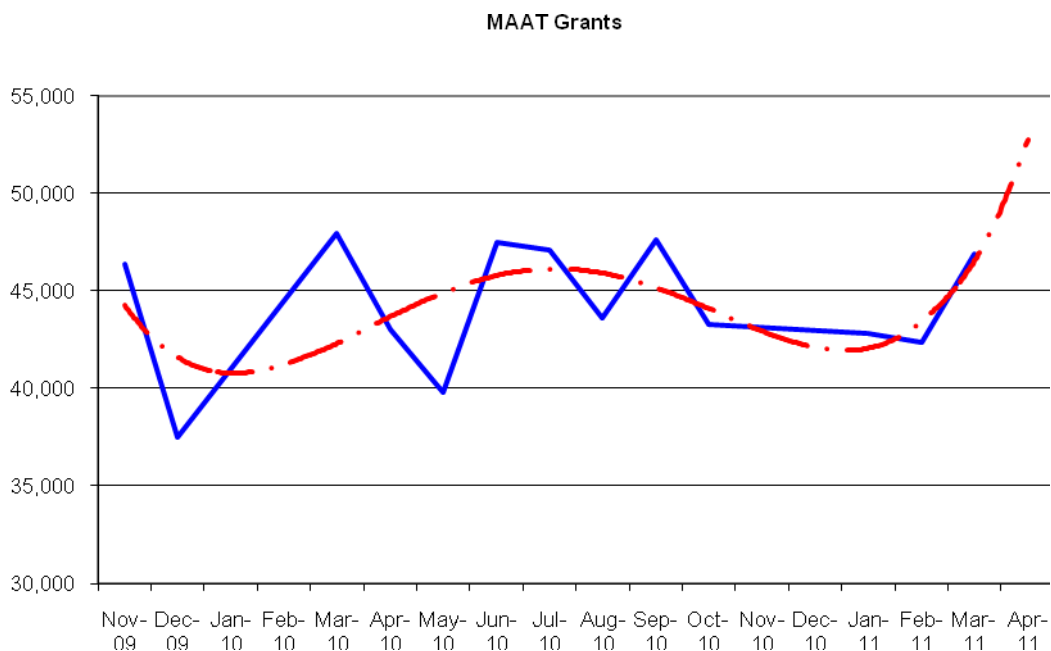
The table below provides a summary of the Magistrates' Courts Means Test Performance Report. It also provides a month by month percentage change in the number of grants.

In Mar 2011, 81% of the total proceedings claim volumes consisted of Lower Standard Fee (LSF) Claims, 14% Higher Standard Fee (LSF) Claims and 5% Non Standard Fee Claims (NSF).

Figure 15: Means Assessment and Appeals Tool (MAAT) Grants by month

Month	Grants	% Change
Mar-10	47,911	11%
Apr-10	43,028	-10%
May-10	39,788	-8%
Jun-10	47,508	19%
Jul-10	47,062	-1%
Aug-10	43,597	-7%
Sep-10	47,639	9%
Oct-10	43,266	-9%
Nov-09	46,383	-1%
Dec-09	37,503	-19%
Jan-11	42,823	14%
Feb-11	42,376	-1%
Mar-11	46,914	11%

Figure 16: Means Assessment and Appeals Tool (MAAT) Grants by month



Proceedings

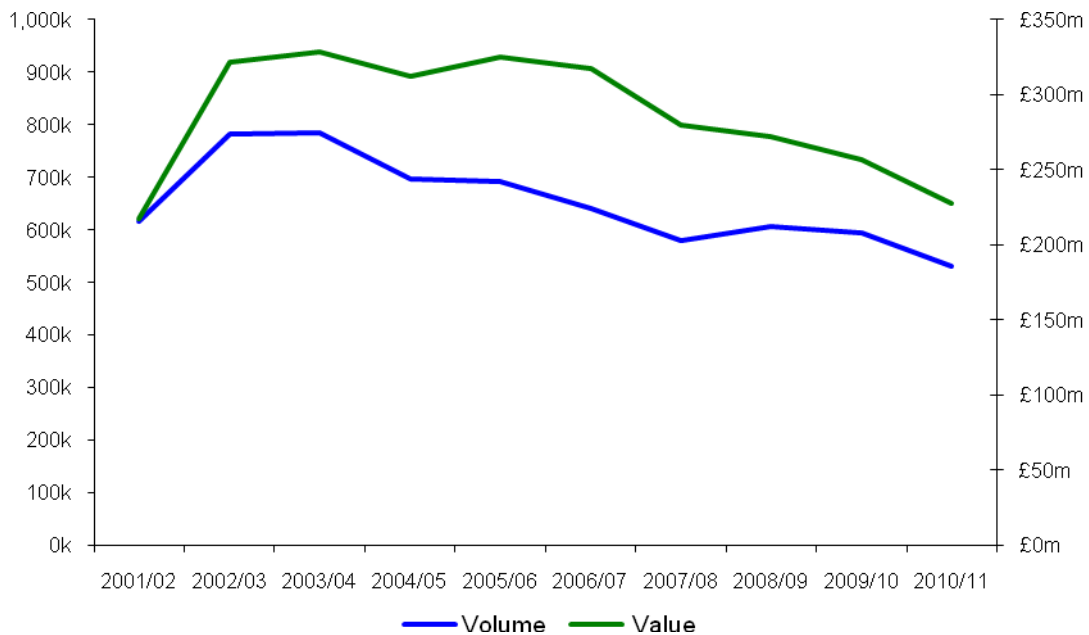
The table below provides a summary of volume and claim value of Proceedings claims for the period 2001/02 to 2010/11. It also provides a year on year percentage change in the figures. The Proceedings volume and value include all Magistrates' Court claim codes.

Volume and value dropped by 11% in 2010/11

Figure 7: Volume and Value of Proceedings Claims 2001/02 to 2010/11

Year	Proceedings Claims Volume	% Change	Proceedings Claims Value	% Change
2001/02	615,395		£217,319,875	
2002/03 ¹	783,495	27%	£322,099,577	48%
2003/04	784,911	0%	£328,352,681	2%
2004/05	697,966	-11%	£311,930,090	-5%
2005/06	692,154	-1%	£325,070,797	4%
2006/07 ²	640,130	-8%	£317,380,026	-2%
2007/08	580,649	-9%	£279,846,466	-12%
2008/09	607,524	5%	£265,257,503	-5%
2009/10	593,606	-2%	£256,662,477	-3%
2010/11	531,212	-11%	£227,847,947	-11%

Figure 8: Volume and Value of Proceedings Claims 2001/02 to 2010/11



¹ Means testing abolished

² Means testing re-introduced

Proceedings claims by month

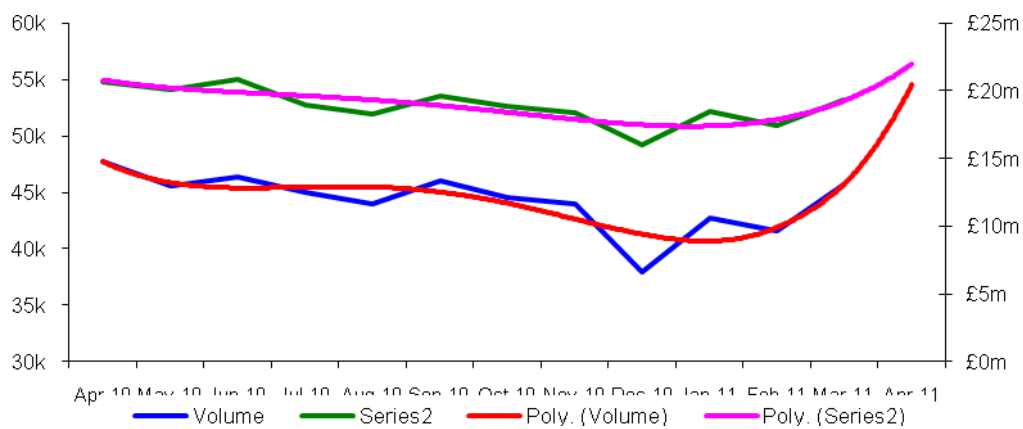
The table below provides a monthly summary of Proceedings claims volume and value for the period April 2010 to March 2011. It also shows the percentage change in comparison to the same month in the previous year. The Proceedings volume and value by month include all Magistrates' Court claim codes.

There was a drop in volume (10%) and value (11%) in Mar 2011 compared to Mar 2010.

Figure 9: Volume and Value of Proceedings Claims by month

Month	Volume	Volume Previous Year	% Change	Value	Value Previous Year	% Change
Apr-10	47,711	49,425	-4%	£ 20,704,783	£21,067,588	-2%
May-10	45,603	47,743	-5%	£ 20,090,670	£20,239,512	-1%
Jun-10	46,384	51,713	-11%	£ 20,875,129	£22,352,697	-7%
Jul-10	45,045	53,397	-19%	£ 18,987,672	£23,018,229	-21%
Aug-10	44,034	48,388	-10%	£ 18,330,392	£20,420,848	-11%
Sep-10	46,027	52,008	-13%	£ 19,622,675	£22,364,167	-14%
Oct-10	44,510	52,192	-17%	£ 18,844,764	£22,589,000	-20%
Nov-10	43,892	48,900	-11%	£18,276,164	£21,393,711	-17%
Dec-10	37,903	43,184	-14%	£16,034,547	£19,249,334	-20%
Jan-11	42,780	48748	-14%	18,451,829	£21,301,621	-15%
Feb-11	41,631	48017	-15%	£17,481,602	£20,968,386	-20%
Mar-11	45,650	50013	-10%	19,370,823	£ 21,592,913	-11%

Figure 10: Volume and Value of Proceedings Claims by month



Proceedings claims by month (FY 2010/11)

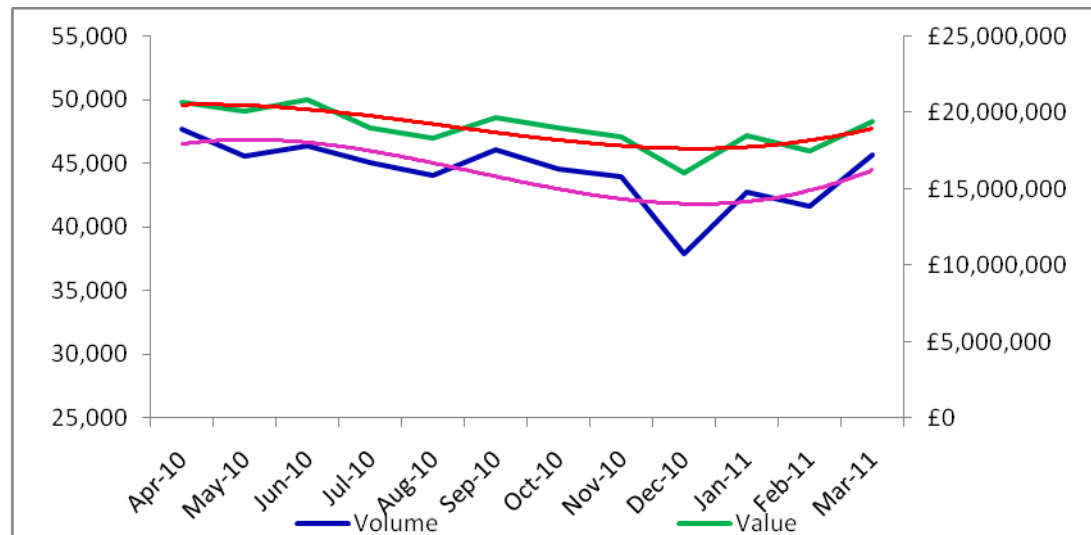
The table below provides a monthly summary of Proceedings claims volume and value for the period April 2010 to March 2011. It also shows the percentage change in comparison to the previous month. The Proceedings volume and value by month include all Magistrates' Court claim codes.

There was a rise in volume (10%) and value (11%) in Mar 2011 compared to Feb 2011

Figure 11: Volume and Value of Proceedings Claims by month compared to previous month

Month	Volume	% Change compared to previous month	Value	% Change compared to previous month
Apr-10	47,711		£20,704,783	
May-10	45,603	-4%	£20,090,670	-3%
Jun-10	46,384	2%	£20,875,129	4%
Jul-10	45,045	-3%	£18,987,672	-9%
Aug-10	44,034	-2%	£18,330,392	-3%
Sep-10	46,027	5%	£19,622,675	7%
Oct-10	44,574	-3%	18,963,754	-3%
Nov-10	43,936	-1%	18,358,119	-3%
Dec-10	37,903	-14%	16,034,547	-13%
Jan-11	42,780	13%	18,451,829	15%
Feb-11	41,631	-3%	17,481,602	-5%
Mar-11	45,650	10%	19,370,823	11%

Figure 12: Volume and Value of Proceedings Claims by month compared to previous month



Proceedings claims by month- Percentage breakdown by fee type

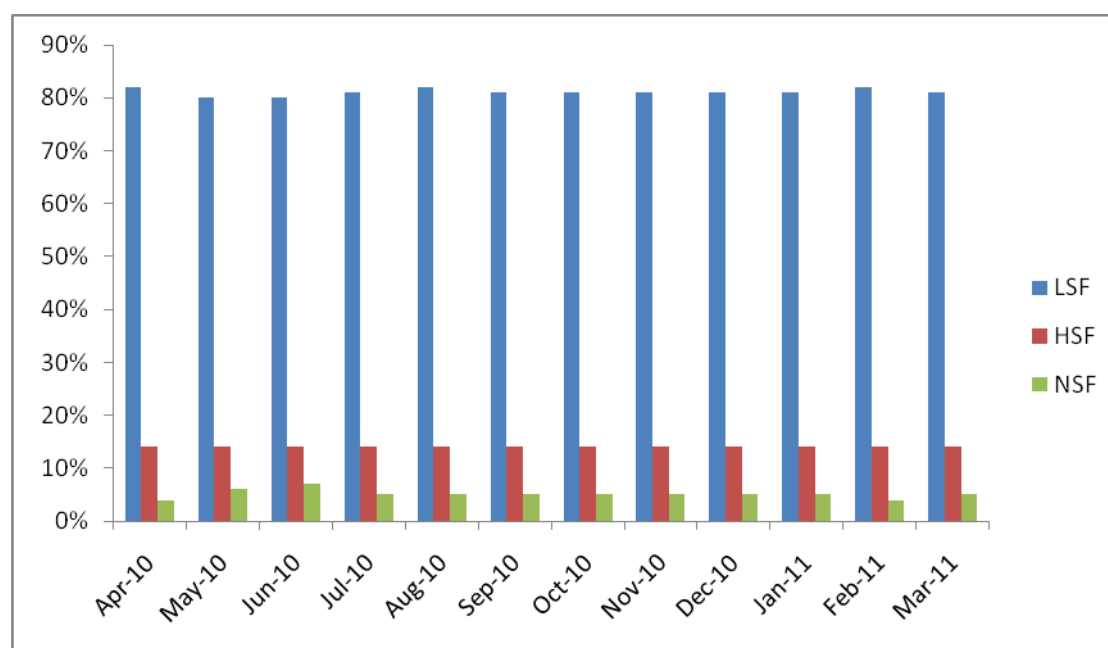
The table below provides a percentage breakdown by fee type of Proceedings claims volumes for the period April to March 2011.

In Mar 2011, 81% of the total proceedings claim volumes consisted of Lower Standard Fee (LSF) Claims, 14% Higher Standard Fee (LSF) Claims and 5% Non Standard Fee Claims (NSF).

Figure 13: Proceedings claims volume by month-% breakdown by fee type

Submission Month	LSF	HSF	NSF
APR-10	82%	14%	4%
MAY-10	80%	14%	6%
JUN-10	80%	14%	7%
JUL-10	81%	14%	5%
AUG-10	82%	14%	5%
SEP-10	81%	14%	5%
Oct-10	81%	14%	5%
Nov-10	81%	14%	5%
Dec-10	81%	14%	5%
Jan-11	81%	14%	5%
Feb-11	82%	14%	4%
Mar-11	81%	14%	5%

Figure 14: Proceedings claims volume by month-% breakdown by fee type



Prison Law

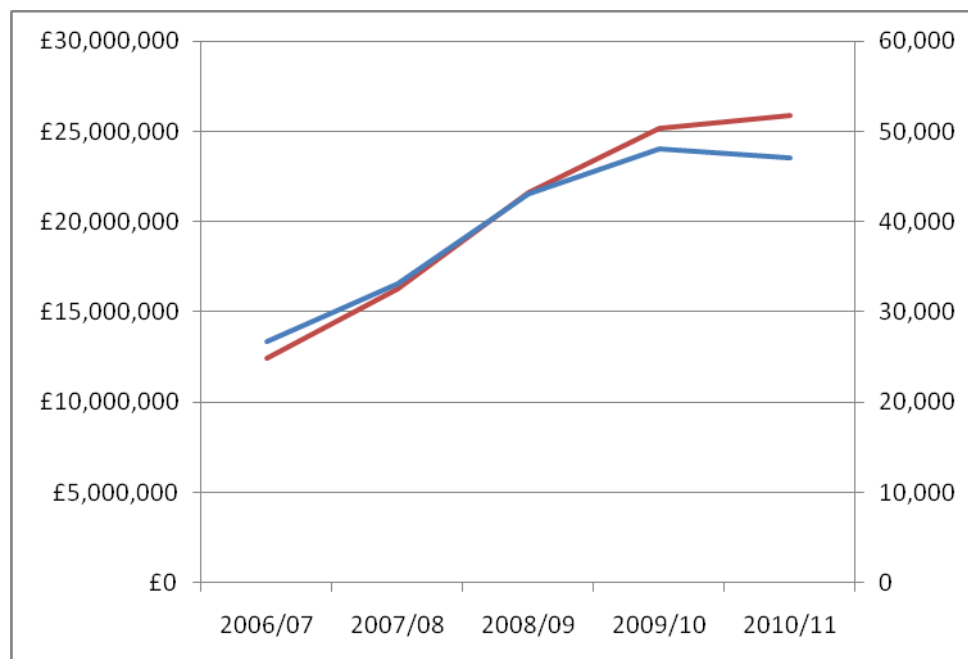
The table below provides a summary of volume and claim value of Prison Law claims for the period 2006/07 to 2010/11. It also provides a year on year percentage change in the figures. The Prison Law volume and value include all Prison Law claim codes.

There was a drop in volume (2%) and rise in value (3%) in Mar 2011 compared to Mar 2010.

Figure 17: Volume and Value of Prison Law claims 2006/07 to 2010/11

Year	Prison Law Claims Volume	% Change	Prison Law Claims Value	% Change
2006/07	26,687		£ 12,459,624	
2007/08	33,108	24%	£ 16,292,130	31%
2008/09	43,029	30%	£ 21,620,867	33%
2009/10	48,040	12%	£ 25,184,978	16%
2010/11	47,026	-2%	£ 25,891,097	3%

Figure 18: Volume and Value of Prison Law claims 2006/07 to 2010/11

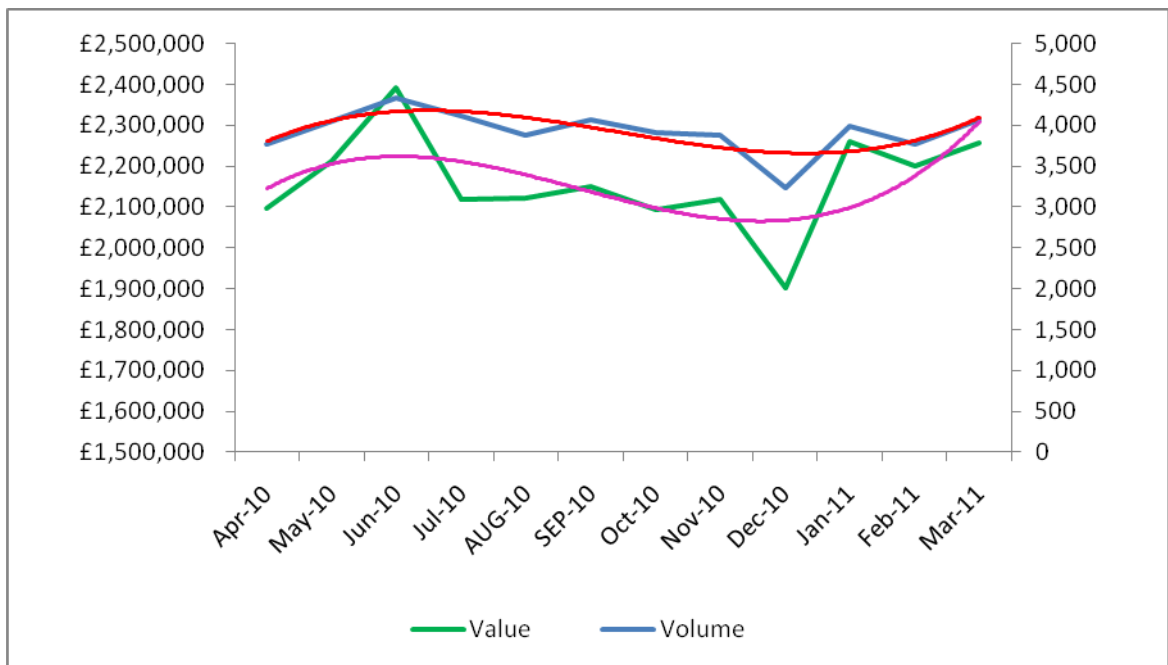


The table below provides a monthly summary of Prison Law claims volume and value for the period April 2010 to March 2011.

Figure 19: Volume and Value of Prison Law claims by month

Month	Prison Law Claims Volume	Prison Law Claims Value
Apr-10	3770	£2,095,980
May-10	4048	£2,213,016
Jun-10	4,335	£2,391,219
Jul-10	4,118	£2,119,715
Aug-10	3,886	£2,121,246
Sep-10	4,068	£2,148,586
Oct-10	3,903	£2,092,929
Nov-10	3,880	£2,116,365
Dec-10	3,238	£1,900,756
Jan-11	3,991	2,260,671
Feb-11	3,770	£2,199,321
Mar-11	4,068	£2,256,789

Figure 20: Volume and Value of Prison Law claims by month



Prison Law- Claims current financial year

There was a drop in volume (9%) and value (6%) in Mar 2011 compared to Mar 2010.

Figure 21: Volume and Value of Prison Law claims April 2010 to March 2011

Month	Volume	Volume Previous Year	% Change	Value	Value Previous Year	% Change
Apr-10	3770	3,716	1%	£2,095,980	£1,785,540	15%
May-10	4048	3,754	7%	£2,213,016	£1,824,676	18%
Jun-10	4,335	3,717	14%	£2,391,219	£2,002,501	16%
Jul-10	4,118	4,259	-3%	£ 2,119,715	£2,067,851	2%
AUG-10	3,886	3,987	-3%	£2,121,246	£2,044,932	4%
SEP-10	4,068	4,039	1%	£ 2,148,586	£2,111,627	2%
Oct-10	3,903	4,286	-10%	£2,092,929	£2,224,510	-6%
Nov-10	3,880	4,265	-10%	2,117,654	£2,334,847	-10%
Dec-10	3,238	3,527	-9%	1,900,756	£2,028,253	-7%
Jan-11	3,991	4113	-3%	2,260,671	£2,155,209	5%
Feb-11	3,770	3966	-5%	£2,199,321	£2,155,209	2%
Mar-11	4,068	4,419	-9%	£2,256,789	£2,394,053	-6%

Figure 22: Volume and Value of Prison Law claims April 2010 to March 2011



Prison Law by month and claim code

The table below provides the percentage breakdown by claim code of Prison Law claim volumes for the period February 2010 to March 2011.

In Mar 2011, 81% of the total Prison Law claim volumes consisted of Free standing advice and assistance claims, 11% Advocacy assistance at prison discipline hearings claims and 8% Advocacy assistance at parole board hearings.

Figure 23: Percentage breakdown of prison law claims volume by claim code

Submission Month	PRIA Free standing advice and assistance	PRIB Advocacy assistance at prison discipline hearings	PRIC Advocacy assistance at parole board hearings
Feb-10	80%	12%	7%
Mar-10	83%	10%	7%
Apr-10	82%	11%	7%
May-10	83%	10%	7%
Jun-10	83%	9%	8%
Jul-10	84%	10%	6%
Aug-10	83%	10%	7%
Sep-10	83%	10%	7%
Oct-10	84%	9%	7%
Nov-10	82%	10%	8%
Dec-10	80%	11%	9%
Jan-11	81%	11%	10%
Feb-11	82%	10%	9%
Mar-11	81%	11%	8%

Figure 24: Percentage breakdown of prison law claims volume by claim code

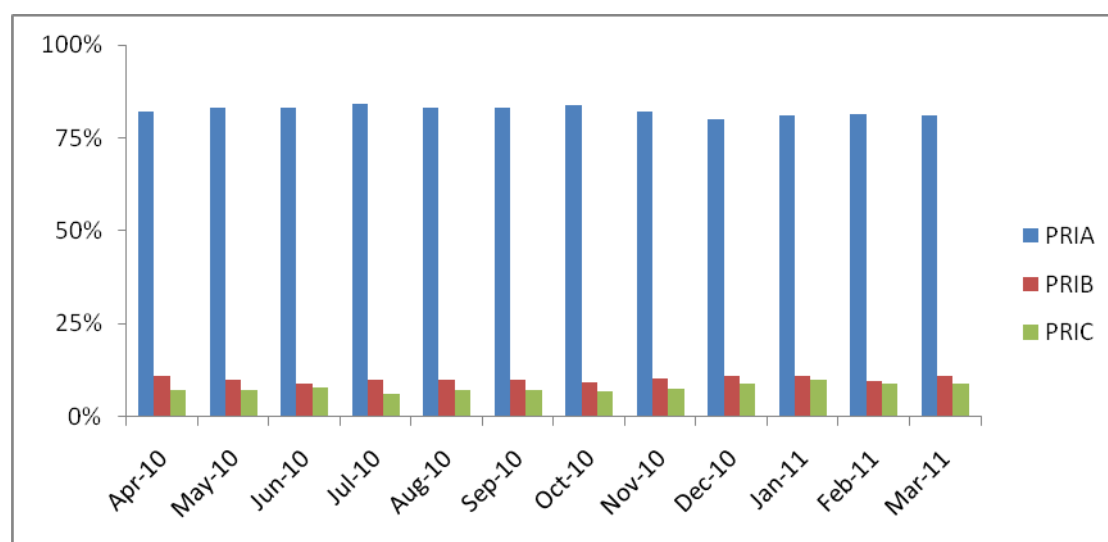
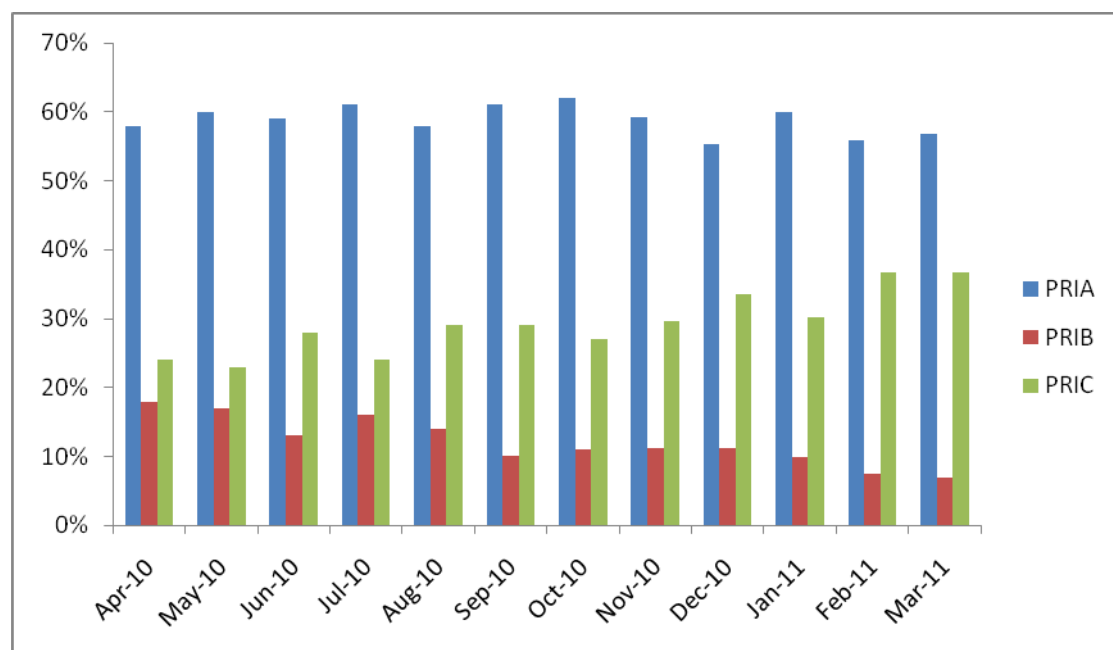


Figure 25: Percentage breakdown of prison law claims value by claim code

Submission Month	PRIA Free standing advice and assistance	PRIB Advocacy assistance at prison discipline hearings	PRIC Advocacy assistance at parole board hearings
Feb-10	58%	14%	28%
Mar-10	61%	14%	26%
Apr-10	58%	18%	24%
May-10	60%	17%	23%
Jun-10	59%	13%	28%
Jul-10	61%	16%	24%
Aug-10	58%	14%	29%
Sep-10	61%	10%	29%
Oct-10	62%	11%	27%
Nov-10	59%	11%	30%
Dec-10	55%	11%	34%
Jan-11	56%	10%	34%
Feb-11	56%	8%	37%
Mar-11	57%	7%	37%

Figure 26: Percentage breakdown of prison law claims value by claim code



Total lower crime

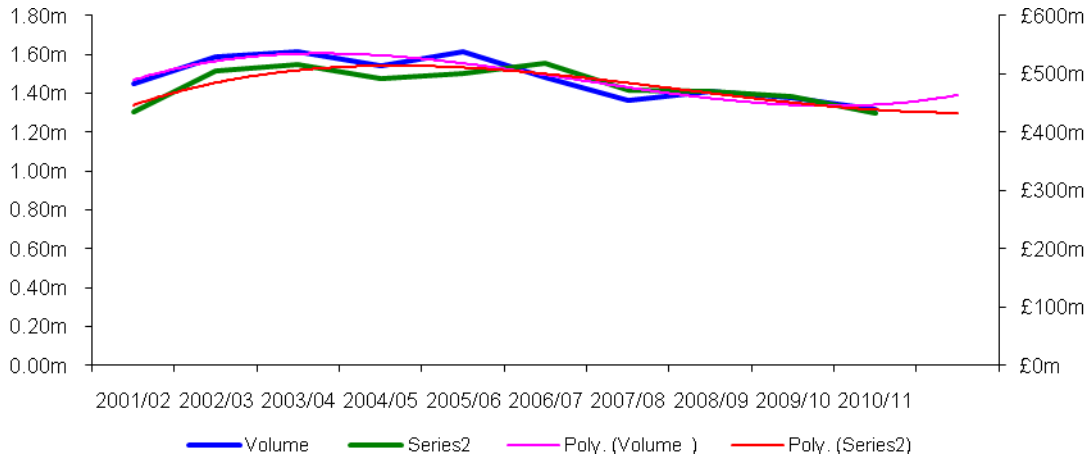
The table below provides a summary of total lower crime volume and value for the period 2006/07 to 2010/11. It's the cumulative total of Investigations, Proceedings and Prison Law claims which have been provided above. It also provides a year on year percentage change in the figures.

Total lower crime value dropped by 5% and value dropped by 6%.

Figure 27: Volume and Value of Lower Crime claims 2001/02 to 2010/11

Year	Lower Crime Claims Volume	% Change	Lower Crime Claims Value	% Change
2001/02	1,451,776		£ 433,762,785	
2002/03	1,590,185	10%	£ 505,330,827	16%
2003/04	1,617,205	2%	£ 515,845,372	2%
2004/05	1,539,304	-5%	£ 492,378,969	-5%
2005/06	1,616,508	5%	£ 500,653,760	2%
2006/07	1,485,147	-2%	£ 518,958,498	4%
2007/08	1,362,912	-8%	£ 472,285,036	-9%
2008/09	1,406,654	6%	£ 470,200,992	-0.44%
2009/10	1,379,461	-2%	£ 460,079,785	-2%
2010/11	1,315,856	-5%	£ 431,896,502	-6%

Figure 28: Volume and Value of Lower Crime claims 2001/02 to 2010/11



Crime Lower SMPs only

The table below provides a summary of lower crime SMP values for FY 2009/10 and for the period April 2010 to March 2011. The values do not include CDS Direct, DSCC & PDS payments.

Figure 29: Crime Lower SMPs

	Apr	May	Jun	Jul	Aug	Sep	Oct	Nov	Dec	Jan	Feb	Mar	Total
2010/11	39.2	39.4	39.6	38.9	38.5	38	38	37.3	37.4	36	35.2	38.3	£417.5m
2009/10	39.0	51.9	36.7	35.6	36.0	36.3	36.4	36.5	37.3	37.4	38.0	38.3	£460m

Investigations claims by scheme

The table below provides the breakdown of investigations claims volume and value by pricing police station scheme for the month of February 2011. The volume and value include all police station claim codes

Figure 30: Investigations claims for February 2011 by scheme

Pricing Scheme Description	Volume	Value	CJS Area
Abingdon, Didcot & Witney (South Oxfordshire)	111	£ 31,817	Thames Valley
Aldershot / Petersfield (North East Hampshire)	166	£ 44,652	Hampshire
Amman Valley	25	£ 6,232	Dyfed-Powys
Andover / Basingstoke / Winchester (NW Hants)	252	£ 69,022	Hampshire
Ashbourne / Matlock / High Peak (Buxton)	127	£ 32,732	Derbyshire
Ashby & Coalville / Loughborough / Melton Mowbray	189	£ 42,985	Leicestershire
Ashford & Tenterden / Dover / Folkestone	349	£ 102,417	Kent
Avon North & Thornbury	131	£ 31,304	Avon & Somerset
Aylesbury	188	£ 46,403	Thames Valley
Bangor & Caernarfon	83	£ 21,636	North Wales
Barking	210	£ 60,673	London
Barnsley	218	£ 44,831	South Yorkshire
Barnstaple	102	£ 22,407	Devon & Cornwall
Barrow In Furness	66	£ 14,248	Cumbria
Basildon	131	£ 28,839	Essex
Bath	149	£ 34,974	Avon & Somerset
Bedford	200	£ 45,795	Bedfordshire
Berwick & Alnwick	7	£ 1,808	Northumbria
Beverley / Bridlington	66	£ 15,922	Humberside
Bexley	207	£ 55,128	London
Bicester / North Oxon (Banbury)	94	£ 25,130	Thames Valley
Birmingham	1,557	£ 373,929	West Midlands
Bishop's Stortford / East Hertfordshire	208	£ 72,449	Hertfordshire
Bishopsgate	147	£ 43,578	London
Blackburn / Accrington / Ribble Valley	342	£ 81,488	Lancashire
Blackpool	365	£ 60,408	Lancashire
Bolton	248	£ 53,111	Greater Manchester
Bootle & Crosby	154	£ 33,923	Merseyside
Boston / Bourne / Stamford	188	£ 43,826	Lincolnshire
Bournemouth & Christchurch	259	£ 41,386	Avon & Somerset
Bradford	498	£ 93,270	West Yorkshire
Braintree	82	£ 22,990	Essex
Brecon & Radnor	30	£ 10,553	Dyfed-Powys
Brent	578	£ 162,331	London
Brentford	294	£ 84,266	London
Brentwood	50	£ 16,983	Essex
Bridport / West Dorset	177	£ 34,759	Avon & Somerset
Brighton & Hove & Lewes	382	£ 92,253	Sussex
Bristol	669	£ 131,051	Avon & Somerset
Bromley	283	£ 76,848	London
Burnley / Rossendale	400	£ 86,529	Lancashire
Bury	163	£ 35,829	Greater Manchester
Camberwell Green	420	£ 116,602	London
Cambridge	218	£ 48,381	Cambridgeshire
Canterbury / Thanet	236	£ 57,416	Kent

Pricing Scheme Description	Volume	Value	CJS Area
Cardiff	562	£ 136,876	South Wales
Carmarthen East Dyfed	38	£ 10,587	Dyfed-Powys
Carrick / Kerrier (Camborne) / Penwith	191	£ 46,712	Devon & Cornwall
Central London	1,324	£ 393,752	London
Chelmsford / Witham	106	£ 25,006	Essex
Cheltenham	165	£ 35,157	Wiltshire
Chester / Vale Royal (Northwich)	245	£ 51,646	Cheshire
Chesterfield	182	£ 43,370	Derbyshire
Chichester & District	155	£ 34,798	Sussex
Chippenham / Trowbridge	197	£ 48,810	Wiltshire
Chorley / Ormskirk / South Ribble & Leyland	233	£ 54,217	Lancashire
Clacton & Harwich / Colchester	223	£ 54,361	Essex
Clerkenwell/Hampstead	368	£ 102,182	London
Colwyn Bay	6	£ 1,516	North Wales
Corby (Kettering) / Wellingborough	237	£ 49,766	Northamptonshire
Coventry	287	£ 59,433	West Midlands
Crawley / Horsham	312	£ 95,574	Sussex
Crewe & Nantwich / Sandbach & Congleton / Macclesfield	291	£ 71,404	Cheshire
Cromer & North Walsham	22	£ 4,724	Hertfordshire
Croydon	403	£ 112,672	London
Cynon Valley	3	£ 706	South Wales
Dacorum (Hemel Hempstead)	129	£ 35,972	Hertfordshire
Darlington	96	£ 20,749	Durham
Dartford & Gravesend	258	£ 80,429	Kent
Denbighshire	194	£ 49,706	North Wales
Derby / Swadlincote	510	£ 121,217	Derbyshire
Dereham	4	£ 1,123	Hertfordshire
Derwentside	79	£ 18,250	Durham
Dewsbury	151	£ 31,651	West Yorkshire
Diss / Thetford	46	£ 10,984	Hertfordshire
Dolgellau	4	£ 1,123	North Wales
Doncaster	323	£ 65,822	South Yorkshire
Dudley & Halesowen	192	£ 44,221	West Midlands
Durham	126	£ 30,117	Durham
Ealing	373	£ 109,836	London
Easington	90	£ 19,352	Durham
East Cornwall	196	£ 54,930	Devon & Cornwall
East Derbyshire (Ripley) / Ilkeston	122	£ 34,097	Derbyshire
East Gwent	18	£ 4,274	Gwent
Eastbourne	260	£ 60,817	Sussex
Ely	7	£ 1,536	Cambridgeshire
Enfield	322	£ 91,912	London
Epsom	3	£ 890	Surrey
Exeter	238	£ 48,570	Devon & Cornwall
Felixstowe / Ipswich & District / Woodbridge	227	£ 50,826	Suffolk
Fleetwood	14	£ 2,552	Lancashire
Gateshead	196	£ 37,723	Northumbria
Gloucester	162	£ 33,668	Wiltshire
Goole	48	£ 12,126	North Yorkshire
Gosport & Fareham	115	£ 31,100	Hampshire
Grantham & Sleaford	75	£ 17,210	Lincolnshire
Grays	146	£ 44,409	Essex
Great Yarmouth	151	£ 33,938	Hertfordshire
Greenwich/Woolwich	768	£ 210,837	London
Grimsby & Cleethorpes	245	£ 41,903	Humberside
Guildford & Farnham	156	£ 37,721	Surrey

Pricing Scheme Description	Volume	Value	CJS Area
Halifax	227	£ 52,019	West Yorkshire
Haringey	354	£ 100,663	London
Harlow & Loughton	213	£ 66,209	Essex
Harrogate & Ripon	96	£ 22,144	North Yorkshire
Harrow	202	£ 58,931	London
Hartlepool	188	£ 30,672	Cleveland
Hastings	186	£ 35,717	Sussex
Havering	238	£ 63,989	London
Heathrow	47	£ 16,586	London
Hendon/Barnet	328	£ 91,584	London
Hereford / Leominster	135	£ 28,384	West Mercia
High Wycombe & Amersham	201	£ 51,535	Thames Valley
Highbury Corner	365	£ 107,590	London
Hinckley / Market Harborough	1	£ 36	Leicestershire
Huddersfield	273	£ 54,788	West Yorkshire
Hull	577	£ 108,419	Humberside
Huntingdon	129	£ 28,656	Cambridgeshire
Isle of Wight	125	£ 28,312	Hampshire
Keighley & Bingley	138	£ 28,515	West Yorkshire
Kendal & Windermere	43	£ 10,522	Cumbria
Kidderminster / Redditch	248	£ 65,655	West Mercia
Kings Lynn & West Norfolk	140	£ 30,292	Hertfordshire
Kingston-Upon-Thames	145	£ 42,179	London
Knowsley	139	£ 31,322	Merseyside
Lancaster	194	£ 42,196	Lancashire
Leamington / Nuneaton / Rugby	301	£ 71,673	Warwickshire
Leeds	1,222	£ 234,944	West Yorkshire
Leicester	731	£ 168,677	Leicestershire
Lichfield & Tamworth / Burton Upon Trent / Uttoxeter	251	£ 57,524	Staffordshire
Lincoln / Gainsborough	239	£ 51,405	Lincolnshire
Liverpool	685	£ 157,824	Merseyside
Llanelli	83	£ 16,539	Dyfed-Powys
Lower Rhymney Valley / North Bedwellty / South Bedwellty	222	£ 63,204	Gwent
Lowestoft / Beccles & Halesworth / Aldeburgh	102	£ 22,948	Suffolk
Luton	471	£ 110,374	Bedfordshire
Maidstone & West Malling	151	£ 43,247	Kent
Manchester	927	£ 226,087	Greater Manchester
Mansfield	215	£ 46,988	Nottinghamshire
March & Wisbech	86	£ 20,803	Cambridgeshire
Medway	244	£ 64,695	Kent
Mendip & South Somerset	140	£ 38,592	Avon & Somerset
Merthyr Tydfil	119	£ 27,605	South Wales
Mid Glamorgan & Miskin	168	£ 41,172	South Wales
Mid Wales	37	£ 8,552	Dyfed-Powys
Milton Keynes	350	£ 75,873	Thames Valley
Mold & Hawarden	94	£ 22,627	North Wales
Neath	101	£ 25,354	South Wales
Newark	79	£ 19,975	Nottinghamshire
Newcastle & Ogmere	106	£ 26,644	South Wales
Newcastle upon Tyne	457	£ 83,697	Northumbria
Newham	443	£ 126,405	London
Newport	312	£ 70,010	Gwent
North Anglesey	41	£ 10,774	North Wales
North Ceredigion / South Ceredigion	90	£ 25,134	Dyfed-Powys

Pricing Scheme Description	Volume	Value	CJS Area
North Tyneside	244	£ 46,179	Northumbria
North West Surrey (Woking)	116	£ 30,244	Surrey
Northallerton & Richmond	73	£ 18,724	North Yorkshire
Northampton	387	£ 85,485	Northamptonshire
Norwich & District	312	£ 68,997	Hertfordshire
Nottingham	761	£ 181,231	Nottinghamshire
Old Street	338	£ 95,541	London
Oldham	299	£ 55,179	Greater Manchester
Oxford	203	£ 53,125	Thames Valley
Pembrokeshire	139	£ 30,528	Dyfed-Powys
Penrith / Carlisle	127	£ 27,973	Cumbria
Peterborough	287	£ 54,482	Cambridgeshire
Plymouth	528	£ 126,454	Devon & Cornwall
Pontefract & Castleford	191	£ 37,185	West Yorkshire
Poole East Dorset	134	£ 23,801	Avon & Somerset
Port Talbot	3	£ 964	South Wales
Portsmouth / Waterlooville (South East Hampshire)	418	£ 96,772	Hampshire
Preston	310	£ 58,935	Lancashire
Pwllheli	2	£ 351	North Wales
Rayleigh / Southend On Sea	281	£ 62,010	Essex
Reading	351	£ 88,808	Thames Valley
Redbridge	313	£ 91,058	London
Richmond-Upon-Thames	104	£ 31,539	London
Rochdale / Middleton	192	£ 43,947	Greater Manchester
Rotherham	188	£ 39,865	South Yorkshire
Salford	307	£ 72,715	Greater Manchester
Salisbury	95	£ 21,511	Wiltshire
Sandwell	329	£ 78,811	West Midlands
Scarborough / Whitby	97	£ 14,398	North Yorkshire
Scunthorpe	168	£ 30,444	Humberside
Sedgemore / Taunton Dane	226	£ 54,071	Avon & Somerset
Sheffield	493	£ 110,138	South Yorkshire
Shrewsbury	183	£ 41,434	West Mercia
Skegness	74	£ 17,336	Lincolnshire
Skipton, Settle & Ingleton	34	£ 7,601	North Yorkshire
Slough (East Berkshire)	479	£ 132,292	Thames Valley
Solihull	183	£ 46,391	West Midlands
South Durham	141	£ 29,678	Durham
South East Northumberland	175	£ 36,239	Northumbria
South East Surrey	171	£ 47,440	Surrey
South London	306	£ 88,224	London
South Tyneside	214	£ 37,748	Northumbria
South West Hants (Southampton)	517	£ 134,220	Hampshire
Southport	71	£ 12,421	Merseyside
St Albans	310	£ 89,817	Hertfordshire
St Helens	156	£ 32,265	Merseyside
Stafford / Cannock & Rugeley	221	£ 52,258	Staffordshire
Staines	164	£ 52,679	Surrey
Stansted	24	£ 9,207	Essex
Stevenage & North Hertfordshire	199	£ 63,956	Hertfordshire
Stockport	276	£ 60,803	Greater Manchester
Stoke on Trent / Leek	622	£ 147,891	Staffordshire

Pricing Scheme Description	Volume	Value	CJS Area
Stroud	72	£ 18,276	Wiltshire
Sudbury & Hadleigh / Bury St Edmunds / Haverhill / Newmarket	165	£ 38,359	Suffolk
Sunderland / Houghton Le Spring	414	£ 84,376	Northumbria
Sutton	184	£ 52,831	London
Swale	122	£ 40,015	Kent
Swansea	264	£ 61,510	South Wales
Swindon	215	£ 48,730	Wiltshire
Tameside	256	£ 51,876	Greater Manchester
Teeside	618	£ 110,167	Cleveland
Teignbridge / Torbay	229	£ 49,078	Devon & Cornwall
Telford	190	£ 46,060	West Mercia
Thames	418	£ 116,869	London
Tower Bridge	531	£ 158,119	London
Trafford	154	£ 36,150	Greater Manchester
Tynedale & Hexham	7	£ 1,583	Northumbria
Uxbridge	390	£ 106,958	London
Vale of Glamorgan	70	£ 20,138	South Wales
Wakefield	72	£ 13,921	West Yorkshire
Walsall	325	£ 78,333	West Midlands
Waltham Forest	300	£ 81,112	London
Warrington / Halton	311	£ 62,729	Cheshire
Watford	61	£ 16,889	Hertfordshire
West Berkshire (Newbury Etc)	107	£ 26,034	Thames Valley
West Kent (Tonbridge)	184	£ 50,684	Kent
West London	314	£ 94,132	London
Weston-Super-Mare	137	£ 33,786	Avon & Somerset
Whitehaven / Workington	144	£ 27,493	Cumbria
Wigan	259	£ 56,928	Greater Manchester
Wimbledon	168	£ 46,181	London
Wirral	273	£ 55,983	Merseyside
Wolverhampton & Seisdon	288	£ 68,977	West Midlands
Worcester	242	£ 59,242	West Mercia
Worksop & East Retford	84	£ 18,999	Nottinghamshire
Worthing	239	£ 50,854	Sussex
Wrexham	185	£ 39,561	North Wales
York / Selby	259	£ 56,572	North Yorkshire
Undefined	724	£ 111,081	N/A
Total	57,523	£ 13,796,182	

Crime Higher Volume and Value Figures Report

	Apr 07-Mar 08	Apr 08-Mar 09	Apr 09-Mar 10		Apr - Jun 2010	Jul - Sep 2010	Oct - Dec 2010	Jan - Mar 2011	12 month total		Apr - Jun 2011
Non-VHCC											
CREST case starts*	81,942	91,450	98,311		24,866	24,554	22,771	8,050	80,241		
Litigator graduated fee expenditure (£)		78,383	266,296,000		70,199,000	88,619,336	76,025,508	70,225,454	305,069,298		68,019
Litigator graduated fee bill volume (volume profit costs)		155,895	135,660		34,407	40,122	34,150	30,517	139,196		27
Advocate graduated fee expenditure (Court&NTT)(£)		274,564,000	284,126,000		73,008,301	73,482,818	63,642,418	64,015,588	276,809,702		0
Advocate graduated fee expenditure (in house)(£)								2,660,577			23,307
Advocate graduated fee bill volume (volume profit costs)		155,895	134,936		134,339				134,339		11
*these are trials only, does not include appeals or committals											
VHCC											
Number of contracts signed	397	385	405		93	71	39	58	261		1
Total spend in period on live VHCCs (£)	128,448,859	109,305,654	87,693,841		23,783,867	24,146,249	24,785,286	19,571,875	92,287,276		830,591