

**TFF Replacement – Cost Ranges**

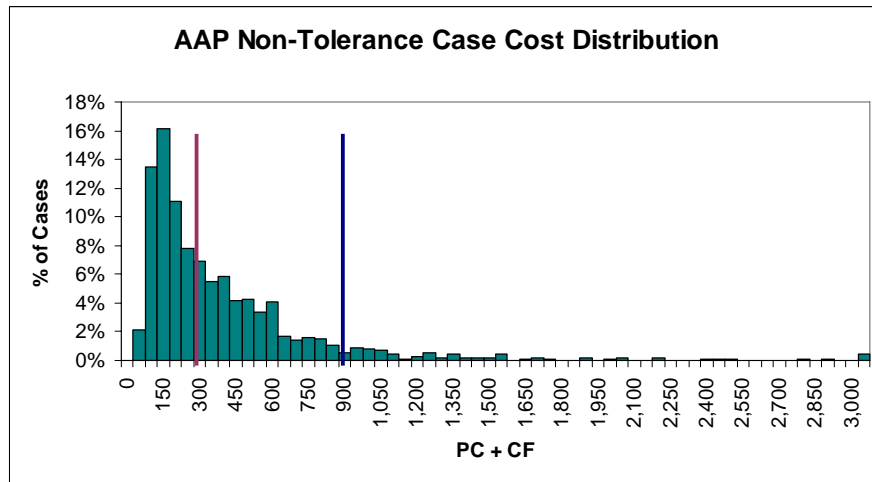
This document represents graphically where the fees and exceptional thresholds lie within the cost distributions for each category.

On each of the diagrams below the following key is used:

- : Fixed Fee
- : Exceptional Threshold

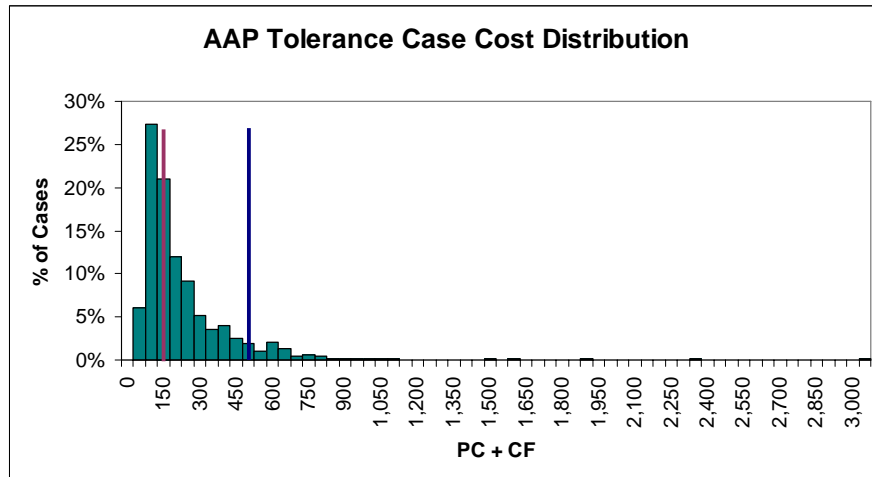
**AAP**

**Non-Tolerance**



<b>% of Cases Below</b>	
Fee	58.34%
Exceptional Threshold	93.02%

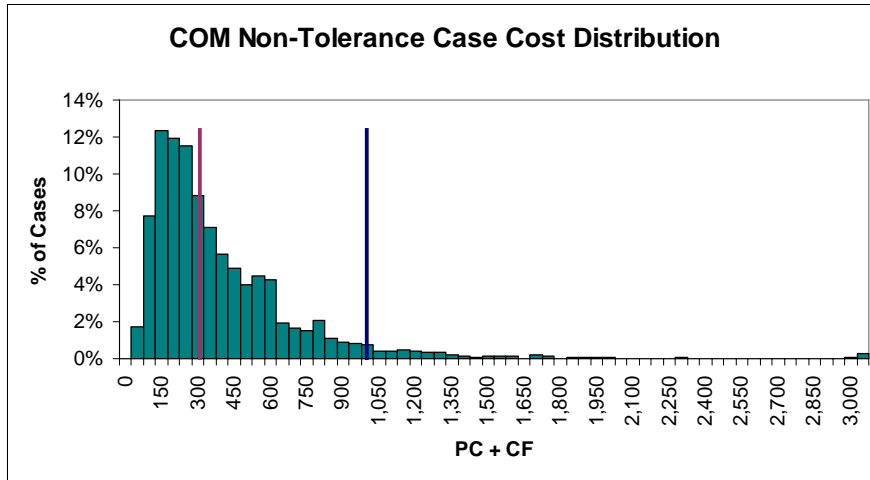
**Tolerance**



<b>% of Cases Below</b>	
Fee	60.49%
Exceptional Threshold	93.41%

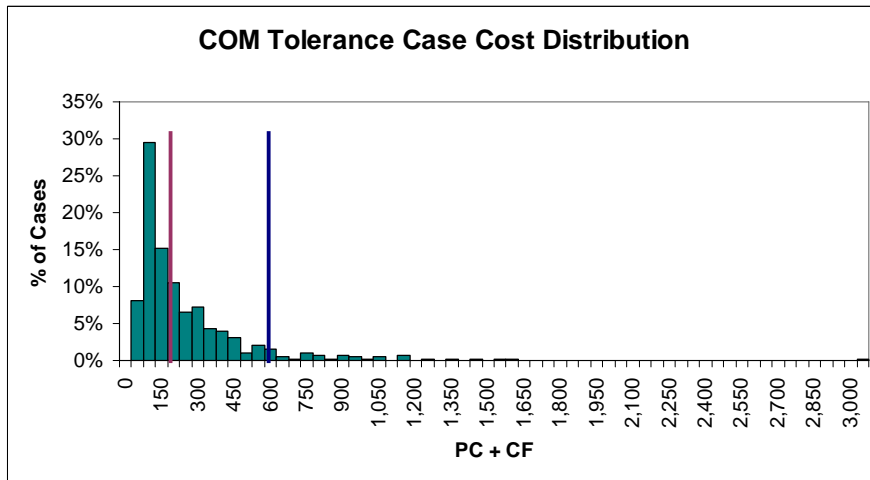
**COM**

**Non-Tolerance**



	<b>% of Cases Below</b>
Fee	60.25%
Exceptional Threshold	95.34%

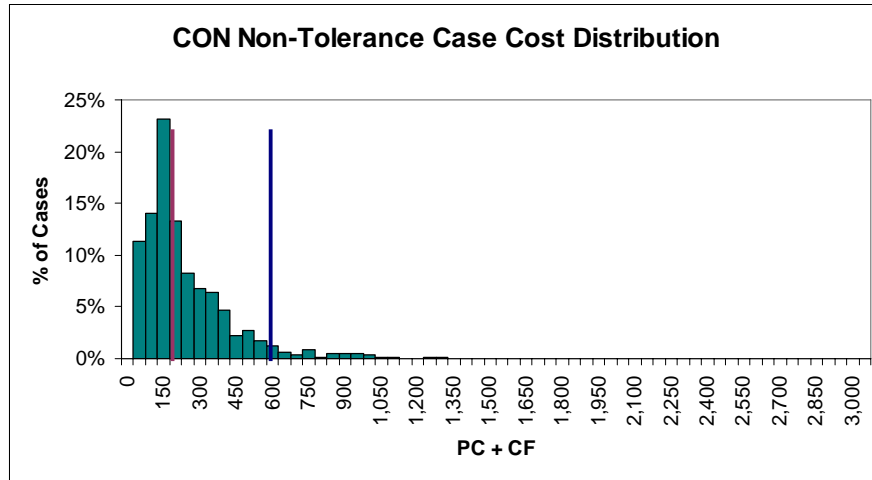
**Tolerance**



	<b>% of Cases Below</b>
Fee	63.73%
Exceptional Threshold	93.20%

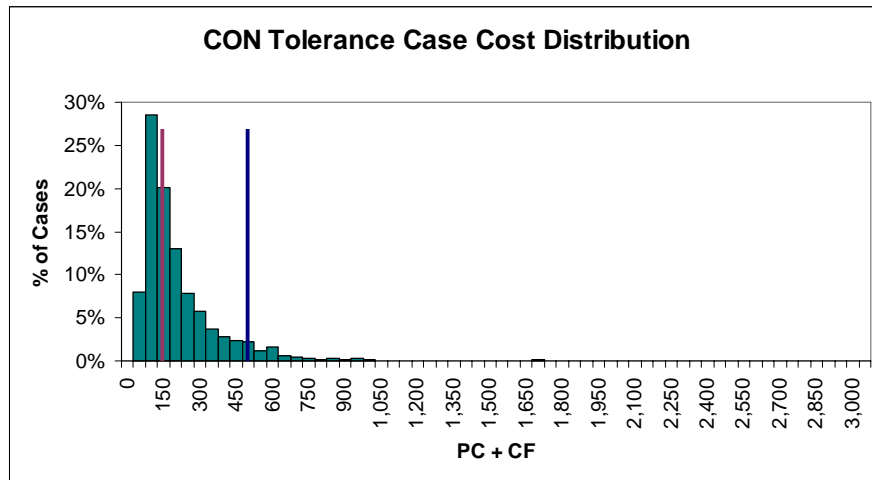
**CON**

**Non-Tolerance**



	<b>% of Cases Below</b>
Fee	62.95%
Exceptional Threshold	95.80%

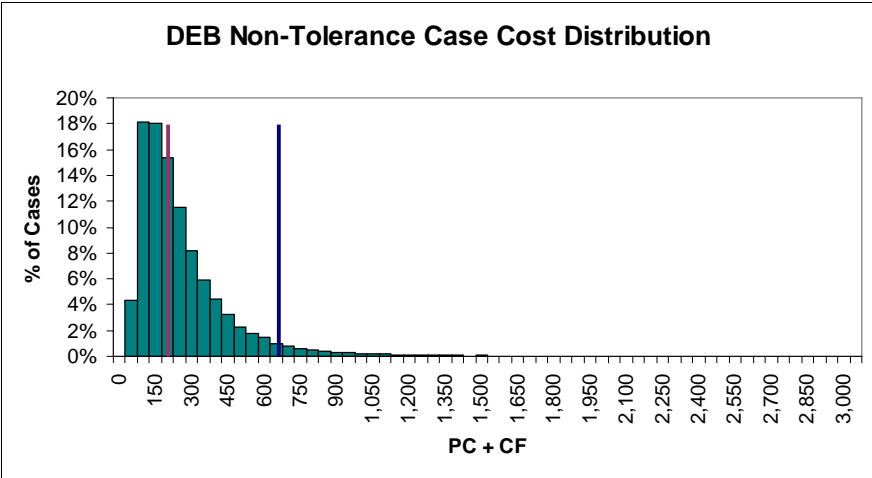
**Tolerance**



	<b>% of Cases Below</b>
Fee	62.89%
Exceptional Threshold	94.76%

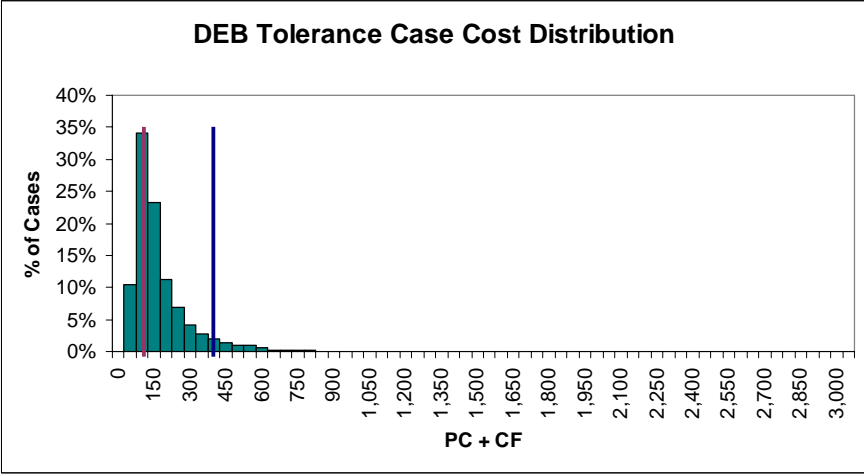
**DEB**

**Non-Tolerance**



<b>% of Cases Below</b>	
Fee	63.24%
Exceptional Threshold	96.21%

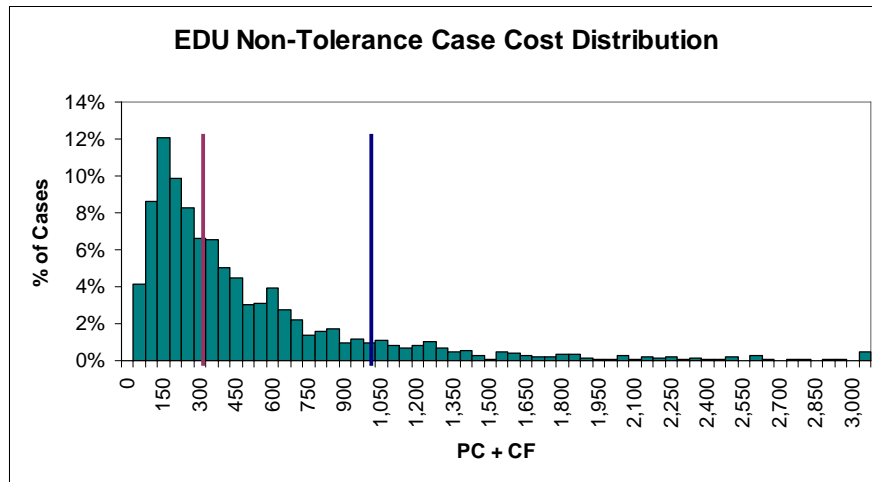
**Tolerance**



<b>% of Cases Below</b>	
Fee	65.50%
Exceptional Threshold	95.89%

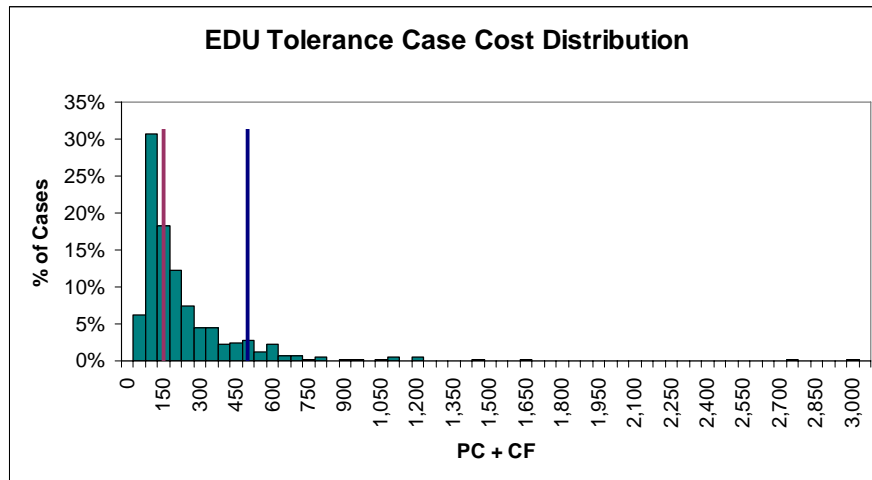
**EDU**

**Non-Tolerance**



<b>% of Cases Below</b>	
Fee	56.12%
Exceptional Threshold	89.34%

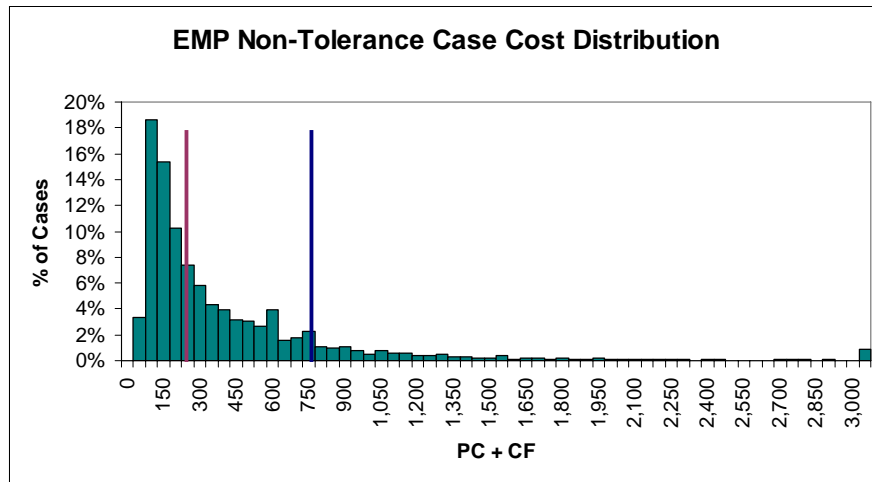
**Tolerance**



<b>% of Cases Below</b>	
Fee	63.25%
Exceptional Threshold	92.25%

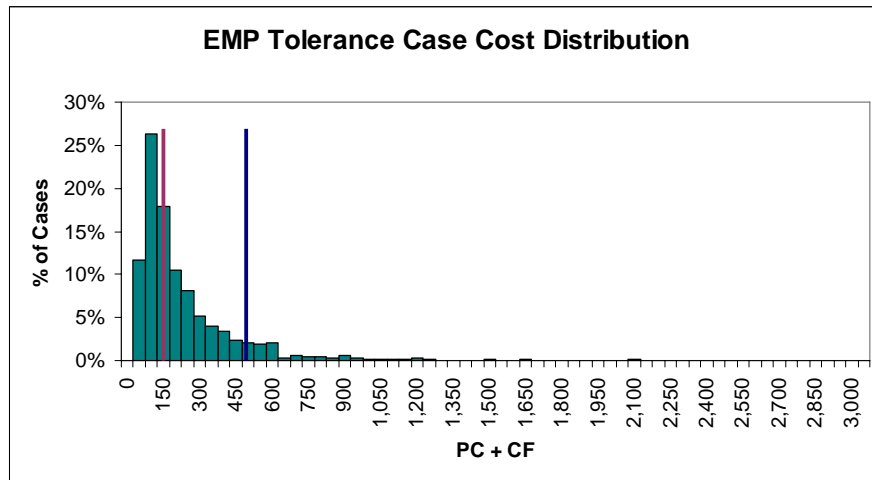
**EMP**

**Non-Tolerance**



<b>% of Cases Below</b>	
Fee	56.64%
Exceptional Threshold	88.33%

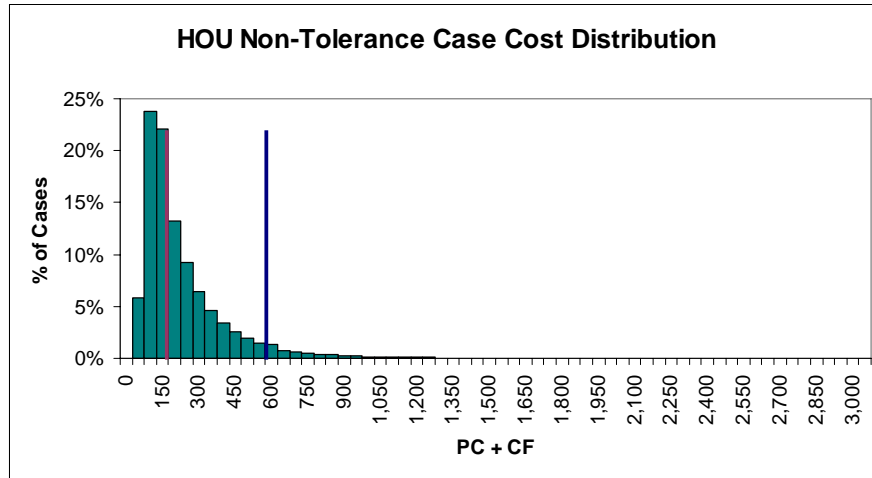
**Tolerance**



<b>% of Cases Below</b>	
Fee	60.98%
Exceptional Threshold	91.92%

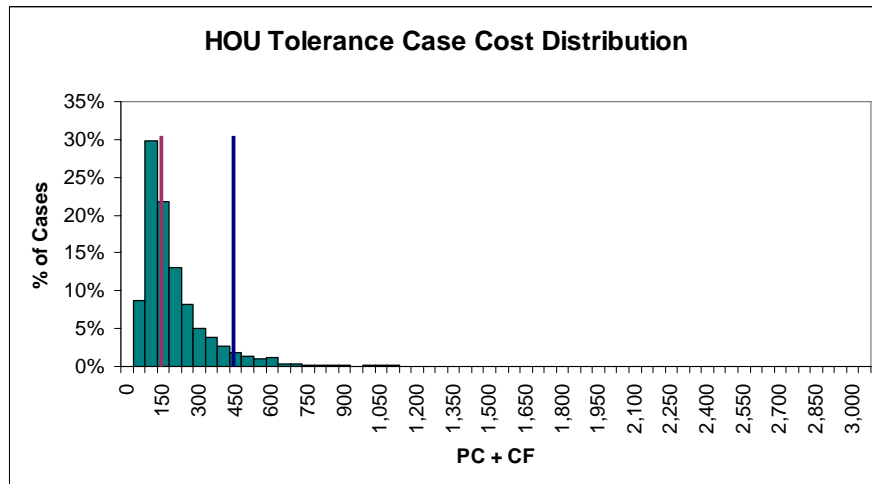
HOU

Non-Tolerance



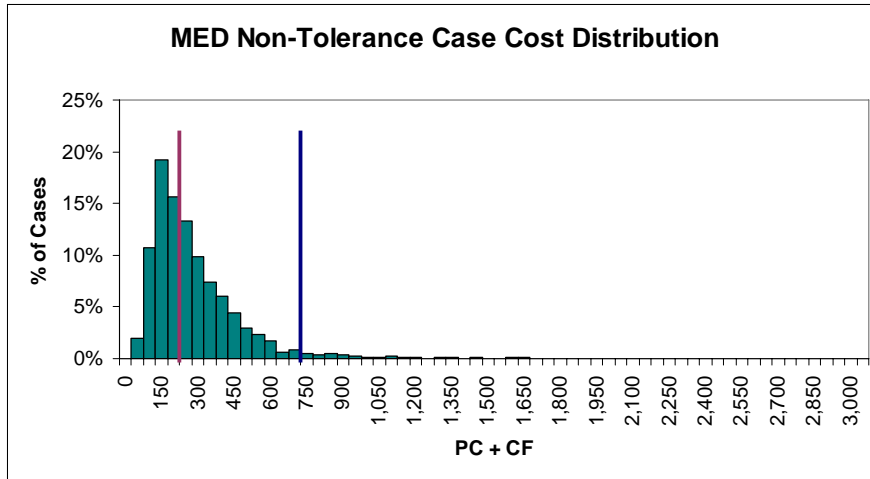
<b>% of Cases Below</b>	
Fee	65.15%
Exceptional Threshold	95.83%

Tolerance



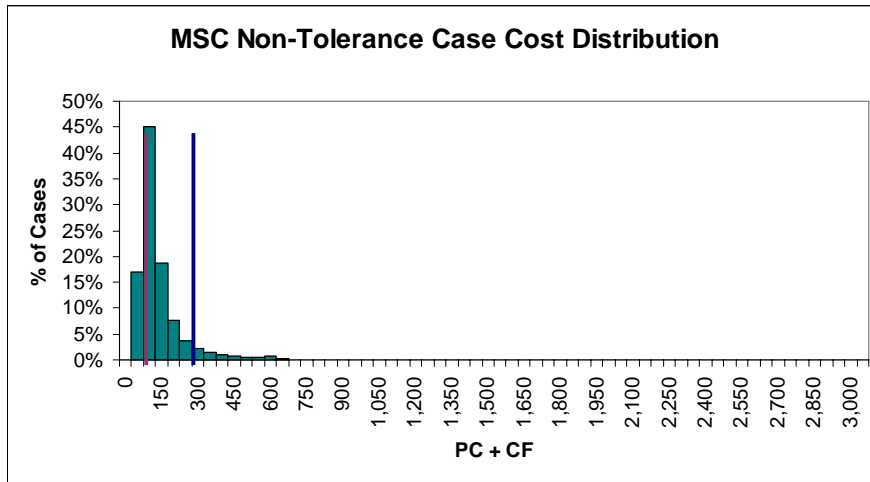
<b>% of Cases Below</b>	
Fee	63.28%
Exceptional Threshold	95.61%

**MED**



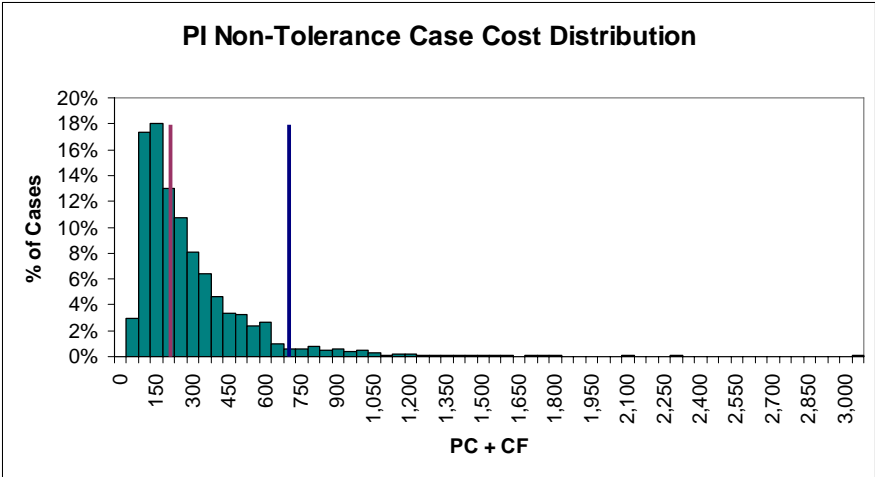
<b>% of Cases Below</b>	
Fee	61.03%
Exceptional Threshold	97.37%

**MSC**



<b>% of Cases Below</b>	
Fee	62.68%
Exceptional Threshold	94.59%

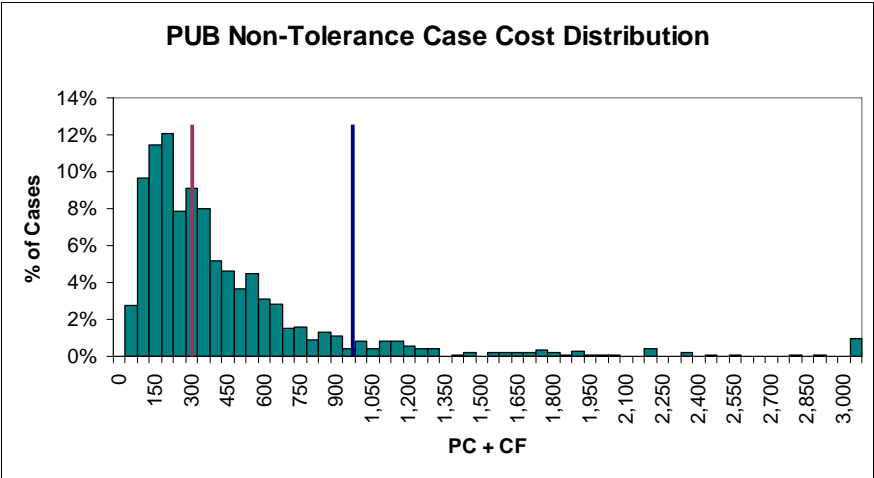
PI



	<b>% of Cases Below</b>
Fee	59.68%
Exceptional Threshold	94.69%

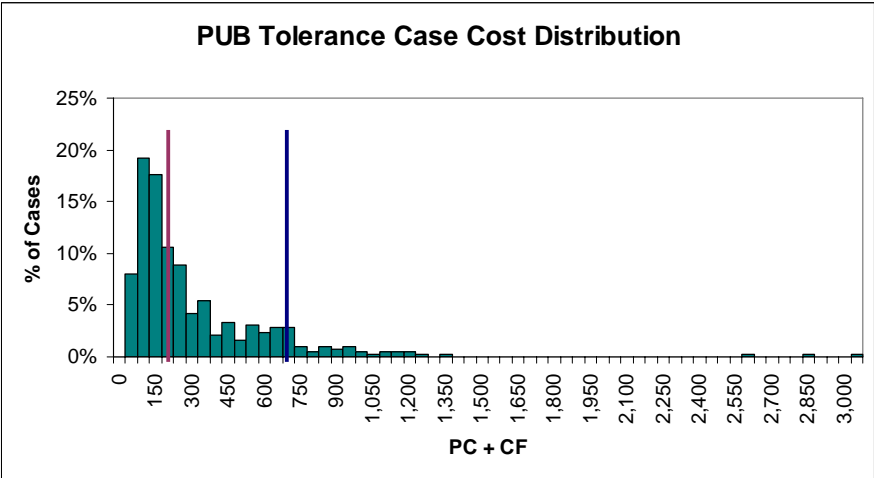
**PUB**

**Non-Tolerance**



	<b>% of Cases Below</b>
Fee	57.81%
Exceptional Threshold	92.33%

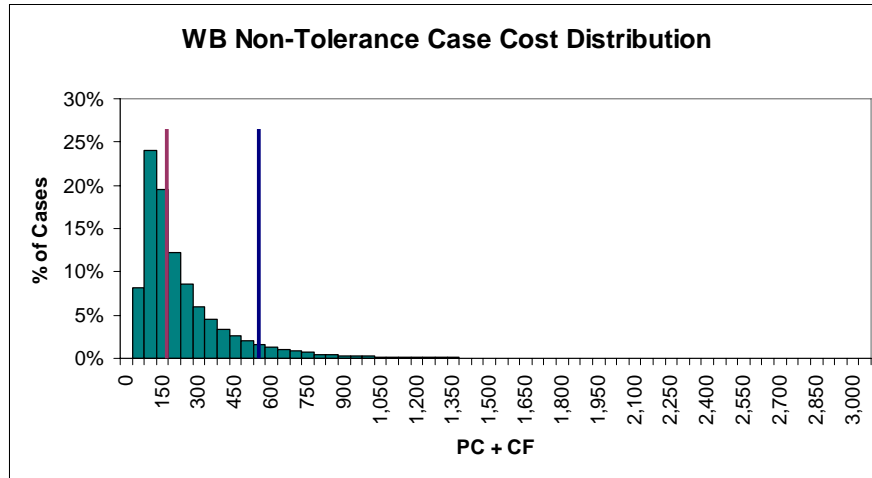
**Tolerance**



	<b>% of Cases Below</b>
Fee	62.95%
Exceptional Threshold	92.23%

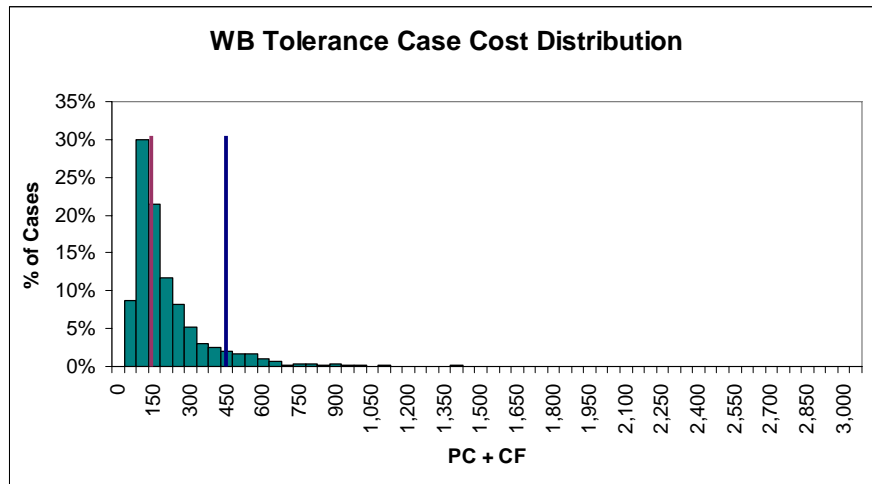
**WB**

**Non-Tolerance**



<b>% of Cases Below</b>	
Fee	62.48%
Exceptional Threshold	93.53%

**Tolerance**



<b>% of Cases Below</b>	
Fee	62.11%
Exceptional Threshold	93.76%

